



[Go to Product page](#)

Datasheet for ABIN6139112
anti-CSN2 antibody (AA 1-100)

1 Image

Overview

Quantity:	100 µL
Target:	CSN2
Binding Specificity:	AA 1-100
Reactivity:	Human
Host:	Rabbit
Clonality:	Polyclonal
Conjugate:	This CSN2 antibody is un-conjugated
Application:	Western Blotting (WB)

Product Details

Immunogen:	A synthetic peptide corresponding to a sequence within amino acids 1-100 of human CSN2 (NP_001882.1).
Sequence:	MKVLILACLV ALALARETIE SLSSSEESIT EYKQKVEKVK HEDQQQGEDE HQDKIYPSFQ PQPLIYPFVE PIPYGFLPQN ILPLAQPAVV LPVPQPEIME
Isotype:	IgG
Cross-Reactivity:	Human
Characteristics:	Polyclonal Antibodies
Purification:	Affinity purification

Target Details

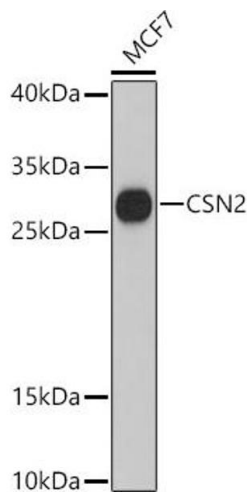
Target:	CSN2
Alternative Name:	CSN2 (CSN2 Products)
Background:	This gene is a member of the beta casein family. There are two types of casein protein, beta (encoded by this gene) and kappa, both of which are secreted in human milk. Beta casein is the principal protein in human milk and the primary source of essential amino acids for a suckling infant. Beta and kappa casein proteins acting together form spherical micelles which bind within them important dietary minerals, such as calcium and phosphorous. Alternative splicing results in multiple transcript variants.,CSN2,CASB,Cancer,Signal Transduction,Endocrine & Metabolism,CSN2
Molecular Weight:	25 kDa
Gene ID:	1447
UniProt:	P05814

Application Details

Application Notes:	WB,1:500 - 1:2000
Comment:	HIGH QUALITY
Restrictions:	For Research Use only

Handling

Format:	Liquid
Buffer:	PBS with 0.02 % sodium azide,50 % glycerol, pH 7.3.
Preservative:	Sodium azide
Precaution of Use:	This product contains Sodium azide: a POISONOUS AND HAZARDOUS SUBSTANCE which should be handled by trained staff only.
Storage:	-20 °C
Storage Comment:	Store at -20°C. Avoid freeze / thaw cycles.



Western Blotting

Image 1. Western blot analysis of extracts of MCF7 cells, using CSN2 antibody (ABIN6133604, ABIN6139112, ABIN6139113 and ABIN6216490) at 1:3000 dilution. Secondary antibody: HRP Goat Anti-Rabbit IgG (H+L) (ABIN1684268 and ABIN3020597) at 1:10000 dilution. Lysates/proteins: 25 µg per lane. Blocking buffer: 3 % nonfat dry milk in TBST. Detection: ECL Basic Kit (RM00020). Exposure time: 90s.