



Datasheet for ABIN6139130
anti-CSPP1 antibody (AA 962-1221)



[Go to Product page](#)

1 Image

Overview

Quantity:	100 µL
Target:	CSPP1 (Cspp1)
Binding Specificity:	AA 962-1221
Reactivity:	Human
Host:	Rabbit
Clonality:	Polyclonal
Conjugate:	This CSPP1 antibody is un-conjugated
Application:	Western Blotting (WB)

Product Details

Immunogen:	Recombinant fusion protein containing a sequence corresponding to amino acids 962-1221 of human CSPP1 (NP_079066.5).
Sequence:	QSPKGLDAAT FQNVHDFNEL KDRDSETRVD LKFMYLDPFR DHHTLEIQQQ ALLREQQKRL NRIKMQEGAK VDLDAIPSAK VREQRMPRDD TSDFLKNSLL ESDSAFIGAY GETYPAIEDD VLPPPSQLPS ARERRRNKWK GLDIDSSRPN VAPDGLSLKS ISSVNVDELVRNEERMRL NEFHNPINT DDESSLVDPD DIMKHIGDDG SNSVATEPWL RPGTSETLKR FMAEQLNQE QQIPGKPGTF TWQGLSTAHG
Isotype:	IgG
Cross-Reactivity:	Human, Mouse
Characteristics:	Polyclonal Antibodies
Purification:	Affinity purification

Target Details

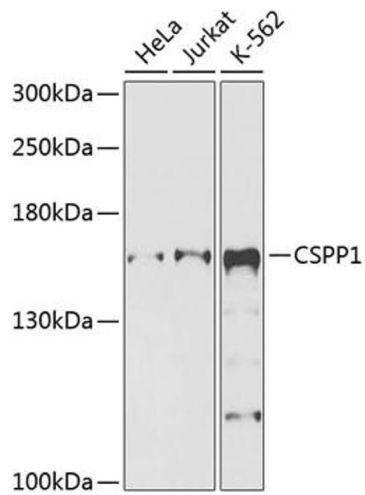
Target:	CSPP1 (Cspp1)
Alternative Name:	CSPP1 (Cspp1 Products)
Background:	This gene encodes a centrosome and spindle pole associated protein. The encoded protein plays a role in cell-cycle progression and spindle organization, regulates cytokinesis, interacts with Nephrocystin 8 and is required for cilia formation. Mutations in this gene result in primary cilia abnormalities and classical Joubert syndrome. Alternatively spliced transcript variants encoding distinct isoforms have been found for this gene.,CSPP1,CSPP,JBTS21,Cell Biology & Developmental Biology,Cell Cycle,Centrosome,CSPP1
Molecular Weight:	101 kDa/141 kDa/145 kDa
Gene ID:	79848
UniProt:	Q1MSJ5

Application Details

Application Notes:	WB,1:500 - 1:1000
Comment:	HIGH QUALITY
Restrictions:	For Research Use only

Handling

Format:	Liquid
Buffer:	PBS with 0.02 % sodium azide,50 % glycerol, pH 7.3.
Preservative:	Sodium azide
Precaution of Use:	This product contains Sodium azide: a POISONOUS AND HAZARDOUS SUBSTANCE which should be handled by trained staff only.
Storage:	-20 °C
Storage Comment:	Store at -20°C. Avoid freeze / thaw cycles.



Western Blotting

Image 1. Western blot analysis of extracts of various cell lines, using CSPP1 antibody (ABIN6132173, ABIN6139130, ABIN6139131 and ABIN6225331) at 1:1000 dilution. Secondary antibody: HRP Goat Anti-Rabbit IgG (H+L) (ABIN1684268 and ABIN3020597) at 1:10000 dilution. Lysates/proteins: 25 µg per lane. Blocking buffer: 3 % nonfat dry milk in TBST. Detection: ECL Basic Kit (RM00020). Exposure time: 90s.