

Datasheet for ABIN6139145
anti-CST1 antibody (AA 20-141)[Go to Product page](#)

1 Image

Overview

| | |
|----------------------|-------------------------------------|
| Quantity: | 100 µL |
| Target: | CST1 |
| Binding Specificity: | AA 20-141 |
| Reactivity: | Human |
| Host: | Rabbit |
| Clonality: | Polyclonal |
| Conjugate: | This CST1 antibody is un-conjugated |
| Application: | Western Blotting (WB) |

Product Details

| | |
|-------------------|--|
| Immunogen: | Recombinant fusion protein containing a sequence corresponding to amino acids 20-141 of human CST1 (NP_001889.2). |
| Sequence: | AWSPKEEDRI IPGGIYNADL NDEWVQRALH FAISEYNKAT KDDYYRRPLR VLRARQQTVG GVNYFFDVEV GRTICTKSQP NLDTCAFHEQ PELQKKQLCS FEIYEV PWEN RRSLVKSRCQ ES |
| Isotype: | IgG |
| Cross-Reactivity: | Human |
| Characteristics: | Polyclonal Antibodies |
| Purification: | Affinity purification |

Target Details

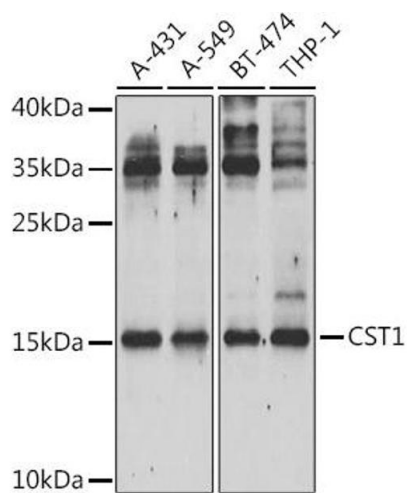
| | |
|-------------------|---|
| Target: | CST1 |
| Alternative Name: | CST1 (CST1 Products) |
| Background: | <p>The cystatin superfamily encompasses proteins that contain multiple cystatin-like sequences. Some of the members are active cysteine protease inhibitors, while others have lost or perhaps never acquired this inhibitory activity. There are three inhibitory families in the superfamily, including the type 1 cystatins (stefins), type 2 cystatins and the kininogens. The type 2 cystatin proteins are a class of cysteine proteinase inhibitors found in a variety of human fluids and secretions, where they appear to provide protective functions. The cystatin locus on chromosome 20 contains the majority of the type 2 cystatin genes and pseudogenes. This gene is located in the cystatin locus and encodes a cysteine proteinase inhibitor found in saliva, tears, urine, and seminal fluid.,CST1,Cell Biology & Developmental Biology,Ubiquitin,CST1</p> |
| Molecular Weight: | 16 kDa |
| Gene ID: | 1469 |
| UniProt: | P01037 |

Application Details

| | |
|--------------------|-----------------------|
| Application Notes: | WB,1:500 - 1:2000 |
| Comment: | HIGH QUALITY |
| Restrictions: | For Research Use only |

Handling

| | |
|--------------------|--|
| Format: | Liquid |
| Buffer: | PBS with 0.02 % sodium azide,50 % glycerol, pH 7.3. |
| Preservative: | Sodium azide |
| Precaution of Use: | This product contains Sodium azide: a POISONOUS AND HAZARDOUS SUBSTANCE which should be handled by trained staff only. |
| Storage: | -20 °C |
| Storage Comment: | Store at -20°C. Avoid freeze / thaw cycles. |



Western Blotting

Image 1. Western blot analysis of extracts of various cell lines, using CST1 Antibody (ABIN6133050, ABIN6139145, ABIN6139147 and ABIN6222245) at 1:1000 dilution. Secondary antibody: HRP Goat Anti-Rabbit IgG (H+L) (ABIN1684268 and ABIN3020597) at 1:10000 dilution. Lysates/proteins: 25 µg per lane. Blocking buffer: 3 % nonfat dry milk in TBST. Detection: ECL Basic Kit (RM00020). Exposure time: 30s.