



[Go to Product page](#)

Datasheet for ABIN6139172
anti-CTAG1B antibody (AA 1-180)

2 Images

Overview

Quantity:	100 µL
Target:	CTAG1B
Binding Specificity:	AA 1-180
Reactivity:	Human
Host:	Rabbit
Clonality:	Polyclonal
Conjugate:	This CTAG1B antibody is un-conjugated
Application:	Western Blotting (WB), Immunohistochemistry (IHC)

Product Details

Immunogen:	Recombinant fusion protein containing a sequence corresponding to amino acids 1-180 of human CTAG1B (NP_001318.1).
Sequence:	MQAEGRTGG STGDADGPGG PGIPDGPGGN AGGPGEAGAT GGRGPRGAGA ARASGPGGGA PRGPHGGAAS GLNGCCRCGA RGPE SRLLEF YLAMPFATPM EAELARRSLA QDAPPLVPG VLLKEFTVSG NILTIRLTAA DHRQLQLSIS SCLQQLSLLM WITQCFLPVF LAQPPSGQRR
Isotype:	IgG
Cross-Reactivity:	Human
Characteristics:	Polyclonal Antibodies
Purification:	Affinity purification

Target Details

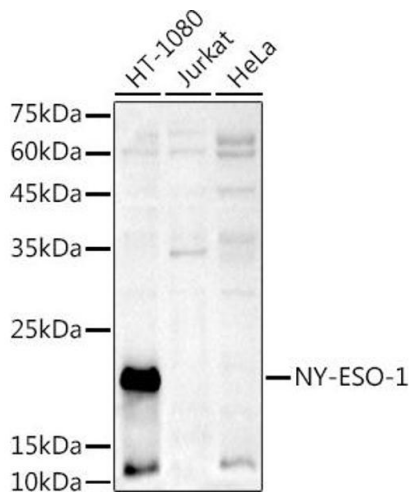
Target:	CTAG1B
Alternative Name:	CTAG1B (CTAG1B Products)
Background:	The protein encoded by this gene is an antigen that is overexpressed in many cancers but that is also expressed in normal testis. This gene is found in a duplicated region of the X-chromosome and therefore has a neighboring gene of identical sequence.,CTAG1B,CT6.1,CTAG,CTAG1,ESO1,LAGE-2,LAGE2B,NY-ESO-1,CTAG1B
Molecular Weight:	16 kDa/17 kDa
Gene ID:	1485
UniProt:	P78358

Application Details

Application Notes:	WB,1:500 - 1:2000,IHC,1:50 - 1:200
Restrictions:	For Research Use only

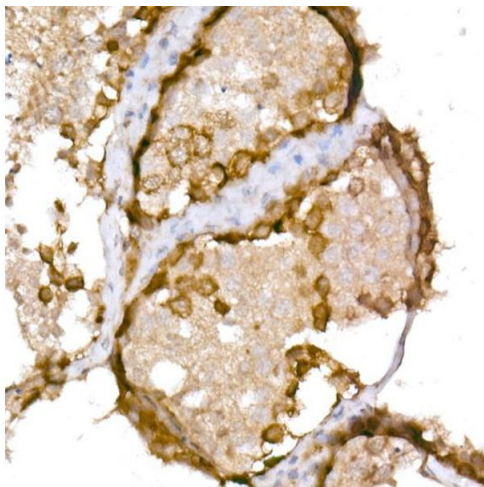
Handling

Format:	Liquid
Buffer:	PBS with 0.02 % sodium azide,50 % glycerol, pH 7.3.
Preservative:	Sodium azide
Precaution of Use:	This product contains Sodium azide: a POISONOUS AND HAZARDOUS SUBSTANCE which should be handled by trained staff only.
Storage:	-20 °C
Storage Comment:	Store at -20°C. Avoid freeze / thaw cycles.



Western Blotting

Image 1. Western blot analysis of extracts of various cell lines, using NY-ESO-1 antibody (ABIN6129965, ABIN6139172, ABIN6139173 and ABIN6225112) at 1:1000 dilution. Secondary antibody: HRP Goat Anti-Rabbit IgG (H+L) (ABIN1684268 and ABIN3020597) at 1:10000 dilution. Lysates/proteins: 25 µg per lane. Blocking buffer: 3 % nonfat dry milk in TBST. Detection: ECL Basic Kit (RM00020). Exposure time: 180s.



Immunohistochemistry

Image 2. Immunohistochemistry of paraffin-embedded human testis using NY-ESO-1 Rabbit pAb (ABIN6129965, ABIN6139172, ABIN6139173 and ABIN6225112) at dilution of 1:150 (40x lens). Perform high pressure antigen retrieval with 10 mM Tris/EDTA buffer pH 8.0 before commencing with IHC staining protocol.