



[Go to Product page](#)

Datasheet for ABIN6139210
anti-CTNNBIP1 antibody (AA 1-81)

1 Image

Overview

Quantity:	100 µL
Target:	CTNNBIP1
Binding Specificity:	AA 1-81
Reactivity:	Human
Host:	Rabbit
Clonality:	Polyclonal
Conjugate:	This CTNNBIP1 antibody is un-conjugated
Application:	Western Blotting (WB)

Product Details

Immunogen:	Recombinant fusion protein containing a sequence corresponding to amino acids 1-81 of human CTNNBIP1 (NP_064633.1).
Sequence:	MNREGAPGKS PEEMYIQQKV RVLLMLRKMG SNLTASEEEF LRTYAGVVNS QLSQLPPHSI DQGAEDVVMA FSRSETEDRR Q
Isotype:	IgG
Cross-Reactivity:	Human, Mouse
Characteristics:	Polyclonal Antibodies
Purification:	Affinity purification

Target Details

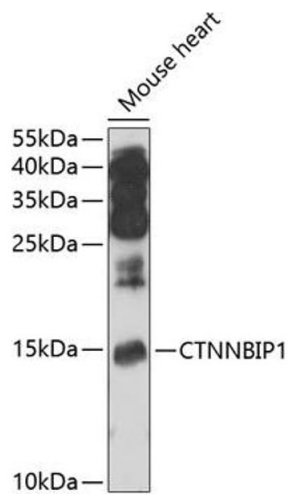
Target:	CTNNBIP1
Alternative Name:	CTNNBIP1 (CTNNBIP1 Products)
Background:	The protein encoded by this gene binds CTNNB1 and prevents interaction between CTNNB1 and TCF family members. The encoded protein is a negative regulator of the Wnt signaling pathway. Two transcript variants encoding the same protein have been found for this gene.,CTNNBIP1,ICAT,Cell Biology & Developmental Biology,Wnt/ β -Catenin Signaling Pathway,CTNNBIP1
Molecular Weight:	9 kDa
Gene ID:	56998
UniProt:	Q9NSA3

Application Details

Application Notes:	WB,1:500 - 1:2000
Restrictions:	For Research Use only

Handling

Format:	Liquid
Buffer:	PBS with 0.02 % sodium azide,50 % glycerol, pH 7.3.
Preservative:	Sodium azide
Precaution of Use:	This product contains Sodium azide: a POISONOUS AND HAZARDOUS SUBSTANCE which should be handled by trained staff only.
Storage:	-20 °C
Storage Comment:	Store at -20°C. Avoid freeze / thaw cycles.



Western Blotting

Image 1. Western blot analysis of extracts of mouse heart, using CTNNBIP1 antibody (ABIN6133483, ABIN6139210, ABIN6139211 and ABIN6222937) at 1:1000 dilution. Secondary antibody: HRP Goat Anti-Rabbit IgG (H+L) (ABIN1684268 and ABIN3020597) at 1:10000 dilution. Lysates/proteins: 25 µg per lane. Blocking buffer: 3 % nonfat dry milk in TBST. Detection: ECL Enhanced Kit (RM00021). Exposure time: 30s.