

Datasheet for ABIN6139225  
**anti-Cathepsin F antibody (AA 270-484)**



[Go to Product page](#)

2 Images

## Overview

Quantity:	100 µL
Target:	Cathepsin F (CTSF)
Binding Specificity:	AA 270-484
Reactivity:	Human
Host:	Rabbit
Clonality:	Polyclonal
Conjugate:	This Cathepsin F antibody is un-conjugated
Application:	Western Blotting (WB), Immunohistochemistry (IHC), Immunofluorescence (IF)

## Product Details

Immunogen:	Recombinant fusion protein containing a sequence corresponding to amino acids 270-484 of human CTSF (NP_003784.2).
Sequence:	LAPPEWDWRS KGAVTKVKDQ GMSGSCWAFS VTGNVEGQWF LNQGTLTSLT EQELLDCKM DKACMGGLPS NAYSAIKNLG GLETTDDYSY QGHMQSCNFS AEKAKVYIND SVELSQNEQK LAAWLAKRGP ISVAINAFGM QFYRHGISRP LRPLCSPWLI DHAVLLVGYG NRSDVPFWAI KNSWGTDWGE KGYYYLHRGS GACGVNTMAS SAVVD
Isotype:	IgG
Cross-Reactivity:	Human, Mouse
Characteristics:	Polyclonal Antibodies
Purification:	Affinity purification

## Target Details

Target:	Cathepsin F (CTSF)
Alternative Name:	CTSF ( <a href="#">CTSF Products</a> )
Background:	<p>Cathepsins are papain family cysteine proteinases that represent a major component of the lysosomal proteolytic system. Cathepsins generally contain a signal sequence, followed by a propeptide and then a catalytically active mature region. The very long (251 amino acid residues) proregion of the cathepsin F precursor contains a C-terminal domain similar to the pro-segment of cathepsin L-like enzymes, a 50-residue flexible linker peptide, and an N-terminal domain predicted to adopt a cystatin-like fold. The cathepsin F proregion is unique within the papain family cysteine proteases in that it contains this additional N-terminal segment predicted to share structural similarities with cysteine protease inhibitors of the cystatin superfamily. This cystatin-like domain contains some of the elements known to be important for inhibitory activity. CTSF encodes a predicted protein of 484 amino acids which contains a 19 residue signal peptide. Cathepsin F contains five potential N-glycosylation sites, and it may be targeted to the endosomal/lysosomal compartment via the mannose 6-phosphate receptor pathway. The cathepsin F gene is ubiquitously expressed, and it maps to chromosome 11q13, close to the gene encoding cathepsin W.,CTSF,CATSF,CLN13,Immunology &amp; Inflammation,Cell Intrinsic Innate Immunity Signaling Pathway,CTSF</p>
Molecular Weight:	53 kDa
Gene ID:	8722
UniProt:	<a href="#">Q9UBX1</a>

## Application Details

Application Notes:	WB,1:500 - 1:2000,IHC,1:50 - 1:100,IF,1:50 - 1:100
Restrictions:	For Research Use only

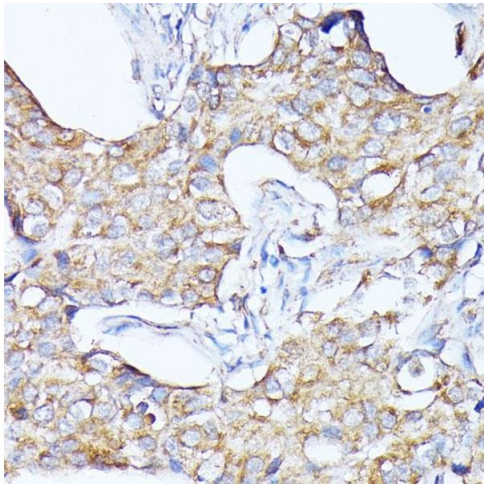
## Handling

Format:	Liquid
Buffer:	PBS with 0.02 % sodium azide,50 % glycerol, pH 7.3.
Preservative:	Sodium azide
Precaution of Use:	This product contains Sodium azide: a POISONOUS AND HAZARDOUS SUBSTANCE which should be handled by trained staff only.

Handling

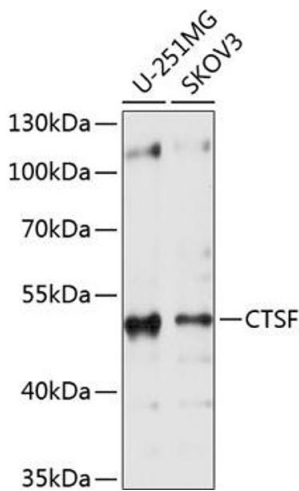
Storage:	-20 °C
Storage Comment:	Store at -20°C. Avoid freeze / thaw cycles.

Images



Immunohistochemistry

**Image 1.** Immunohistochemistry of paraffin-embedded human breast cancer using CTSF antibody (ABIN6127667, ABIN6139225, ABIN6139226 and ABIN6214736) at dilution of 1:100 (40x lens). Perform microwave antigen retrieval with 10 mM PBS buffer pH 7.2 before commencing with IHC staining protocol.



Western Blotting

**Image 2.** Western blot analysis of extracts of various cell lines, using CTSF antibody (ABIN6127667, ABIN6139225, ABIN6139226 and ABIN6214736) at 1:1000 dilution. Secondary antibody: HRP Goat Anti-Rabbit IgG (H+L) (ABIN1684268 and ABIN3020597) at 1:10000 dilution. Lysates/proteins: 25 µg per lane. Blocking buffer: 3 % nonfat dry milk in TBST. Detection: ECL Basic Kit (RM00020). Exposure time: 1s.