



Datasheet for ABIN6139228
anti-Cathepsin G antibody (AA 75-190)



[Go to Product page](#)

5 Images

Overview

Quantity:	100 µL
Target:	Cathepsin G (CTSG)
Binding Specificity:	AA 75-190
Reactivity:	Human
Host:	Rabbit
Clonality:	Polyclonal
Conjugate:	This Cathepsin G antibody is un-conjugated
Application:	Western Blotting (WB), Immunohistochemistry (IHC)

Product Details

Immunogen:	Recombinant fusion protein containing a sequence corresponding to amino acids 75-190 of human CTSG (NP_001902.1).
Sequence:	GAHNIQRREN TQQHITARRA IRHPQYNQRT IQNDIMLLQL SRRVRRNRNV NPVALPRAQE GLRPGTLCTV AGWGRVSMRR GTDTLREVQL RVQRDRQCLR IFGSYDPRRQ ICVGDR
Isotype:	IgG
Cross-Reactivity:	Human, Mouse, Rat
Characteristics:	Polyclonal Antibodies
Purification:	Affinity purification

Target Details

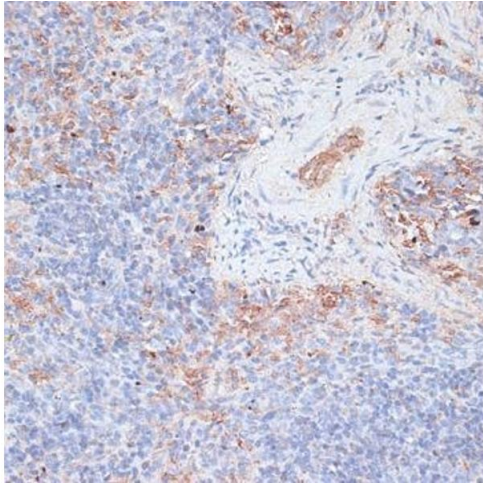
Target:	Cathepsin G (CTSG)
Alternative Name:	CTSG (CTSG Products)
Background:	<p>The protein encoded by this gene, a member of the peptidase S1 protein family, is found in azurophil granules of neutrophilic polymorphonuclear leukocytes. The encoded protease has a specificity similar to that of chymotrypsin C, and may participate in the killing and digestion of engulfed pathogens, and in connective tissue remodeling at sites of inflammation. In addition, the encoded protein is antimicrobial, with bacteriocidal activity against <i>S. aureus</i> and <i>N. gonorrhoeae</i>. Transcript variants utilizing alternative polyadenylation signals exist for this gene.</p> <p>CTSG,CATG,CG,Signal Transduction,Cell Biology & Developmental Biology,Cell Adhesion,Cytoskeleton,Extracellular Matrix,Neuroscience,CTSG</p>
Molecular Weight:	28 kDa
Gene ID:	1511
UniProt:	P08311
Pathways:	ACE Inhibitor Pathway , Peptide Hormone Metabolism , Regulation of Systemic Arterial Blood Pressure by Hormones

Application Details

Application Notes:	WB,1:500 - 1:2000,IHC,1:50 - 1:100
Comment:	HIGH QUALITY
Restrictions:	For Research Use only

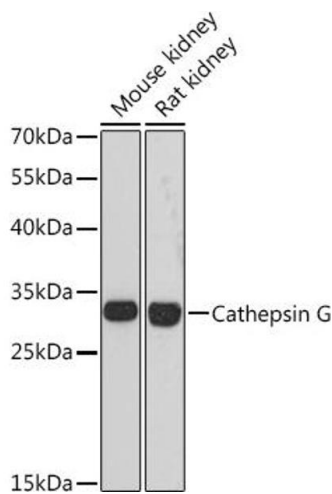
Handling

Format:	Liquid
Buffer:	PBS with 0.02 % sodium azide,50 % glycerol, pH 7.3.
Preservative:	Sodium azide
Precaution of Use:	This product contains Sodium azide: a POISONOUS AND HAZARDOUS SUBSTANCE which should be handled by trained staff only.
Storage:	-20 °C
Storage Comment:	Store at -20°C. Avoid freeze / thaw cycles.



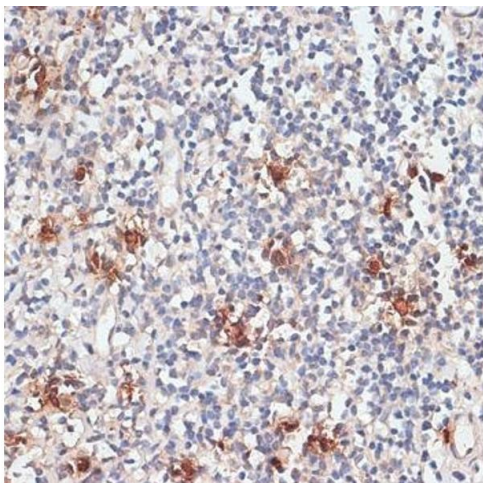
Immunohistochemistry

Image 1. Immunohistochemistry of paraffin-embedded mouse spleen using Cathepsin G antibody (ABIN6127686, ABIN6139228, ABIN6139230 and ABIN6217069) at dilution of 1:100 (40x lens). Perform microwave antigen retrieval with 10 mM PBS buffer pH 7.2 before commencing with IHC staining protocol.



Western Blotting

Image 2. Western blot analysis of extracts of various cell lines, using Cathepsin G antibody (ABIN6127686, ABIN6139228, ABIN6139230 and ABIN6217069) at 1:3000 dilution. Secondary antibody: HRP Goat Anti-Rabbit IgG (H+L) (ABIN1684268 and ABIN3020597) at 1:10000 dilution. Lysates/proteins: 25 µg per lane. Blocking buffer: 3 % nonfat dry milk in TBST. Detection: ECL Basic Kit (RM00020). Exposure time: 90s.



Immunohistochemistry

Image 3. Immunohistochemistry of paraffin-embedded human tonsil using Cathepsin G antibody (ABIN6127686, ABIN6139228, ABIN6139230 and ABIN6217069) at dilution of 1:100 (40x lens). Perform microwave antigen retrieval with 10 mM PBS buffer pH 7.2 before commencing with IHC staining protocol.

Please check the [product details page](#) for more images. Overall 5 images are available for ABIN6139228.