

Datasheet for ABIN6139232  
**anti-Cathepsin H antibody (AA 23-335)**[Go to Product page](#)

## 1 Image

## Overview

Quantity:	100 µL
Target:	Cathepsin H (CTSH)
Binding Specificity:	AA 23-335
Reactivity:	Human
Host:	Rabbit
Clonality:	Polyclonal
Conjugate:	This Cathepsin H antibody is un-conjugated
Application:	Western Blotting (WB)

## Product Details

Immunogen:	Recombinant fusion protein containing a sequence corresponding to amino acids 23-335 of human CTSH (NP_004381.2).
Sequence:	AELCVNSLEK FHFKSWMSKH RKTSTEEYH HRLQTFASNW RKINAHNNGN HTFKMALNQF SDMSFAEIKH KYLWSEPQNC SATKSNYLRG TGPYPSPVDW RKKGNFVSPV KNQGACGSCW TFSTTGALES AIAIATGKML SLAEQQLVDC AQDFNNHGCQ GGLPSQAFY ILYNKGIMGE DTYPYQGKDG YCKFQPGKAI GFVKDVANIT IYDEEAMVEA VALYNPVSFA FEVTQDFMMY RTGIYSSTSC HKTPDKVNHA VLAVGYGKGN GIPYWIVKNS WGPQWGMNGY FLIERGKNMC GLAACASYPI PLV
Isotype:	IgG
Cross-Reactivity:	Human, Mouse, Rat
Characteristics:	Polyclonal Antibodies

## Product Details

Purification: Affinity purification

## Target Details

Target: Cathepsin H (CTSH)

Alternative Name: CTSH ([CTSH Products](#))

Background: The protein encoded by this gene is a lysosomal cysteine proteinase important in the overall degradation of lysosomal proteins. It is composed of a dimer of disulfide-linked heavy and light chains, both produced from a single protein precursor. The encoded protein, which belongs to the peptidase C1 protein family, can act both as an aminopeptidase and as an endopeptidase. Increased expression of this gene has been correlated with malignant progression of prostate tumors. Alternate splicing of this gene results in multiple transcript variants encoding different isoforms.,CTSH,ACC-4,ACC-5,ACC4,ACC5,CPSB,Cell Biology & Developmental Biology,Cell Adhesion,Neuroscience,Neurodegenerative Diseases,Amyloid Plaque and Neurofibrillary Tangle Formation in Alzheimer's Disease,CTSH

Molecular Weight: 37 kDa

Gene ID: 1512

UniProt: [P09668](#)

Pathways: [Positive Regulation of Endopeptidase Activity](#)

## Application Details

Application Notes: WB,1:500 - 1:2000

Comment: HIGH QUALITY

Restrictions: For Research Use only

## Handling

Format: Liquid

Buffer: PBS with 0.02 % sodium azide,50 % glycerol, pH 7.3.

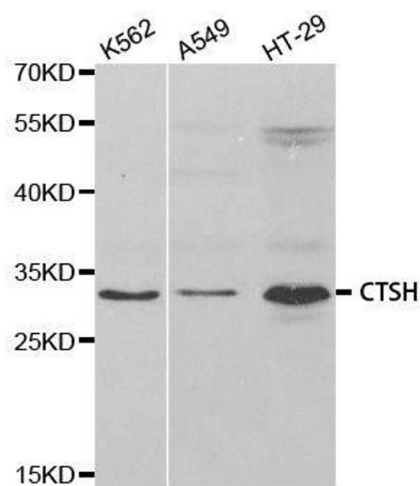
Preservative: Sodium azide

Precaution of Use: This product contains Sodium azide: a POISONOUS AND HAZARDOUS SUBSTANCE which should be handled by trained staff only.

Handling

Storage:	-20 °C
Storage Comment:	Store at -20°C. Avoid freeze / thaw cycles.

Images



Western Blotting

**Image 1.** Western blot analysis of extracts of various cell lines, using CTSH antibody.