

Datasheet for ABIN6139235
anti-Cathepsin L antibody (AA 114-333)

3 Images

[Go to Product page](#)

Overview

Quantity:	100 µL
Target:	Cathepsin L (CTSL1)
Binding Specificity:	AA 114-333
Reactivity:	Human
Host:	Rabbit
Clonality:	Polyclonal
Conjugate:	This Cathepsin L antibody is un-conjugated
Application:	Western Blotting (WB), Immunofluorescence (IF)

Product Details

Immunogen:	Recombinant fusion protein containing a sequence corresponding to amino acids 114-333 of human Cathepsin L/V/K/H (NP_001903.1).
Sequence:	APRSVDWREK GYVTPVKNQG QCGSCWAFSA TGALEGQMFR KTGRLLSLSE QNLVDCSGPQ GNEGCNGGLM DYAFQYVQDN GGLDSEESYP YEATEESCKY NPKYSVANDT GFVDIPKQEK ALMKAVATVG PISVAIDAGH ESFLFYKEGI YFEPDCSSED MDHGVLVVG Y GFESTESDNN KYWLKNSWG EEWGMGGYVK MAKDRRNHCG IASAASYPTV
Isotype:	IgG
Cross-Reactivity:	Human, Mouse, Rat
Characteristics:	Polyclonal Antibodies
Purification:	Affinity purification

Target Details

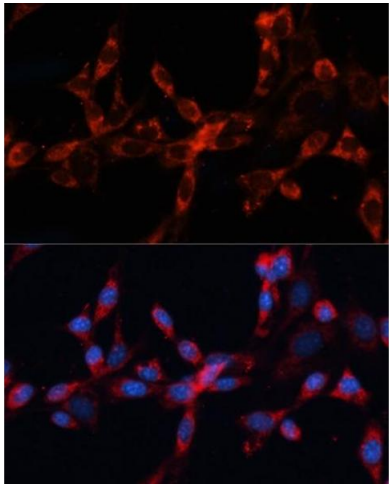
Target:	Cathepsin L (CTSL1)
Alternative Name:	CTSL (CTSL1 Products)
Background:	<p>The protein encoded by this gene is a lysosomal cysteine proteinase that plays a major role in intracellular protein catabolism. Its substrates include collagen and elastin, as well as alpha-1 protease inhibitor, a major controlling element of neutrophil elastase activity. The encoded protein has been implicated in several pathologic processes, including myofibril necrosis in myopathies and in myocardial ischemia, and in the renal tubular response to proteinuria. This protein, which is a member of the peptidase C1 family, is a dimer composed of disulfide-linked heavy and light chains, both produced from a single protein precursor. Multiple alternatively spliced transcript variants have been found for this gene.,CTSL,CATL,CTSL1,MEP,Signal Transduction,Cell Biology & Developmental Biology,Cell Adhesion,Cytoskeleton,Extracellular Matrix,Neuroscience,CTSL</p>
Molecular Weight:	37 kDa
Gene ID:	1514
UniProt:	P07711
Pathways:	Activation of Innate immune Response , Toll-Like Receptors Cascades

Application Details

Application Notes:	WB,1:500 - 1:2000,IF,1:50 - 1:200
Restrictions:	For Research Use only

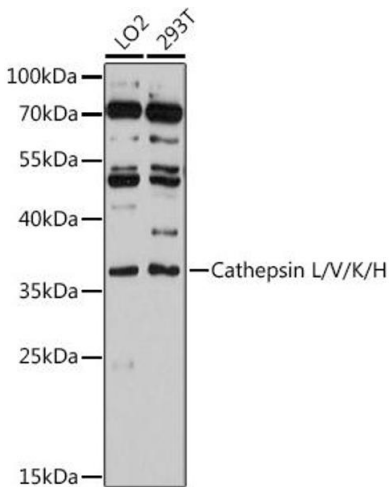
Handling

Format:	Liquid
Buffer:	PBS with 0.02 % sodium azide,50 % glycerol, pH 7.3.
Preservative:	Sodium azide
Precaution of Use:	This product contains Sodium azide: a POISONOUS AND HAZARDOUS SUBSTANCE which should be handled by trained staff only.
Storage:	-20 °C
Storage Comment:	Store at -20°C. Avoid freeze / thaw cycles.



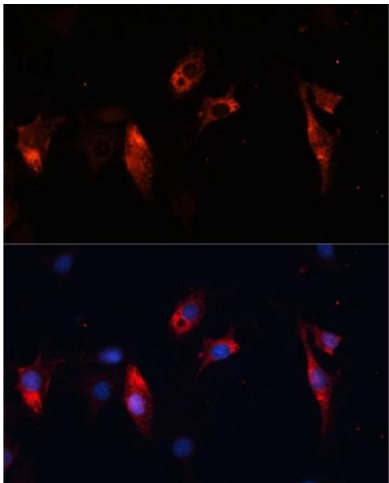
Immunofluorescence

Image 1. Immunofluorescence analysis of NIH/3T3 cells using Cathepsin L/V/K/H antibody (ABIN6127670, ABIN6139235, ABIN6139237 and ABIN6215636) at dilution of 1:100. Blue: DAPI for nuclear staining.



Western Blotting

Image 2. Western blot analysis of extracts of various cell lines, using Cathepsin L/V/K/H antibody (ABIN6127670, ABIN6139235, ABIN6139237 and ABIN6215636) at 1:3000 dilution. Secondary antibody: HRP Goat Anti-Rabbit IgG (H+L) (ABIN1684268 and ABIN3020597) at 1:10000 dilution. Lysates/proteins: 25 µg per lane. Blocking buffer: 3 % nonfat dry milk in TBST. Detection: ECL Basic Kit (RM00020). Exposure time: 90s.



Immunofluorescence

Image 3. Immunofluorescence analysis of C6 cells using Cathepsin L/V/K/H antibody (ABIN6127670, ABIN6139235, ABIN6139237 and ABIN6215636) at dilution of 1:100. Blue: DAPI for nuclear staining.