



[Go to Product page](#)

Datasheet for ABIN6139255  
**anti-Cullin 4B antibody (AA 1-200)**

6 Images

Overview

|                      |  |
|----------------------|--|
| Quantity:            | 100 µL   |
| Target:              | Cullin 4B (CUL4B)  |
| Binding Specificity: | AA 1-200   |
| Reactivity:          | Human  |
| Host:                | Rabbit   |
| Clonality:           | Polyclonal   |
| Conjugate:           | This Cullin 4B antibody is un-conjugated                                   |
| Application:         | Western Blotting (WB), Immunohistochemistry (IHC), Immunofluorescence (IF) |

Product Details

|                   |   |
|-------------------|---|
| Immunogen:        | Recombinant fusion protein containing a sequence corresponding to amino acids 1-200 of human CUL4B (NP_003579.3).   |
| Sequence:         | MMSQSSGSGD GNDDEATTSK DGGFSSPS AAAAAQEVRS ATDGNTSTTP PTSAKKRKLN<br>SSSSSSNSS NEREDFDSTS SSSSTPPLQP RDSASPSTSS FCLGVSAAS SHVPIQKCLR<br>FEDTLEFVGF DAKMAEESSS SSSSSSPTAA TSQQQLKNK SILISSVASV HHANGLAKSS<br>TTVSSFANSK PGSAKKLVIK |
| Isotype:          | IgG   |
| Cross-Reactivity: | Human, Mouse, Rat   |
| Characteristics:  | Polyclonal Antibodies   |
| Purification:     | Affinity purification   |

## Target Details

---

|                   |   |
|-------------------|---|
| Target:           | Cullin 4B (CUL4B)   |
| Alternative Name: | CUL4B ( <a href="#">CUL4B Products</a> )  |
| Background:       | This gene is a member of the cullin family. The encoded protein forms a complex that functions as an E3 ubiquitin ligase and catalyzes the polyubiquitination of specific protein substrates in the cell. The protein interacts with a ring finger protein, and is required for the proteolysis of several regulators of DNA replication including chromatin licensing and DNA replication factor 1 and cyclin E. Multiple transcript variants encoding different isoforms have been found for this gene.,CUL4B,CUL-4B,MRXHF2,MRXS15,MRXSC,SFM2,cullin-4B,Cell Biology & Developmental Biology,Ubiquitin,Ubiquitin-Proteasome Signaling Pathway,CUL4B |
| Molecular Weight: | 84 kDa/102 kDa/103 kDa  |
| Gene ID:          | 8450  |
| UniProt:          | <a href="#">Q13620</a>  |

## Application Details

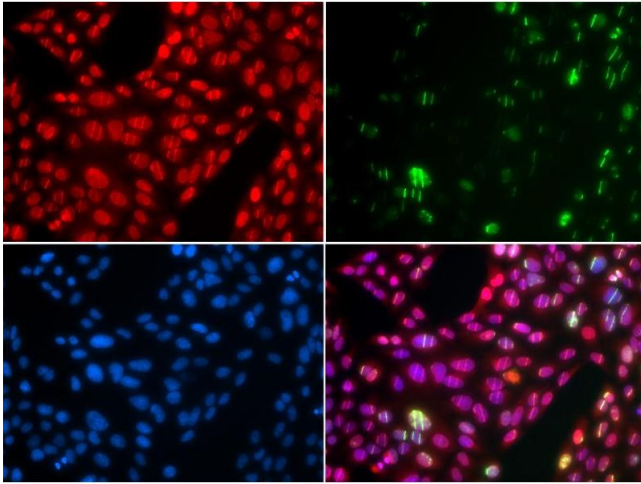
---

|                    |  |
|--------------------|--|
| Application Notes: | WB,1:500 - 1:2000,IHC,1:50 - 1:200,IF,1:50 - 1:200 |
| Restrictions:      | For Research Use only                              |

## Handling

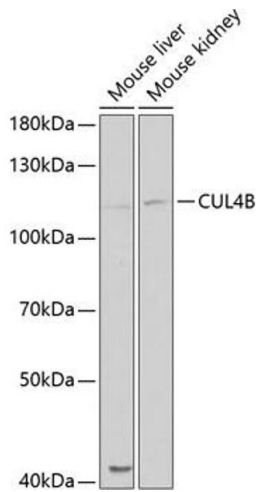
---

|                    |  |
|--------------------|--|
| Format:            | Liquid   |
| Buffer:            | PBS with 0.02 % sodium azide,50 % glycerol, pH 7.3.  |
| Preservative:      | Sodium azide   |
| Precaution of Use: | This product contains Sodium azide: a POISONOUS AND HAZARDOUS SUBSTANCE which should be handled by trained staff only. |
| Storage:           | -20 °C   |
| Storage Comment:   | Store at -20°C. Avoid freeze / thaw cycles.  |



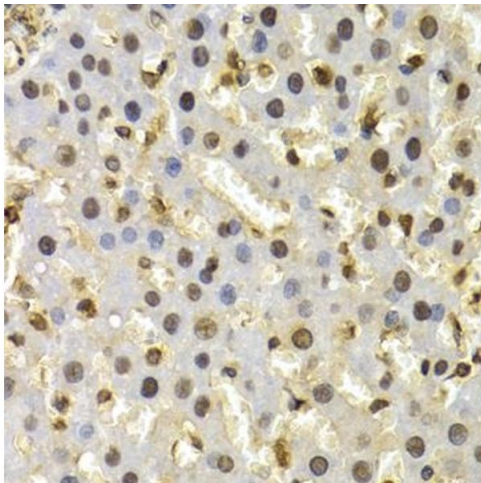
### Immunofluorescence

**Image 1.** Immunofluorescence analysis of U2OS cells using CUL4B antibody (ABIN6130211, ABIN6139255, ABIN6139258 and ABIN6221048). Blue: DAPI for nuclear staining. DNA damage by a UV-A laser.



### Western Blotting

**Image 2.** Western blot analysis of extracts of various cell lines, using CUL4B antibody (ABIN6130211, ABIN6139255, ABIN6139258 and ABIN6221048) at 1:1000 dilution. Secondary antibody: HRP Goat Anti-Rabbit IgG (H+L) (ABIN1684268 and ABIN3020597) at 1:10000 dilution. Lysates/proteins: 25 µg per lane. Blocking buffer: 3 % nonfat dry milk in TBST. Detection: ECL Basic Kit (RM00020). Exposure time: 60s.



### Immunohistochemistry

**Image 3.** Immunohistochemistry of paraffin-embedded rat liver using CUL4B antibody (ABIN6130211, ABIN6139255, ABIN6139258 and ABIN6221048) at dilution of 1:200 (40x lens). Perform microwave antigen retrieval with 10 mM PBS buffer pH 7.2 before commencing with IHC staining protocol.

Please check the [product details page](#) for more images. Overall 6 images are available for ABIN6139255.