

Datasheet for ABIN6139265
anti-CX3CL1 antibody (AA 365-397)



[Go to Product page](#)

6 Images

Overview

Quantity:	100 µL
Target:	CX3CL1
Binding Specificity:	AA 365-397
Reactivity:	Human
Host:	Rabbit
Clonality:	Polyclonal
Conjugate:	This CX3CL1 antibody is un-conjugated
Application:	Western Blotting (WB), Immunohistochemistry (IHC), Immunofluorescence (IF)

Product Details

Immunogen:	Recombinant fusion protein containing a sequence corresponding to amino acids 365-397aa of human CX3CL1 (NP_002987.1).
Isotype:	IgG
Cross-Reactivity:	Human, Mouse, Rat
Characteristics:	Polyclonal Antibodies
Purification:	Affinity purification

Target Details

Target:	CX3CL1
Alternative Name:	CX3CL1 (CX3CL1 Products)

Target Details

Background:	<p>This gene belongs to the CX3C subgroup of chemokines, characterized by the number of amino acids located between the conserved cysteine residues. This is the only member of the CX3C subgroup, which contains three amino acids between cysteine residues, resulting in a Cys-X-X-X-Cys configuration. The encoded protein contains an extended mucin-like stalk with a chemokine domain on top, and exists in both a membrane-anchored form where it acts as a binding molecule, or, in soluble form, as a chemotactic cytokine. The mature form of this protein can be cleaved at the cell surface, yielding different soluble forms that can interact with the G-protein coupled receptor, C-X3-C motif chemokine receptor 1 gene product. This gene plays a role in a wide range of diseases, including cancer, vasculitis, neuropathies, atherosclerosis, inflammatory diseases, and in human immunodeficiency virus infections.,CX3CL1,ABCD-3,C3Xkine,CXC3,CXC3C,NTN,NTT,SCYD1,fractalkine,Immunology & Inflammation,Cytokines,Cell Intrinsic Innate Immunity Signaling Pathway,Chemokines,Chemokine,Cardiovascular,CX3CL1</p>
-------------	--

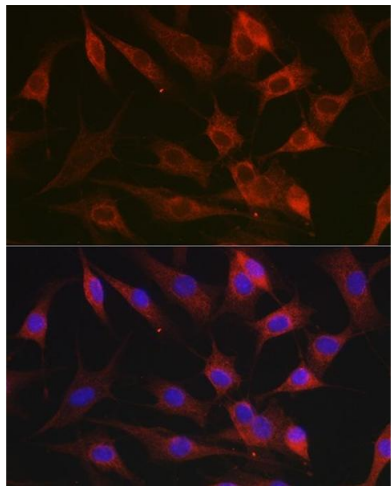
Molecular Weight:	42 kDa
Gene ID:	6376
UniProt:	P78423
Pathways:	Synaptic Membrane

Application Details

Application Notes:	WB,1:200 - 1:2000,IHC,1:50 - 1:200,IF,1:50 - 1:200
Restrictions:	For Research Use only

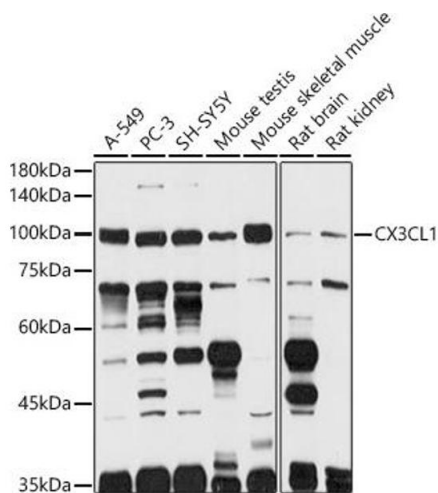
Handling

Format:	Liquid
Buffer:	PBS with 0.02 % sodium azide,50 % glycerol, pH 7.3.
Preservative:	Sodium azide
Precaution of Use:	This product contains Sodium azide: a POISONOUS AND HAZARDOUS SUBSTANCE which should be handled by trained staff only.
Storage:	-20 °C
Storage Comment:	Store at -20°C. Avoid freeze / thaw cycles.



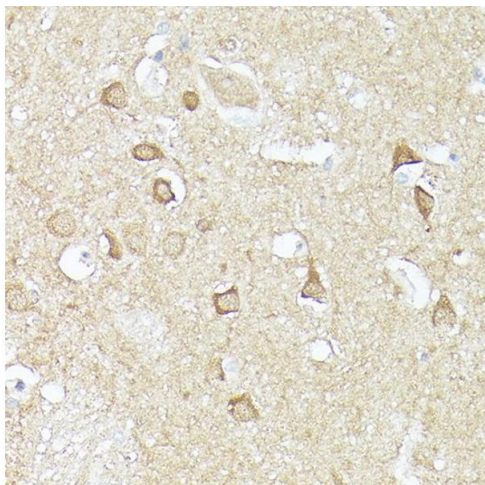
Immunofluorescence

Image 1. Immunofluorescence analysis of NIH-3T3 cells using CX3CL1 Rabbit pAb (ABIN6129035, ABIN6139265, ABIN6139266 and ABIN6218481) at dilution of 1:100 (40x lens). Blue: DAPI for nuclear staining.



Western Blotting

Image 2. Western blot analysis of extracts of various cell lines, using CX3CL1 antibody (ABIN6129035, ABIN6139265, ABIN6139266 and ABIN6218481) at 1:1000 dilution. Secondary antibody: HRP Goat Anti-Rabbit IgG (H+L) (ABIN1684268 and ABIN3020597) at 1:10000 dilution. Lysates/proteins: 25 µg per lane. Blocking buffer: 3 % nonfat dry milk in TBST. Detection: ECL Basic Kit (RM00020). Exposure time: 30s.



Immunohistochemistry

Image 3. Immunohistochemistry of paraffin-embedded human brain using CX3CL1 Rabbit pAb (ABIN6129035, ABIN6139265, ABIN6139266 and ABIN6218481) at dilution of 1:150 (40x lens). Perform high pressure antigen retrieval with 10 mM citrate buffer pH 6.0 before commencing with IHC staining protocol.

Please check the [product details page](#) for more images. Overall 6 images are available for ABIN6139265.