

Datasheet for ABIN6139339
anti-CYP2J2 antibody (AA 200-300)[Go to Product page](#)

1 Image

Overview

Quantity:	100 µL
Target:	CYP2J2
Binding Specificity:	AA 200-300
Reactivity:	Human
Host:	Rabbit
Clonality:	Polyclonal
Conjugate:	This CYP2J2 antibody is un-conjugated
Application:	Western Blotting (WB)

Product Details

Immunogen:	A synthetic peptide corresponding to a sequence within amino acids 200-300 of human CYP2J2 (NP_000766.2).
Sequence:	RFEYQDSWFQ QLLKLLDEVT YLEASKTCQL YNVFPWIMKF LPGPHQTLFS NWKKLKL FVS HMDKHKRKDW NPAETRDFID AYLKEMSKHT GNPTSSFHEE N
Isotype:	IgG
Cross-Reactivity:	Human, Mouse, Rat
Characteristics:	Polyclonal Antibodies
Purification:	Affinity purification

Target Details

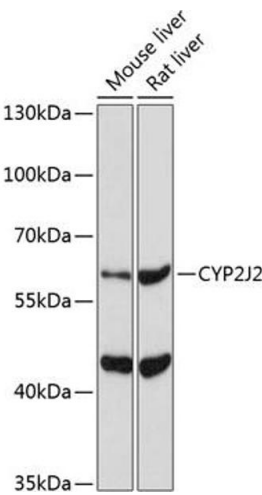
Target:	CYP2J2
Alternative Name:	CYP2J2 (CYP2J2 Products)
Background:	<p>This gene encodes a member of the cytochrome P450 superfamily of enzymes. The cytochrome P450 proteins are monooxygenases which catalyze many reactions involved in drug metabolism and synthesis of cholesterol, steroids and other lipids. This protein localizes to the endoplasmic reticulum and is thought to be the predominant enzyme responsible for epoxidation of endogenous arachidonic acid in cardiac tissue. Multiple transcript variants have been found for this gene.,CYP2J2,CPJ2,CYP11J2,Cancer,Signal Transduction,Endocrine & Metabolism,Mitochondrial metabolism,Cytochromes,Lipid Metabolism,Cytochromes,Lipases,Cardiovascular,Lipids,Fatty Acids,CYP2J2</p>
Molecular Weight:	57 kDa
Gene ID:	1573
UniProt:	P51589

Application Details

Application Notes:	WB,1:500 - 1:2000
Restrictions:	For Research Use only

Handling

Format:	Liquid
Buffer:	PBS with 0.02 % sodium azide,50 % glycerol, pH 7.3.
Preservative:	Sodium azide
Precaution of Use:	This product contains Sodium azide: a POISONOUS AND HAZARDOUS SUBSTANCE which should be handled by trained staff only.
Storage:	-20 °C
Storage Comment:	Store at -20°C. Avoid freeze / thaw cycles.



Western Blotting

Image 1. Western blot analysis of extracts of various cell lines, using CYP2J2 Antibody (ABIN6134306, ABIN6139339, ABIN6139340 and ABIN6221491) at 1:1000 dilution. Secondary antibody: HRP Goat Anti-Rabbit IgG (H+L) (ABIN1684268 and ABIN3020597) at 1:10000 dilution. Lysates/proteins: 25 µg per lane. Blocking buffer: 3 % nonfat dry milk in TBST. Detection: ECL Basic Kit (RM00020). Exposure time: 90s.