



[Go to Product page](#)

Datasheet for ABIN6139405  
**anti-DAPP1 antibody (AA 1-280)**

1 Image

Overview

Quantity:	100 µL
Target:	DAPP1
Binding Specificity:	AA 1-280
Reactivity:	Human
Host:	Rabbit
Clonality:	Polyclonal
Conjugate:	This DAPP1 antibody is un-conjugated
Application:	Western Blotting (WB), Immunofluorescence (IF)

Product Details

Immunogen:	Recombinant fusion protein containing a sequence corresponding to amino acids 1-280 of human DAPP1 (NP_055210.2).
Sequence:	MGRAELLEGK MSTQDPSDLW SRSDGEAELL QDLGWYHGNL TRHAAEALLL SNGCDGSYLL RDSNETTGLY SLSVRAKDSV KHFHVEYTG YSFKFGFNEFS SLKDFVKHFA NQPLIGSETG TLMVLKHPYP RKVEEPIYE SVRVHTAMQT GRTEDDLVP TAPSLGTKEGY LTKQGGLVKT WKTRWFTLHR NELKYFKDQM SPEPIRILD TECSAVQFDY SQERVNCFCL VFPFRTFYLC AKTGVEADEW IKILRWKLSQ IRKQLNQGEG TIRSRSFIK
Isotype:	IgG
Cross-Reactivity:	Human, Mouse, Rat
Characteristics:	Polyclonal Antibodies
Purification:	Affinity purification

## Target Details

---

Target:	DAPP1
Alternative Name:	DAPP1 ( <a href="#">DAPP1 Products</a> )
Background:	May act as a B-cell-associated adapter that regulates B-cell antigen receptor (BCR-signaling downstream of PI3K.,DAPP1,BAM32,Signal Transduction,Immunology & Inflammation,B Cell Receptor Signaling Pathway,DAPP1
Molecular Weight:	32 kDa
Gene ID:	27071
UniProt:	<a href="#">Q9UN19</a>
Pathways:	<a href="#">BCR Signaling</a>

## Application Details

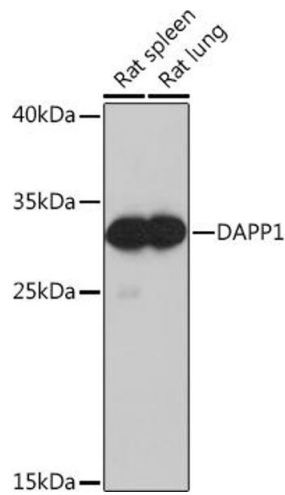
---

Application Notes:	WB,1:500 - 1:2000,IF,1:50 - 1:200
Restrictions:	For Research Use only

## Handling

---

Format:	Liquid
Buffer:	PBS with 0.02 % sodium azide,50 % glycerol, pH 7.3.
Preservative:	Sodium azide
Precaution of Use:	This product contains Sodium azide: a POISONOUS AND HAZARDOUS SUBSTANCE which should be handled by trained staff only.
Storage:	-20 °C
Storage Comment:	Store at -20°C. Avoid freeze / thaw cycles.



### Western Blotting

**Image 1.** Western blot analysis of extracts of various cell lines, using D antibody (ABIN6129008, ABIN6139405, ABIN6139406 and ABIN6217813) at 1:1000 dilution. Secondary antibody: HRP Goat Anti-Rabbit IgG (H+L) (ABIN1684268 and ABIN3020597) at 1:10000 dilution. Lysates/proteins: 25 µg per lane. Blocking buffer: 3 % nonfat dry milk in TBST. Detection: ECL Basic Kit (RM00020). Exposure time: 10s.