



[Go to Product page](#)

Datasheet for ABIN6139475  
**anti-DDT antibody (AA 1-118)**

1 Image

Overview

Quantity:	100 µL
Target:	DDT
Binding Specificity:	AA 1-118
Reactivity:	Human
Host:	Rabbit
Clonality:	Polyclonal
Conjugate:	This DDT antibody is un-conjugated
Application:	Western Blotting (WB)

Product Details

Immunogen:	Recombinant fusion protein containing a sequence corresponding to amino acids 1-118 of human DDT (NP_001346.1).
Sequence:	MPFLELDTNL PANRVPAGLE KRLCAAAASI LGKPADRVNV TVRPGLAMAL SGSTEPCAQL SISSIGVVGT AEDNRSHSAH FFEFLTKELA LGQDRILIRF FPLESWQIGK IGTVMTFL
Isotype:	IgG
Cross-Reactivity:	Human, Mouse, Rat
Characteristics:	Polyclonal Antibodies
Purification:	Affinity purification

## Target Details

---

Target:	DDT
Alternative Name:	DDT ( <a href="#">DDT Products</a> )
Background:	D-dopachrome tautomerase converts D-dopachrome into 5,6-dihydroxyindole. The DDT gene is related to the migration inhibitory factor (MIF) in terms of sequence, enzyme activity, and gene structure. DDT and MIF are closely linked on chromosome 22.,DDT,DDCT,Cell Biology & Developmental Biology,DDT
Molecular Weight:	11 kDa/12 kDa
Gene ID:	1652
UniProt:	<a href="#">P30046</a>

## Application Details

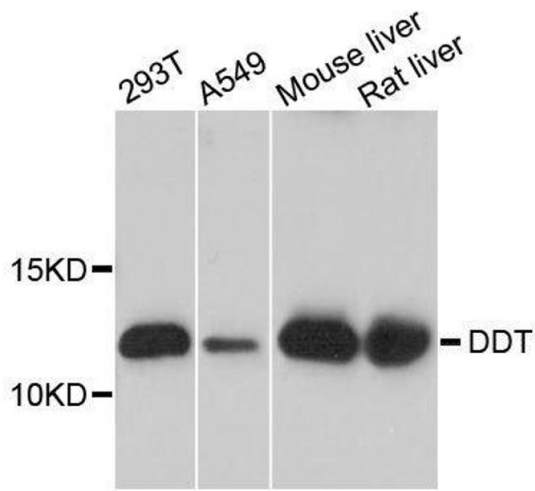
---

Application Notes:	WB,1:200 - 1:2000
Comment:	HIGH QUALITY
Restrictions:	For Research Use only

## Handling

---

Format:	Liquid
Buffer:	PBS with 0.02 % sodium azide,50 % glycerol, pH 7.3.
Preservative:	Sodium azide
Precaution of Use:	This product contains Sodium azide: a POISONOUS AND HAZARDOUS SUBSTANCE which should be handled by trained staff only.
Storage:	-20 °C
Storage Comment:	Store at -20°C. Avoid freeze / thaw cycles.



### Western Blotting

**Image 1.** Western blot analysis of extracts of various cell lines, using DDT antibody.