

Datasheet for ABIN6139669
anti-DLX2 antibody (AA 1-140)



[Go to Product page](#)

1 Image

Overview

Quantity:	100 µL
Target:	DLX2
Binding Specificity:	AA 1-140
Reactivity:	Human
Host:	Rabbit
Clonality:	Polyclonal
Conjugate:	This DLX2 antibody is un-conjugated
Application:	Western Blotting (WB)

Product Details

Immunogen:	Recombinant fusion protein containing a sequence corresponding to amino acids 1-140 of human DLX2 (NP_004396.1).
Sequence:	MTGVFDSLVA DMHSTQIAAS STYHQHQPP SGGGAGPGGN SSSSSSLHKP QESPTLPVST ATDSSYYTNQ QHPAGGGGGG GSPYAHMGSY QYQASGLNNV PYSAKSSYDL GYTAAYTSYA PYGTSSSPAN NEPEKEDLEP
Isotype:	IgG
Cross-Reactivity:	Rat
Characteristics:	Polyclonal Antibodies
Purification:	Affinity purification

Target Details

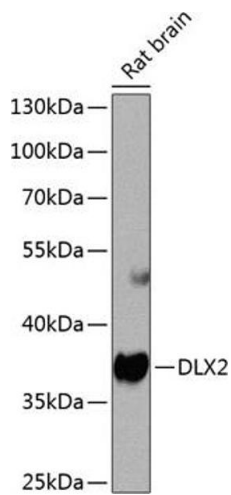
Target:	DLX2
Alternative Name:	DLX2 (DLX2 Products)
Background:	Many vertebrate homeo box-containing genes have been identified on the basis of their sequence similarity with Drosophila developmental genes. Members of the Dlx gene family contain a homeobox that is related to that of Distal-less (Dll), a gene expressed in the head and limbs of the developing fruit fly. The Distal-less (Dlx) family of genes comprises at least 6 different members, DLX1-DLX6. The DLX proteins are postulated to play a role in forebrain and craniofacial development. This gene is located in a tail-to-tail configuration with another member of the gene family on the long arm of chromosome 2.,DLX2, TES-1, TES1, Epigenetics & Nuclear Signaling, Transcription Factors, Signal Transduction, Neuroscience, Stem Cells, Neural Stem Cells, DLX2
Molecular Weight:	23 kDa/34 kDa
Gene ID:	1746
UniProt:	Q07687

Application Details

Application Notes:	WB, 1:500 - 1:2000
Restrictions:	For Research Use only

Handling

Format:	Liquid
Buffer:	PBS with 0.02 % sodium azide, 50 % glycerol, pH 7.3.
Preservative:	Sodium azide
Precaution of Use:	This product contains Sodium azide: a POISONOUS AND HAZARDOUS SUBSTANCE which should be handled by trained staff only.
Storage:	-20 °C
Storage Comment:	Store at -20°C. Avoid freeze / thaw cycles.



Western Blotting

Image 1. Western blot analysis of extracts of rat brain, using DLX2 antibody at 1:1000 dilution. Secondary antibody: HRP Goat Anti-Rabbit IgG (H+L) (ABIN1684268 and ABIN3020597) at 1:10000 dilution. Lysates/proteins: 25 µg per lane. Blocking buffer: 3% nonfat dry milk in TBST. Detection: ECL Basic Kit (RM00020). Exposure time: 90s.