



[Go to Product page](#)

Datasheet for ABIN6139675
anti-DLX6 antibody (AA 119-293)

1 Image

Overview

Quantity:	100 µL
Target:	DLX6
Binding Specificity:	AA 119-293
Reactivity:	Human
Host:	Rabbit
Clonality:	Polyclonal
Conjugate:	This DLX6 antibody is un-conjugated
Application:	Western Blotting (WB)

Product Details

Immunogen:	Recombinant fusion protein containing a sequence corresponding to amino acids 119-293 of human DLX6 (NP_005213.3).
Sequence:	MSHSQHSPYL QSYHNSSAAA QTRGDDTDQQ KTTVIENGEI RFNGKGGKIR KPRTIYSSLQ LQALNHRFQQ TQYLALPERA ELAASLGLTQ TQVKIWFQNK RSKFKKLLKQ GSNPHESDPL QGSAAALSPRS PALPPVWDVS ASAKGVSMPP NSYMPGYSHW YSSPHQDTMQ RPQMM
Isotype:	IgG
Cross-Reactivity:	Human
Characteristics:	Polyclonal Antibodies
Purification:	Affinity purification

Target Details

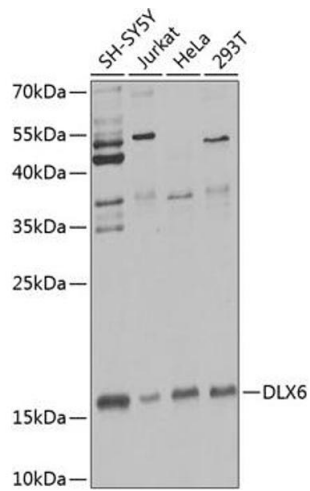
Target:	DLX6
Alternative Name:	DLX6 (DLX6 Products)
Background:	This gene encodes a member of a homeobox transcription factor gene family similar to the Drosophila distal-less gene. This family is comprised of at least 6 different members that encode proteins with roles in forebrain and craniofacial development. This gene is in a tail-to-tail configuration with another member of the family on the long arm of chromosome 7.,DLX6,Epigenetics & Nuclear Signaling,Transcription Factors,DLX6
Molecular Weight:	19 kDa/29 kDa/32 kDa
Gene ID:	1750
UniProt:	P56179

Application Details

Application Notes:	WB,1:500 - 1:2000
Comment:	HIGH QUALITY
Restrictions:	For Research Use only

Handling

Format:	Liquid
Buffer:	PBS with 0.02 % sodium azide,50 % glycerol, pH 7.3.
Preservative:	Sodium azide
Precaution of Use:	This product contains Sodium azide: a POISONOUS AND HAZARDOUS SUBSTANCE which should be handled by trained staff only.
Storage:	-20 °C
Storage Comment:	Store at -20°C. Avoid freeze / thaw cycles.



Western Blotting

Image 1. Western blot analysis of extracts of various cell lines, using DLX6 Antibody (ABIN6131792, ABIN6139675, ABIN6139676 and ABIN6223589) at 1:1000 dilution. Secondary antibody: HRP Goat Anti-Rabbit IgG (H+L) (ABIN1684268 and ABIN3020597) at 1:10000 dilution. Lysates/proteins: 25 µg per lane. Blocking buffer: 3 % nonfat dry milk in TBST. Detection: ECL Enhanced Kit (RM00021). Exposure time: 60s.