



[Go to Product page](#)

Datasheet for ABIN6139765  
**anti-DOK2 antibody (AA 1-260)**

1 Image

Overview

Quantity:	100 µL
Target:	DOK2
Binding Specificity:	AA 1-260
Reactivity:	Human
Host:	Rabbit
Clonality:	Polyclonal
Conjugate:	This DOK2 antibody is un-conjugated
Application:	Western Blotting (WB)

Product Details

Immunogen:	Recombinant fusion protein containing a sequence corresponding to amino acids 1-260 of human DOK2 (NP_003965.2).
Sequence:	MGDGAVKQGF LYLQQQTFG KKWRRFGASL YGGSDCALAR LELQEGPEKP RRCEAARKVI RLSDCLRVAE AGGEASSPRD TSAFFLETKE RLYLLAAPAA ERGDWVQAIC LLAFPGQRKE LSGPEGKQSR PCMEENELYS SAVTVGPHKE FAVTMRPTEA SERCHLRGSY TLRAGESALE LWGGPEPGTQ LYDWPYRFLR RFGDRKVTFS FEAGRRCVSG EGNFEFETRQ GNEIFLAL EE AISAQKNAAP ATPQPQPATI
Isotype:	IgG
Cross-Reactivity:	Human, Mouse
Characteristics:	Polyclonal Antibodies
Purification:	Affinity purification

## Target Details

---

Target:	DOK2
Alternative Name:	DOK2 ( <a href="#">DOK2 Products</a> )
Background:	<p>The protein encoded by this gene is constitutively tyrosine phosphorylated in hematopoietic progenitors isolated from chronic myelogenous leukemia (CML) patients in the chronic phase. It may be a critical substrate for p210(bcr/abl), a chimeric protein whose presence is associated with CML. This encoded protein binds p120 (RasGAP) from CML cells.,DOK2,p56DOK,p56dok-2,Cancer,Signal Transduction,Kinase,Tyrosine kinases,ErbB-HER Signaling Pathway,DOK2</p>
Molecular Weight:	45 kDa
Gene ID:	9046
UniProt:	<a href="#">O60496</a>

## Application Details

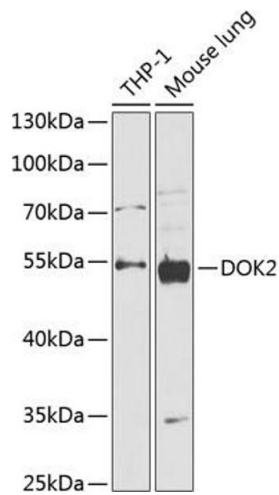
---

Application Notes:	WB,1:500 - 1:2000
Restrictions:	For Research Use only

## Handling

---

Format:	Liquid
Buffer:	PBS with 0.02 % sodium azide,50 % glycerol, pH 7.3.
Preservative:	Sodium azide
Precaution of Use:	This product contains Sodium azide: a POISONOUS AND HAZARDOUS SUBSTANCE which should be handled by trained staff only.
Storage:	-20 °C
Storage Comment:	Store at -20°C. Avoid freeze / thaw cycles.



### Western Blotting

**Image 1.** Western blot analysis of extracts of various cell lines, using DOK2 antibody (ABIN6130308, ABIN6139765, ABIN6139767 and ABIN6218320) at 1:1000 dilution. Secondary antibody: HRP Goat Anti-Rabbit IgG (H+L) (ABIN1684268 and ABIN3020597) at 1:10000 dilution. Lysates/proteins: 25 µg per lane. Blocking buffer: 3 % nonfat dry milk in TBST. Detection: ECL Basic Kit (RM00020). Exposure time: 30s.