



[Go to Product page](#)

Datasheet for ABIN6139781  
**anti-DPEP1 antibody (AA 17-385)**

1 Image

Overview

Quantity:	100 µL
Target:	DPEP1
Binding Specificity:	AA 17-385
Reactivity:	Human
Host:	Rabbit
Clonality:	Polyclonal
Conjugate:	This DPEP1 antibody is un-conjugated
Application:	Western Blotting (WB)

Product Details

Immunogen:	Recombinant fusion protein containing a sequence corresponding to amino acids 17-385 of human DPEP1 (NP_001121613.1).
Sequence:	DFFRDEAERI MRDSPVIDGH NDLPWQLLDM FNNRLQDERA NLTTLAGTHT NIPKLRAGFV GGQFWSVYTP CDTQNKDAVR RTLEQMDVVH RMCRMYPETF LYVTSSAGIR QAFREGKVAS LIGVEGGHSI DSSLGVLRAL YQLGMRYLTL THSCNTPWAD NWLVDTGDSE PQSQGLSPFG QRVVKELNRL GVLIDLAHVS VATMKATLQL SRAPVIFSHS SAYSVCASRR NVPDDVLRLLV KQTDSLVMVN FYNNYISCTN KANLSQVADH LDHIKEVAGA RAVGFGGDFD GVPRVPEGLE DVSKYPDLIA ELLRRNWTEA EVKGALADNL LRVFEAVEQA SNLTQAPEEE PIPLDQLGGS CRTHYGYSS
Isotype:	IgG
Cross-Reactivity:	Human, Mouse

## Product Details

---

Characteristics: Polyclonal Antibodies

Purification: Affinity purification

## Target Details

---

Target: DPEP1

Alternative Name: DPEP1 ([DPEP1 Products](#))

Background: The protein encoded by this gene is a kidney membrane enzyme involved in the metabolism of glutathione and other similar proteins by dipeptide hydrolysis. The encoded protein is known to regulate leukotriene activity by catalyzing the conversion of leukotriene D4 to leukotriene E4. This protein uses zinc as a cofactor and acts as a disulfide-linked homodimer. Two transcript variants encoding the same protein have been found for this gene.,DPEP1,MBD1,MDP,RDP,Cancer,Tumor biomarkers,Cell Biology & Developmental Biology,Ubiquitin,DPEP1

Molecular Weight: 45 kDa

Gene ID: 1800

UniProt: [P16444](#)

Pathways: [Inositol Metabolic Process](#)

## Application Details

---

Application Notes: WB,1:500 - 1:2000

Restrictions: For Research Use only

## Handling

---

Format: Liquid

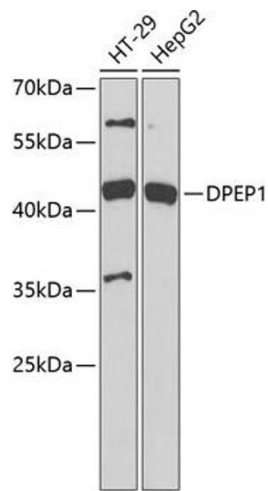
Buffer: PBS with 0.02 % sodium azide,50 % glycerol, pH 7.3.

Preservative: Sodium azide

Precaution of Use: This product contains Sodium azide: a POISONOUS AND HAZARDOUS SUBSTANCE which should be handled by trained staff only.

Storage: -20 °C

Storage Comment: Store at -20°C. Avoid freeze / thaw cycles.



### Western Blotting

**Image 1.** Western blot analysis of extracts of various cell lines, using DPEP1 antibody (ABIN6130950, ABIN6139781, ABIN6139782 and ABIN6221888) at 1:1000 dilution. Secondary antibody: HRP Goat Anti-Rabbit IgG (H+L) (ABIN1684268 and ABIN3020597) at 1:10000 dilution. Lysates/proteins: 25 µg per lane. Blocking buffer: 3 % nonfat dry milk in TBST.