



[Go to Product page](#)

Datasheet for ABIN6139800
anti-DPP8 antibody (AA 10-230)

1 Image

Overview

Quantity:	100 µL
Target:	DPP8
Binding Specificity:	AA 10-230
Reactivity:	Human
Host:	Rabbit
Clonality:	Polyclonal
Conjugate:	This DPP8 antibody is un-conjugated
Application:	Western Blotting (WB)

Product Details

Immunogen:	Recombinant fusion protein containing a sequence corresponding to amino acids 10-230 of human DPP8 (NP_932065.1).
Sequence:	IKSGKCNMAA AMETEQLGVE IFETADCEEN IESQDRPKLE PFYVERYSWS QLKKLLADTR KYHGYMMAKA PHDFMFVKRN DPDGPHSDRI YYLAMSGENR ENTLFYSEIP KTINRAAVLM LSWKPLDLF QATLDYGMYS REEELLRERK RIGTVGIASY DYHQSGSTFL FQAGSGIYHV KDGGPQGFTQ QPLRPNLVET SCPNIRMDPK LCPADPDWIA F
Isotype:	IgG
Cross-Reactivity:	Human, Mouse, Rat
Characteristics:	Polyclonal Antibodies
Purification:	Affinity purification

Target Details

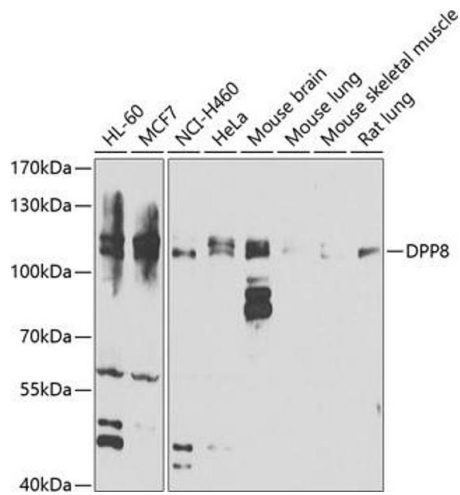
Target:	DPP8
Alternative Name:	DPP8 (DPP8 Products)
Background:	This gene encodes a member of the peptidase S9B family, a small family of dipeptidyl peptidases that are able to cleave peptide substrates at a prolyl bond. The encoded protein shares similarity with dipeptidyl peptidase IV in that it is ubiquitously expressed, and hydrolyzes the same substrates. These similarities suggest that, like dipeptidyl peptidase IV, this protein may play a role in T-cell activation and immune function. Alternatively spliced transcript variants encoding different isoforms have been described.,DPP8,DP8,DPRP-1,DPRP1,MST097,MSTP097,MSTP135,MSTP141,Cell Biology & Developmental Biology,Ubiquitin,DPP8
Molecular Weight:	83 kDa/89 kDa/97 kDa/101 kDa/103 kDa
Gene ID:	54878
UniProt:	Q6V1X1

Application Details

Application Notes:	WB,1:500 - 1:2000
Comment:	HIGH QUALITY
Restrictions:	For Research Use only

Handling

Format:	Liquid
Buffer:	PBS with 0.02 % sodium azide,50 % glycerol, pH 7.3.
Preservative:	Sodium azide
Precaution of Use:	This product contains Sodium azide: a POISONOUS AND HAZARDOUS SUBSTANCE which should be handled by trained staff only.
Storage:	-20 °C
Storage Comment:	Store at -20°C. Avoid freeze / thaw cycles.



Western Blotting

Image 1. Western blot analysis of extracts of various cell lines, using DPP8 antibody (ABIN6130315, ABIN6139800, ABIN6139801 and ABIN6222925) at 1:1000 dilution. Secondary antibody: HRP Goat Anti-Rabbit IgG (H+L) (ABIN1684268 and ABIN3020597) at 1:10000 dilution. Lysates/proteins: 25 µg per lane. Blocking buffer: 3% nonfat dry milk in TBST. Detection: ECL Basic Kit (RM00020). Exposure time: 30s.