

Datasheet for ABIN6139821

anti-Dopamine d2 Receptor antibody (AA 214-373)



[Go to Product page](#)

1 Image

Overview

Quantity:	100 µL
Target:	Dopamine d2 Receptor (DRD2)
Binding Specificity:	AA 214-373
Reactivity:	Human
Host:	Rabbit
Clonality:	Polyclonal
Conjugate:	This Dopamine d2 Receptor antibody is un-conjugated
Application:	Western Blotting (WB)

Product Details

Immunogen:	Recombinant fusion protein containing a sequence corresponding to amino acids 214-373 of human DRD2 (NP_000786.1).
Sequence:	IVLRRRRKRV NTKRSSRAFR AHLRAPLKGN CTHPEDMKLC TVIMKSNGSF PVNRRRVEAA RRAQELEMEM LSSTSPPERT RYSPIPPSHH QLTLDPDSHH GLHSTPDSPA KPEKNGHAKD HPKIAKIFEI QTMPNGKTRT SLKTMSRRKL SQQKEKKATQ
Isotype:	IgG
Cross-Reactivity:	Human, Mouse, Rat
Characteristics:	Polyclonal Antibodies
Purification:	Affinity purification

Target Details

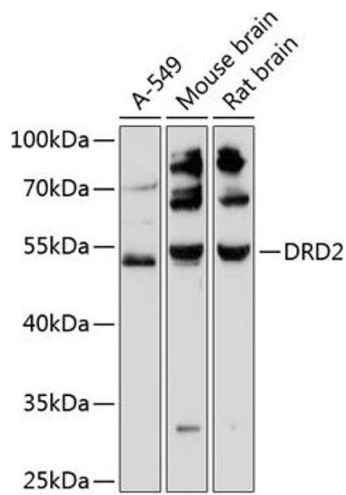
Target:	Dopamine d2 Receptor (DRD2)
Alternative Name:	DRD2 (DRD2 Products)
Background:	<p>This gene encodes the D2 subtype of the dopamine receptor. This G-protein coupled receptor inhibits adenylyl cyclase activity. A missense mutation in this gene causes myoclonus dystonia, other mutations have been associated with schizophrenia. Alternative splicing of this gene results in two transcript variants encoding different isoforms. A third variant has been described, but it has not been determined whether this form is normal or due to aberrant splicing.</p> <p>DRD2,D2DR,D2R,Signal Transduction,G protein signaling,G-Protein-Coupled Receptors(GPCR),Neuroscience,Cell Type Marker,Neurodegenerative Diseases,Dopamine Signaling in Parkinson's Disease,Neuron marker,Dendrite marker,DRD2</p>
Molecular Weight:	47 kDa/50 kDa
Gene ID:	1813
UniProt:	P14416
Pathways:	Positive Regulation of Peptide Hormone Secretion , Negative Regulation of Hormone Secretion , cAMP Metabolic Process , Inositol Metabolic Process , Regulation of G-Protein Coupled Receptor Protein Signaling , Feeding Behaviour , Negative Regulation of Transporter Activity , Regulation of long-term Neuronal Synaptic Plasticity

Application Details

Application Notes:	WB,1:500 - 1:1000
Restrictions:	For Research Use only

Handling

Format:	Liquid
Buffer:	PBS with 0.02 % sodium azide,50 % glycerol, pH 7.3.
Preservative:	Sodium azide
Precaution of Use:	This product contains Sodium azide: a POISONOUS AND HAZARDOUS SUBSTANCE which should be handled by trained staff only.
Storage:	-20 °C
Storage Comment:	Store at -20°C. Avoid freeze / thaw cycles.



Western Blotting

Image 1. Western blot analysis of extracts of various cell lines, using DRD2 antibody (ABIN6129503, ABIN6139821, ABIN6139822 and ABIN6216745) at 1:3000 dilution. Secondary antibody: HRP Goat Anti-Rabbit IgG (H+L) (ABIN1684268 and ABIN3020597) at 1:10000 dilution. Lysates/proteins: 25 µg per lane. Blocking buffer: 3 % nonfat dry milk in TBST. Detection: ECL Basic Kit (RM00020). Exposure time: 90s.