



[Go to Product page](#)

Datasheet for ABIN6139838
anti-Desmoplakin antibody (AA 1-100)

4 Images

Overview

| | |
|----------------------|---|
| Quantity: | 100 µL |
| Target: | Desmoplakin (DSP) |
| Binding Specificity: | AA 1-100 |
| Reactivity: | Human |
| Host: | Rabbit |
| Clonality: | Polyclonal |
| Conjugate: | This Desmoplakin antibody is un-conjugated |
| Application: | Immunohistochemistry (IHC), Western Blotting (WB) |

Product Details

| | |
|-------------------|--|
| Immunogen: | A synthetic peptide corresponding to a sequence within amino acids 1-100 of human Desmoplakin (NP_004406.2). |
| Sequence: | MSCNGGSHPR INTLGRMIRA ESGPDLRYEV TSGGGGTSRM YYSRRGVITD QNSDGYCQTG TMSRHQNT IQELLQNCSD CLMRAELIVQ PELKYGDGIQ |
| Isotype: | IgG |
| Cross-Reactivity: | Human, Mouse, Rat |
| Characteristics: | Polyclonal Antibodies |
| Purification: | Affinity purification |

Target Details

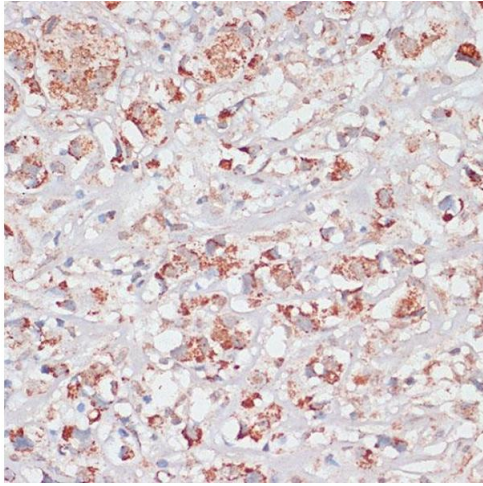
| | |
|-------------------|---|
| Target: | Desmoplakin (DSP) |
| Alternative Name: | DSP (DSP Products) |
| Background: | This gene encodes a protein that anchors intermediate filaments to desmosomal plaques and forms an obligate component of functional desmosomes. Mutations in this gene are the cause of several cardiomyopathies and keratodermas, including skin fragility-woolly hair syndrome. Alternative splicing results in multiple transcript variants.,DCWHKTA,DP,DSP,Epigenetics & Nuclear Signaling,RNA Binding,Signal Transduction,Cell Biology & Developmental Biology,Cytoskeleton,Extracellular Matrix,DSP |
| Molecular Weight: | 260 kDa/278 kDa/331 kDa |
| Gene ID: | 1832 |
| UniProt: | P15924 |
| Pathways: | Cell-Cell Junction Organization |

Application Details

| | |
|--------------------|------------------------------------|
| Application Notes: | WB,1:500 - 1:2000,IHC,1:50 - 1:200 |
| Restrictions: | For Research Use only |

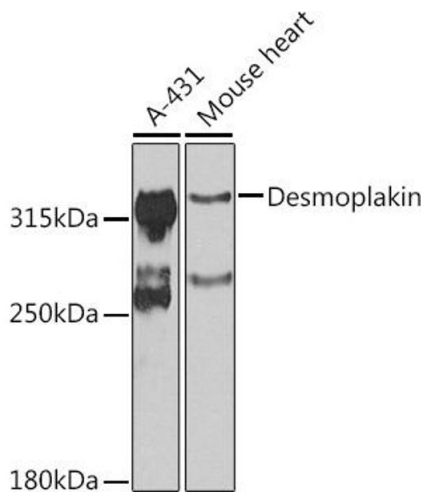
Handling

| | |
|--------------------|--|
| Format: | Liquid |
| Buffer: | PBS with 0.02 % sodium azide,50 % glycerol, pH 7.3. |
| Preservative: | Sodium azide |
| Precaution of Use: | This product contains Sodium azide: a POISONOUS AND HAZARDOUS SUBSTANCE which should be handled by trained staff only. |
| Storage: | -20 °C |
| Storage Comment: | Store at -20°C. Avoid freeze / thaw cycles. |



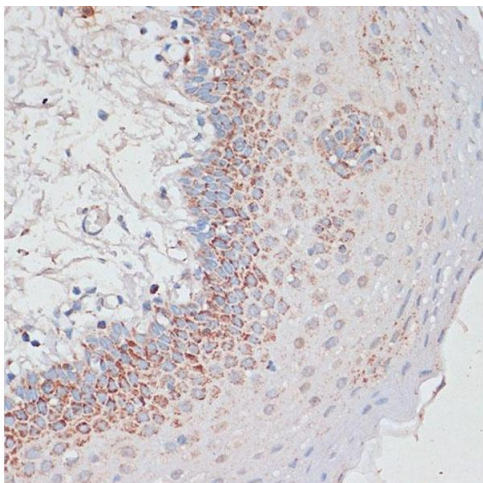
Immunohistochemistry

Image 1. Immunohistochemistry of paraffin-embedded Human breast cancer using Desmoplakin antibody (ABIN6134106, ABIN6139838, ABIN6139840 and ABIN6223548) at dilution of 1:100 (40x lens). Perform microwave antigen retrieval with 10 mM PBS buffer pH 7.2 before commencing with IHC staining protocol.



Western Blotting

Image 2. Western blot analysis of extracts of various cell lines, using Desmoplakin antibody (ABIN6134106, ABIN6139838, ABIN6139840 and ABIN6223548) at 1:1000 dilution. Secondary antibody: HRP Goat Anti-Rabbit IgG (H+L) (ABIN1684268 and ABIN3020597) at 1:10000 dilution. Lysates/proteins: 25 µg per lane. Blocking buffer: 3 % nonfat dry milk in TBST. Detection: ECL Basic Kit (RM00020). Exposure time: 90s.



Immunohistochemistry

Image 3. Immunohistochemistry of paraffin-embedded Human tonsil using Desmoplakin antibody (ABIN6134106, ABIN6139838, ABIN6139840 and ABIN6223548) at dilution of 1:100 (40x lens). Perform microwave antigen retrieval with 10 mM PBS buffer pH 7.2 before commencing with IHC staining protocol.

Please check the [product details page](#) for more images. Overall 4 images are available for ABIN6139838.