



[Go to Product page](#)

Datasheet for ABIN6139901
anti-E2F3 antibody (AA 200-300)

1 Image

Overview

Quantity:	100 µL
Target:	E2F3
Binding Specificity:	AA 200-300
Reactivity:	Human
Host:	Rabbit
Clonality:	Polyclonal
Conjugate:	This E2F3 antibody is un-conjugated
Application:	Western Blotting (WB)

Product Details

Immunogen:	A synthetic peptide corresponding to a sequence within amino acids 200-300 of human E2F3 (NP_001230005.1).
Sequence:	SIESLQIHLA STQGPIEVYL CPEETETHSP MKTNNQDHNG NIPKPASKDL ASTNSGHSDC SVSMGNLSPL ASPANLLQQT EDQIPSNLEG PFVNLLPPLL Q
Isotype:	IgG
Cross-Reactivity:	Mouse, Rat
Characteristics:	Polyclonal Antibodies
Purification:	Affinity purification

Target Details

Target: E2F3

Abstract: [E2F3 Products](#)

Background: This gene encodes a member of a small family of transcription factors that function through binding of DP interaction partner proteins. The encoded protein recognizes a specific sequence motif in DNA and interacts directly with the retinoblastoma protein (pRB) to regulate the expression of genes involved in the cell cycle. Altered copy number and activity of this gene have been observed in a number of human cancers. There are pseudogenes for this gene on chromosomes 2 and 17. Alternative splicing results in multiple transcript variants.,E2F3,E2F-3,Epigenetics & Nuclear Signaling,Transcription Factors,Signal Transduction,ErbB-HER Signaling Pathway,E2F3

Molecular Weight: 37 kDa/49 kDa

Gene ID: 1871

UniProt: [O00716](#)

Application Details

Application Notes: WB,1:500 - 1:2000

Restrictions: For Research Use only

Handling

Format: Liquid

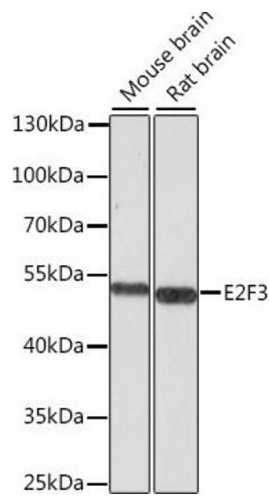
Buffer: PBS with 0.02 % sodium azide,50 % glycerol, pH 7.3.

Preservative: Sodium azide

Precaution of Use: This product contains Sodium azide: a POISONOUS AND HAZARDOUS SUBSTANCE which should be handled by trained staff only.

Storage: -20 °C

Storage Comment: Store at -20°C. Avoid freeze / thaw cycles.



Western Blotting

Image 1. Western blot analysis of extracts of various cell lines, using E2F3 antibody (ABIN6134586, ABIN6139901, ABIN6139902 and ABIN7101833) at 1:1000 dilution. Secondary antibody: HRP Goat Anti-Rabbit IgG (H+L) (ABIN1684268 and ABIN3020597) at 1:10000 dilution. Lysates/proteins: 25 µg per lane. Blocking buffer: 3% nonfat dry milk in TBST. Detection: ECL Basic Kit (RM00020). Exposure time: 10s.