

Datasheet for ABIN6139908
anti-EBF1 antibody (C-Term)



[Go to Product page](#)

1 Image

Overview

Quantity:	100 µL
Target:	EBF1
Binding Specificity:	C-Term
Reactivity:	Human
Host:	Rabbit
Clonality:	Polyclonal
Conjugate:	This EBF1 antibody is un-conjugated
Application:	Western Blotting (WB)

Product Details

Immunogen:	A synthetic peptide corresponding to a sequence within amino acids 500 to the C-terminus of human EBF1 (NP_076870.1).
Sequence:	GGSPFLNGS AANSPYAIVP SSPTMASSTS LPSNCSSSSG IFSFSPANMV SAVKQKSAFA PVVRPQTSPPTCTSTNGNS LQAISGMIVP PM
Isotype:	IgG
Cross-Reactivity:	Human
Characteristics:	Polyclonal Antibodies
Purification:	Affinity purification

Target Details

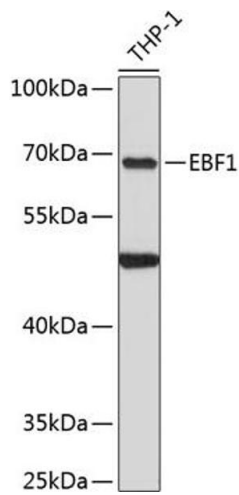
Target:	EBF1
Alternative Name:	EBF1 (EBF1 Products)
Background:	Key pioneer transcription factor of B-cell specification and commitment. Recognizes variations of the palindromic sequence 5'-ATTCCCNNGGAATT-3'. Operates in a transcription factor network to activate B-cell-specific genes and repress genes associated with alternative cell fates. For instance, positively regulates many B-cell specific genes including BCR or CD40 while repressing genes that direct cells into alternative lineages, including GATA3 and TCF7 for the T-cell lineage. In addition to its role during lymphopoiesis, controls the thermogenic gene program in adipocytes during development and in response to environmental cold (By similarity,.EBF1,COE1,EBF,O/E-1,OLF1,Epigenetics & Nuclear Signaling,Transcription Factors,EBF1
Molecular Weight:	61 kDa/64 kDa
Gene ID:	1879
UniProt:	Q9UH73

Application Details

Application Notes:	WB,1:500 - 1:2000
Restrictions:	For Research Use only

Handling

Format:	Liquid
Buffer:	PBS with 0.02 % sodium azide,50 % glycerol, pH 7.3.
Preservative:	Sodium azide
Precaution of Use:	This product contains Sodium azide: a POISONOUS AND HAZARDOUS SUBSTANCE which should be handled by trained staff only.
Storage:	-20 °C
Storage Comment:	Store at -20°C. Avoid freeze / thaw cycles.



Western Blotting

Image 1. Western blot analysis of extracts of THP-1 cells, using EBF1 antibody at 1:3000 dilution. Secondary antibody: HRP Goat Anti-Rabbit IgG (H+L) (ABIN1684268 and ABIN3020597) at 1:10000 dilution. Lysates/proteins: 25 µg per lane. Blocking buffer: 3 % nonfat dry milk in TBST. Detection: ECL Enhanced Kit (RM00021). Exposure time: 90s.