



[Go to Product page](#)

Datasheet for ABIN6139930
anti-EDIL3 antibody (AA 250-480)

2 Images

Overview

Quantity:	100 µL
Target:	EDIL3 (DEL1)
Binding Specificity:	AA 250-480
Reactivity:	Human
Host:	Rabbit
Clonality:	Polyclonal
Conjugate:	This EDIL3 antibody is un-conjugated
Application:	Western Blotting (WB), Immunohistochemistry (IHC)

Product Details

Immunogen:	Recombinant fusion protein containing a sequence corresponding to amino acids 250-480 of human EDIL3 (NP_005702.3).
Sequence:	YSNDGKTWAM YKVKG TNEDM VFRGNIDNNT PYANSFT PPI KAQYVRLYPQ VCRRHCTLRM ELLGCELSGC SEPLGMKSGH IQDYQITASS IFRTL NMDMF TWEPRKARLD KQGKVNAWTS GHNDQSQWLQ VDLLVPTKVT GIITQGAKDF GHVQFVGSYK LAYSNDGEHW TVYQDEKQRK DKVFQGNFDN DTHRKNVIDP PIYARHIRIL PWSWYGRITL RSELLGCTEE E
Isotype:	IgG
Cross-Reactivity:	Human, Mouse
Characteristics:	Polyclonal Antibodies
Purification:	Affinity purification

Target Details

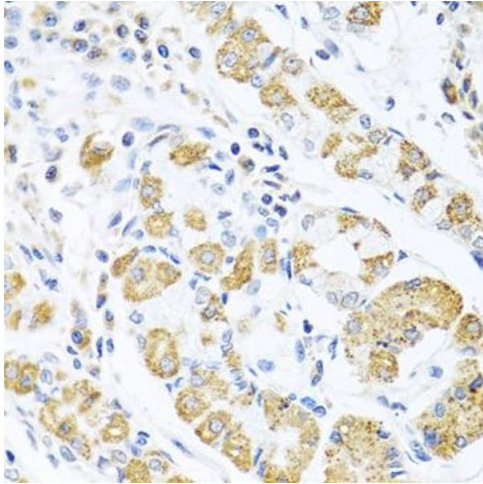
Target:	EDIL3 (DEL1)
Alternative Name:	EDIL3 (DEL1 Products)
Background:	The protein encoded by this gene is an integrin ligand. It plays an important role in mediating angiogenesis and may be important in vessel wall remodeling and development. It also influences endothelial cell behavior.,EDIL3,DEL1,Signal Transduction,Cell Biology & Developmental Biology,Cell Adhesion,Cell Adhesion Molecules,Cytoskeleton,Cardiovascular,Angiogenesis,EDIL3
Molecular Weight:	52 kDa/53 kDa
Gene ID:	10085
UniProt:	O43854

Application Details

Application Notes:	WB,1:500 - 1:2000,IHC,1:50 - 1:200
Restrictions:	For Research Use only

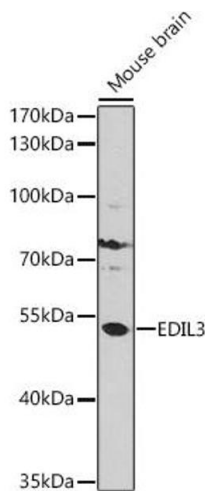
Handling

Format:	Liquid
Buffer:	PBS with 0.02 % sodium azide,50 % glycerol, pH 7.3.
Preservative:	Sodium azide
Precaution of Use:	This product contains Sodium azide: a POISONOUS AND HAZARDOUS SUBSTANCE which should be handled by trained staff only.
Storage:	-20 °C
Storage Comment:	Store at -20°C. Avoid freeze / thaw cycles.



Immunohistochemistry

Image 1. Immunohistochemistry of paraffin-embedded human stomach using EDIL3 antibody (ABIN6130999, ABIN6139930, ABIN6139932 and ABIN6217370) at dilution of 1:100 (40x lens). Perform microwave antigen retrieval with 10 mM PBS buffer pH 7.2 before commencing with IHC staining protocol.



Western Blotting

Image 2. Western blot analysis of extracts of Mouse brain, using EDIL3 antibody (ABIN6130999, ABIN6139930, ABIN6139932 and ABIN6217370) at 1:1000 dilution. Secondary antibody: HRP Goat Anti-Rabbit IgG (H+L) (ABIN1684268 and ABIN3020597) at 1:10000 dilution. Lysates/proteins: 25 µg per lane. Blocking buffer: 3 % nonfat dry milk in TBST. Detection: ECL Enhanced Kit (RM00021). Exposure time: 90s.