

Datasheet for ABIN6139951  
**anti-EEF1G antibody (AA 168-437)**



[Go to Product page](#)

6 Images

## Overview

Quantity:	100 µL
Target:	EEF1G
Binding Specificity:	AA 168-437
Reactivity:	Human
Host:	Rabbit
Clonality:	Polyclonal
Conjugate:	This EEF1G antibody is un-conjugated
Application:	Western Blotting (WB), Immunohistochemistry (IHC), Immunofluorescence (IF)

## Product Details

Immunogen:	Recombinant fusion protein containing a sequence corresponding to amino acids 168-437 of human eEF1G (NP_001395.1).
Sequence:	LLWLYKQVLE PSFRQAFPNT NRWFLTCINQ PQFRAVLGEV KLCEKMAQFD AKKFAETQPK KDTPRKEKGS REEKQKPQAE RKEEKKAAAP APEEEMDECE QALAAEPKAK DPF AHLPKST FVLDEFKRKY SNEDTLSVAL PYFWEHFDKD GWSLWYSEYR FPEELTQTFM SCNLITGMFQ RLDKLRKNAF ASVILFGTNN SSSISGVWVF RGQELAFPLS PDWQVDYESY TWRKLDPGSE ETQTLVREYF SWEGAFQHVG KAFNQGKIFK
Isotype:	IgG
Cross-Reactivity:	Human, Mouse, Rat
Characteristics:	Polyclonal Antibodies
Purification:	Affinity purification

## Target Details

---

Target:	EEF1G
Alternative Name:	EEF1G ( <a href="#">EEF1G Products</a> )
Background:	This gene encodes a subunit of the elongation factor-1 complex, which is responsible for the enzymatic delivery of aminoacyl tRNAs to the ribosome. This subunit contains an N-terminal glutathione transferase domain, which may be involved in regulating the assembly of multisubunit complexes containing this elongation factor and aminoacyl-tRNA synthetases.,EEF1G,EF1G,GIG35,Epigenetics & Nuclear Signaling,EEF1G
Molecular Weight:	50 kDa/56 kDa
Gene ID:	1937
UniProt:	<a href="#">P26641</a>

## Application Details

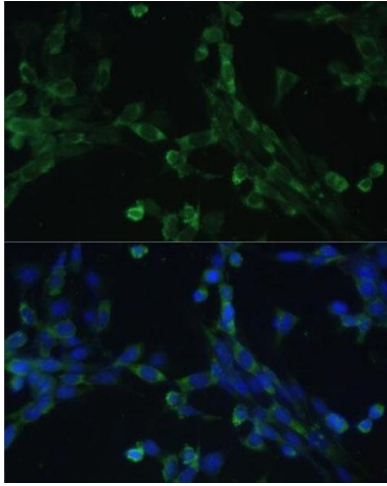
---

Application Notes:	WB,1:500 - 1:2000,IHC,1:50 - 1:100,IF,1:50 - 1:100
Comment:	HIGH QUALITY
Restrictions:	For Research Use only

## Handling

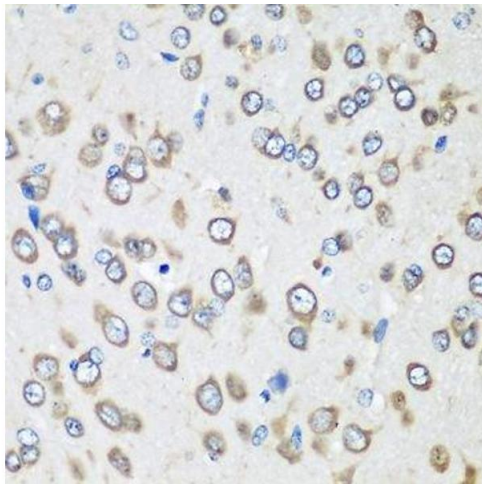
---

Format:	Liquid
Buffer:	PBS with 0.02 % sodium azide,50 % glycerol, pH 7.3.
Preservative:	Sodium azide
Precaution of Use:	This product contains Sodium azide: a POISONOUS AND HAZARDOUS SUBSTANCE which should be handled by trained staff only.
Storage:	-20 °C
Storage Comment:	Store at -20°C. Avoid freeze / thaw cycles.



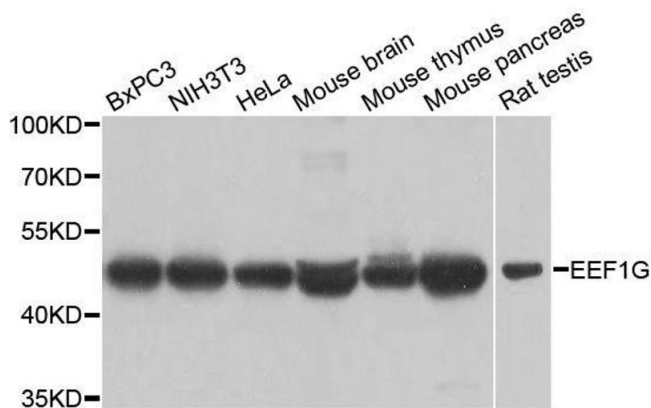
### Immunofluorescence

**Image 1.** Immunofluorescence analysis of NIH-3T3 cells using eEF1G Polyclonal Antibody (ABIN6133514, ABIN6139951, ABIN6139952 and ABIN6223877) at dilution of 1:100 (40x lens). Blue: DAPI for nuclear staining.



### Immunohistochemistry (Paraffin-embedded Sections)

**Image 2.** Immunohistochemistry of paraffin-embedded rat brain using eEF1G antibody.



### Western Blotting

**Image 3.** Western blot analysis of extracts of various cell lines, using eEF1G antibody.

Please check the [product details page](#) for more images. Overall 6 images are available for ABIN6139951.