



[Go to Product page](#)

Datasheet for ABIN6140017  
**anti-EIF1AX antibody (AA 10-144)**

5 Images

Overview

Quantity:	100 µL
Target:	EIF1AX
Binding Specificity:	AA 10-144
Reactivity:	Human
Host:	Rabbit
Clonality:	Polyclonal
Conjugate:	This EIF1AX antibody is un-conjugated
Application:	Immunohistochemistry (IHC), Western Blotting (WB), Immunofluorescence (IF)

Product Details

Immunogen:	Recombinant fusion protein containing a sequence corresponding to amino acids 10-144 of human EIF1AX (NP_001403.1).
Sequence:	KNRRRGKNEN ESEKRELVFK EDGQEYAQVI KMLGNRLEA MCFDGVKRLC HIRGKLRKKV WINTSDIILV GLRDYQDNKA DVILKYNADE ARSLKAYGEL PEHAKINETD TFGPGDDDEI QFDDIGDDDE DIDI
Isotype:	IgG
Cross-Reactivity:	Human, Mouse, Rat
Characteristics:	Polyclonal Antibodies
Purification:	Affinity purification

## Target Details

---

Target:	EIF1AX
Alternative Name:	EIF1AX ( <a href="#">EIF1AX Products</a> )
Background:	This gene encodes an essential eukaryotic translation initiation factor. The protein is required for the binding of the 43S complex (a 40S subunit, eIF2/GTP/Met-tRNAi and eIF3) to the 5' end of capped RNA.,EIF1AX,EIF1A,EIF1AP1,EIF4C,eIF-1A,eIF-4C,X-linked,Epigenetics & Nuclear Signaling,RNA Binding,EIF1AX
Molecular Weight:	16 kDa
Gene ID:	1964
UniProt:	<a href="#">P47813</a>

## Application Details

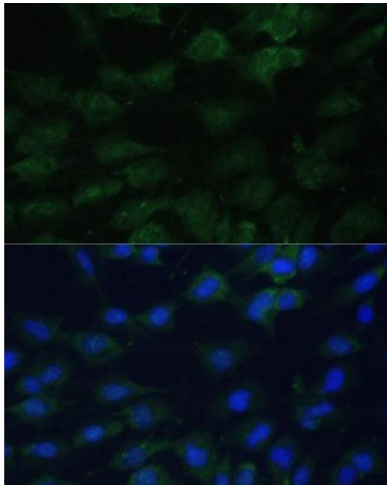
---

Application Notes:	WB,1:200 - 1:2000,IHC,1:100 - 1:200,IF,1:50 - 1:200
Comment:	HIGH QUALITY
Restrictions:	For Research Use only

## Handling

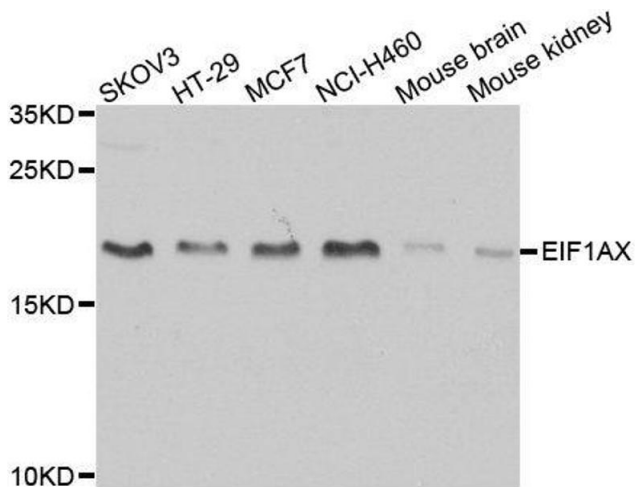
---

Format:	Liquid
Buffer:	PBS with 0.02 % sodium azide,50 % glycerol, pH 7.3.
Preservative:	Sodium azide
Precaution of Use:	This product contains Sodium azide: a POISONOUS AND HAZARDOUS SUBSTANCE which should be handled by trained staff only.
Storage:	-20 °C
Storage Comment:	Store at -20°C. Avoid freeze / thaw cycles.



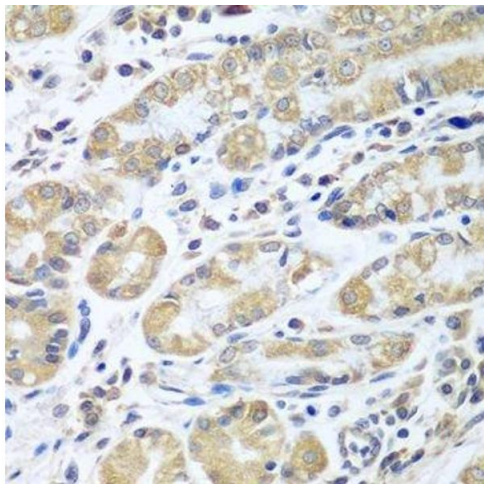
### Immunofluorescence

**Image 1.** Immunofluorescence analysis of C6 cells using EIF1AX Polyclonal Antibody (ABIN6131999, ABIN6140017, ABIN6140018 and ABIN6221620) at dilution of 1:100 (40x lens). Blue: DAPI for nuclear staining.



### Western Blotting

**Image 2.** Western blot analysis of extracts of various cell lines, using EIF1AX antibody.



### Immunohistochemistry (Paraffin-embedded Sections)

**Image 3.** Immunohistochemistry of paraffin-embedded human stomach using EIF1AX antibody.

Please check the [product details page](#) for more images. Overall 5 images are available for ABIN6140017.