



[Go to Product page](#)

Datasheet for ABIN6140108
anti-ELAC2 antibody (AA 1-270)

4 Images

Overview

Quantity:	100 µL
Target:	ELAC2
Binding Specificity:	AA 1-270
Reactivity:	Human
Host:	Rabbit
Clonality:	Polyclonal
Conjugate:	This ELAC2 antibody is un-conjugated
Application:	Western Blotting (WB), Immunohistochemistry (IHC)

Product Details

Immunogen:	Recombinant fusion protein containing a sequence corresponding to amino acids 1-270 of human ELAC2 (NP_776065.1).
Sequence:	MWALCSLLRS AAGRTMSQGR TISQAPARRE RPRKDPLRHL RTREKRGPSG CSGGPNTVYL QVVAAGSRDS GAALYVFSEF NRYLFNCGEG VQRLMQEHKL KVARLDNIFL TRMHWSNVGG LSGMILTLKE TGLPKCVLSG PPQLEKYLEA IKIFSGPLKG IELAVRPHSA PEYEDTMTV YQIPIHSEQR RGKHQPWQSP ERPLSRLSPE RSSDSESSEN EPHLPHGVSQ RRGVRDSSLV VAFICKLHLK RGNFLVLKAK EMGLPVGTA
Isotype:	IgG
Cross-Reactivity:	Human, Mouse, Rat
Characteristics:	Polyclonal Antibodies
Purification:	Affinity purification

Target Details

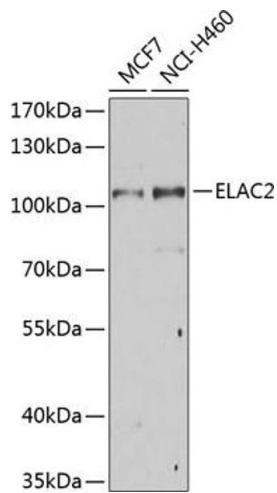
Target:	ELAC2
Alternative Name:	ELAC2 (ELAC2 Products)
Background:	<p>The protein encoded by this gene has a C-terminal domain with tRNA 3' processing endoribonuclease activity, which catalyzes the removal of the 3' trailer from precursor tRNAs. The protein also interacts with activated Smad family member 2 (Smad2) and its nuclear partner forkhead box H1 (also known as FAST-1), and reduced expression can suppress transforming growth factor-beta induced growth arrest. Mutations in this gene result in an increased risk of prostate cancer. Multiple transcript variants encoding different isoforms have been found for this gene.,ELAC2,COXPD17,ELC2,HPC2,Epigenetics & Nuclear Signaling,RNA Binding,Cancer,Cell Biology & Developmental Biology,Cell Cycle,Cell cycle inhibitors,ELAC2</p>
Molecular Weight:	50 kDa/56 kDa/87 kDa/92 kDa
Gene ID:	60528
UniProt:	Q9BQ52

Application Details

Application Notes:	WB,1:500 - 1:2000,IHC,1:50 - 1:200
Comment:	HIGH QUALITY
Restrictions:	For Research Use only

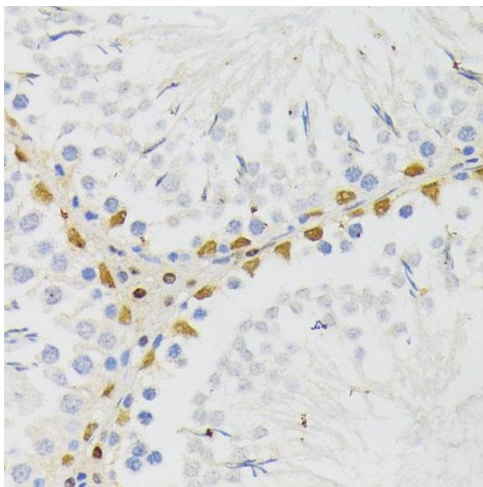
Handling

Format:	Liquid
Buffer:	PBS with 0.02 % sodium azide,50 % glycerol, pH 7.3.
Preservative:	Sodium azide
Precaution of Use:	This product contains Sodium azide: a POISONOUS AND HAZARDOUS SUBSTANCE which should be handled by trained staff only.
Storage:	-20 °C
Storage Comment:	Store at -20°C. Avoid freeze / thaw cycles.



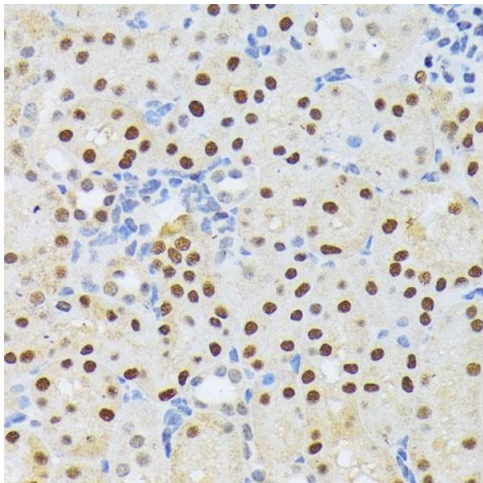
Western Blotting

Image 1. Western blot analysis of extracts of various cell lines, using EL Antibody (ABIN6132052, ABIN6140108, ABIN6140109 and ABIN6222942) at 1:1000 dilution. Secondary antibody: HRP Goat Anti-Rabbit IgG (H+L) (ABIN1684268 and ABIN3020597) at 1:10000 dilution. Lysates/proteins: 25 µg per lane. Blocking buffer: 3 % nonfat dry milk in TBST. Detection: ECL Basic Kit (RM00020). Exposure time: 30s.



Immunohistochemistry

Image 2. Immunohistochemistry of paraffin-embedded rat testis using EL antibody (ABIN6132052, ABIN6140108, ABIN6140109 and ABIN6222942) at dilution of 1:200 (40x lens). Perform microwave antigen retrieval with 10 mM PBS buffer pH 7.2 before commencing with IHC staining protocol.



Immunohistochemistry

Image 3. Immunohistochemistry of paraffin-embedded mouse kidney using EL antibody (ABIN6132052, ABIN6140108, ABIN6140109 and ABIN6222942) at dilution of 1:200 (40x lens). Perform microwave antigen retrieval with 10 mM PBS buffer pH 7.2 before commencing with IHC staining protocol.

Please check the [product details page](#) for more images. Overall 4 images are available for ABIN6140108.