

Datasheet for ABIN6140110
anti-ELANE antibody (AA 30-267)



[Go to Product page](#)

7 Images

Overview

Quantity:	100 µL
Target:	ELANE
Binding Specificity:	AA 30-267
Reactivity:	Human
Host:	Rabbit
Clonality:	Polyclonal
Conjugate:	This ELANE antibody is un-conjugated
Application:	Western Blotting (WB), Immunofluorescence (IF)

Product Details

Immunogen:	Recombinant fusion protein containing a sequence corresponding to amino acids 30-267 of human Neutrophil Elastase (ELANE) (NP_001963.1).
Sequence:	IVGGRRARPH AWPFMVSLQL RGGHFCGATL IAPNFVMSAA HCVANVNVRA VRVVLGAHNL SRREPTRQVF AVQRIFENGY DPVNULLNDIV ILQLNGSATI NANVQVAQLP AQGRRLGNGV QCLAMGWLL GRNRGIASVL QELNVTVVTLS LCRRSNVCTL VRGRQAGVCF GDSGSPLVCN GLIHGIASFV RGGCASGLYP DAFAPVAQFV NWIDSIIQRS EDNPCPHPRD PDPASRTH
Isotype:	IgG
Cross-Reactivity:	Human, Mouse, Rat
Characteristics:	Polyclonal Antibodies
Purification:	Affinity purification

Target Details

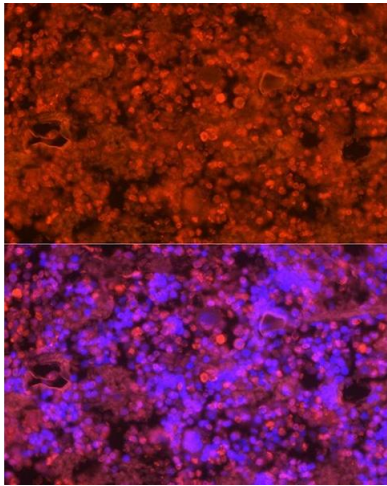
Target:	ELANE
Alternative Name:	ELANE (ELANE Products)
Background:	<p>Elastases form a subfamily of serine proteases that hydrolyze many proteins in addition to elastin. Humans have six elastase genes which encode structurally similar proteins. The encoded preproprotein is proteolytically processed to generate the active protease. Following activation, this protease hydrolyzes proteins within specialized neutrophil lysosomes, called azurophil granules, as well as proteins of the extracellular matrix. The enzyme may play a role in degenerative and inflammatory diseases through proteolysis of collagen-IV and elastin. This protein also degrades the outer membrane protein A (OmpA) of E. coli as well as the virulence factors of such bacteria as Shigella, Salmonella and Yersinia. Mutations in this gene are associated with cyclic neutropenia and severe congenital neutropenia (SCN). This gene is present in a gene cluster on chromosome 19.,ELANE,ELA2,GE,HLE,HNE,NE,PMN-E,SCN1,Signal Transduction,Cell Biology & Developmental Biology,Cytoskeleton,Extracellular Matrix,ELANE</p>
Molecular Weight:	28 kDa
Gene ID:	1991
UniProt:	P08246

Application Details

Application Notes:	WB,1:500 - 1:2000,IF,1:50 - 1:200
Comment:	HIGH QUALITY
Restrictions:	For Research Use only

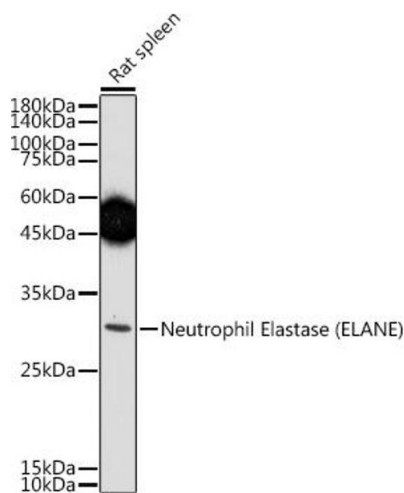
Handling

Format:	Liquid
Buffer:	PBS with 0.02 % sodium azide,50 % glycerol, pH 7.3.
Preservative:	Sodium azide
Precaution of Use:	This product contains Sodium azide: a POISONOUS AND HAZARDOUS SUBSTANCE which should be handled by trained staff only.
Storage:	-20 °C
Storage Comment:	Store at -20°C. Avoid freeze / thaw cycles.



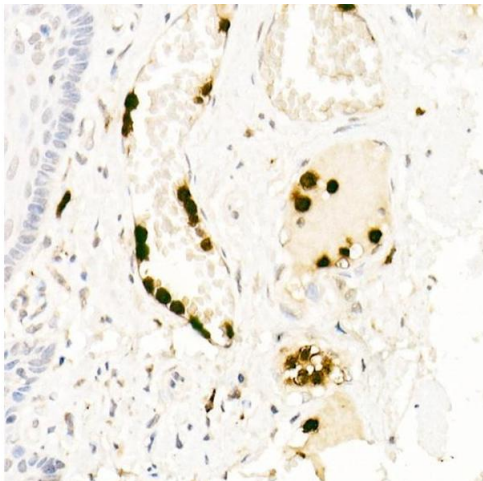
Immunofluorescence

Image 1. Immunofluorescence analysis of rat bone marrow cells using Neutrophil Elastase (ELANE) Rabbit pAb (ABIN6131604, ABIN6140110, ABIN6140111 and ABIN6216843) at dilution of 1:250 (40x lens). Blue: DAPI for nuclear staining.



Western Blotting

Image 2. Western blot analysis of extracts of Rat spleen, using Neutrophil Elastase (ELANE) antibody (ABIN6131604, ABIN6140110, ABIN6140111 and ABIN6216843) at 1:500 dilution. Secondary antibody: HRP Goat Anti-Rabbit IgG (H+L) (ABIN1684268 and ABIN3020597) at 1:10000 dilution. Lysates/proteins: 25 µg per lane. Blocking buffer: 3 % nonfat dry milk in TBST. Detection: ECL Enhanced Kit (RM00021). Exposure time: 180s.



Immunohistochemistry

Image 3. Immunohistochemistry of paraffin-embedded human esophagus using Neutrophil Elastase (ELANE) Rabbit pAb (ABIN6131604, ABIN6140110, ABIN6140111 and ABIN6216843) at dilution of 1:25 (40x lens). Perform high pressure antigen retrieval with 10 mM citrate buffer pH 6.0 before commencing with IHC staining protocol.

Please check the [product details page](#) for more images. Overall 7 images are available for ABIN6140110.