



[Go to Product page](#)

Datasheet for ABIN6140114
anti-ELAVL2 antibody (AA 1-100)

3 Images

Overview

Quantity:	100 µL
Target:	ELAVL2
Binding Specificity:	AA 1-100
Reactivity:	Human
Host:	Rabbit
Clonality:	Polyclonal
Conjugate:	This ELAVL2 antibody is un-conjugated
Application:	Western Blotting (WB), Immunohistochemistry (IHC)

Product Details

Immunogen:	A synthetic peptide corresponding to a sequence within amino acids 1-100 of human ELAVL2 (NP_004423.2).
Sequence:	METQLSNGPT CNNTANGPTT INNNCSSPVD SGNTEDSKTN LIVNYLPQNM TQEELKSLFG SIGEIESCKL VRDKITGQSL GYGfVNYIDP KDAEKAINTL
Isotype:	IgG
Cross-Reactivity:	Human, Mouse, Rat
Characteristics:	Polyclonal Antibodies
Purification:	Affinity purification

Target Details

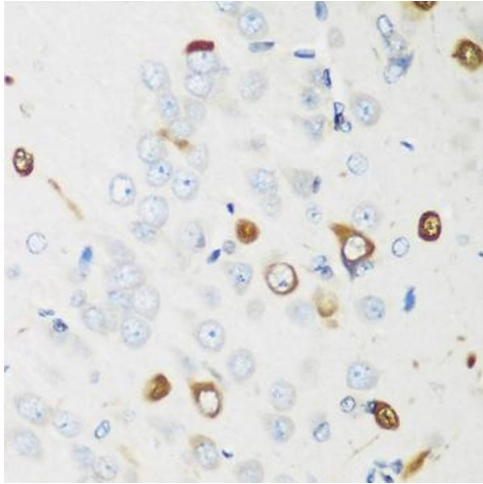
Target:	ELAVL2
Alternative Name:	ELAVL2 (ELAVL2 Products)
Background:	The protein encoded by this gene is a neural-specific RNA-binding protein that is known to bind to several 3' UTRs, including its own and also that of FOS and ID. The encoded protein may recognize a GAAA motif in the RNA. Three transcript variants encoding two different isoforms have been found for this gene.,ELAVL2,HEL-N1,HELN1,HUB,Epigenetics & Nuclear Signaling,RNA Binding,ELAVL2
Molecular Weight:	38 kDa/39 kDa
Gene ID:	1993
UniProt:	Q12926

Application Details

Application Notes:	WB,1:1000 - 1:2000,IHC,1:50 - 1:200
Comment:	HIGH QUALITY
Restrictions:	For Research Use only

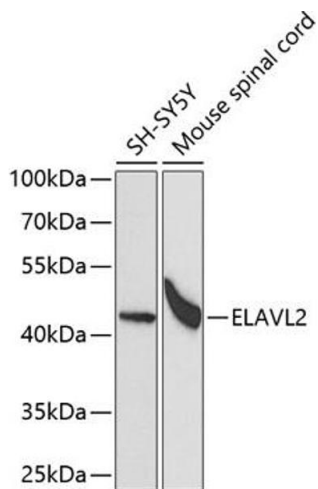
Handling

Format:	Liquid
Buffer:	PBS with 0.02 % sodium azide,50 % glycerol, pH 7.3.
Preservative:	Sodium azide
Precaution of Use:	This product contains Sodium azide: a POISONOUS AND HAZARDOUS SUBSTANCE which should be handled by trained staff only.
Storage:	-20 °C
Storage Comment:	Store at -20°C. Avoid freeze / thaw cycles.



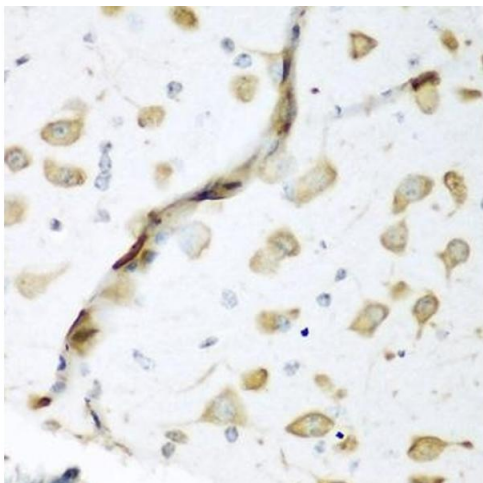
Immunohistochemistry

Image 1. Immunohistochemistry of paraffin-embedded rat brain using EL antibody (ABIN6134649, ABIN6140114, ABIN6140116 and ABIN6221621) at dilution of 1:200 (40x lens). Perform microwave antigen retrieval with 10 mM PBS buffer pH 7.2 before commencing with IHC staining protocol.



Western Blotting

Image 2. Western blot analysis of extracts of various cell lines, using EL antibody (ABIN6134649, ABIN6140114, ABIN6140116 and ABIN6221621) at 1:1000 dilution. Secondary antibody: HRP Goat Anti-Rabbit IgG (H+L) (ABIN1684268 and ABIN3020597) at 1:10000 dilution. Lysates/proteins: 25 µg per lane. Blocking buffer: 3 % nonfat dry milk in TBST. Detection: ECL Basic Kit (RM00020). Exposure time: 90s.



Immunohistochemistry

Image 3. Immunohistochemistry of paraffin-embedded mouse brain using EL antibody (ABIN6134649, ABIN6140114, ABIN6140116 and ABIN6221621) at dilution of 1:200 (40x lens). Perform microwave antigen retrieval with 10 mM PBS buffer pH 7.2 before commencing with IHC staining protocol.