

Datasheet for ABIN6140124
anti-ELF3 antibody (AA 1-280)[Go to Product page](#)

4 Images

Overview

Quantity:	100 µL
Target:	ELF3
Binding Specificity:	AA 1-280
Reactivity:	Human
Host:	Rabbit
Clonality:	Polyclonal
Conjugate:	This ELF3 antibody is un-conjugated
Application:	Western Blotting (WB), Immunoprecipitation (IP)

Product Details

Immunogen:	Recombinant fusion protein containing a sequence corresponding to amino acids 1-280 of human ESE1/ESE1/ELF3 (NP_004424.3).
Sequence:	MAATCEISNI FSNYFSAMYS SEDSTLASVP PAATFGADDL VLTLNPQMS LEGTEKASWL GEQPQFWSKT QVLDWISYQV EKNKYDASAI DFSRCDMDGA TLCNCALEEL RLVFGPLGDQ LHAQLRDLTS SSSDELSWII ELLEKDGMAF QEALDPGPFD QGSPFAQELL DDGQQASPYH PGSCGAGAPS PGSSDVSTAG TGASRSSHSS DSGGSDVDLD PTDGKLFPSD GFRDCKKGDP KHGKRKRGRP RKLSKEYWDC LEGKSKHAP RGTHLWEFIR
Isotype:	IgG
Cross-Reactivity:	Human, Mouse
Characteristics:	Polyclonal Antibodies
Purification:	Affinity purification

Target Details

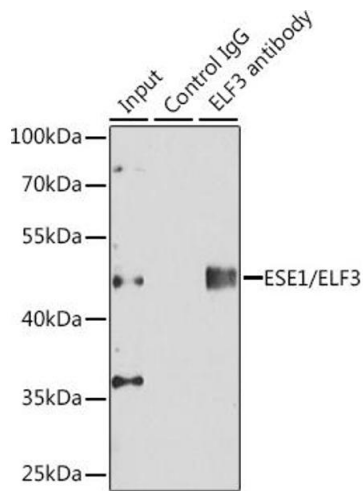
Target:	ELF3
Alternative Name:	ELF3 (ELF3 Products)
Background:	Transcriptional activator that binds and transactivates ETS sequences containing the consensus nucleotide core sequence GGA[AT]. Acts synergistically with POU2F3 to transactivate the SPRR2A promoter and with RUNX1 to transactivate the ANGPT1 promoter. Also transactivates collagenase, CCL20, CLND7, FLG, KRT8, NOS2, PTGS2, SPRR2B, TGFB2 and TGM3 promoters. Represses KRT4 promoter activity. Involved in mediating vascular inflammation. May play an important role in epithelial cell differentiation and tumorigenesis. May be a critical downstream effector of the ERBB2 signaling pathway. May be associated with mammary gland development and involution. Plays an important role in the regulation of transcription with TATA-less promoters in preimplantation embryos, which is essential in preimplantation development (By similarity.,ELF3,EPR-1,ERT,ESE-1,ESX,Epigenetics & Nuclear Signaling,Transcription Factors,ELF3
Molecular Weight:	39 kDa/41 kDa
Gene ID:	1999
UniProt:	P78545

Application Details

Application Notes:	WB,1:500 - 1:2000,IP,1:20 - 1:50
Restrictions:	For Research Use only

Handling

Format:	Liquid
Buffer:	PBS with 0.02 % sodium azide,50 % glycerol, pH 7.3.
Preservative:	Sodium azide
Precaution of Use:	This product contains Sodium azide: a POISONOUS AND HAZARDOUS SUBSTANCE which should be handled by trained staff only.
Storage:	-20 °C
Storage Comment:	Store at -20°C. Avoid freeze / thaw cycles.



Immunoprecipitation

Image 1. Immunoprecipitation analysis of 150 µg extracts of cells using 3 µg ESE1/ESE1/ELF3 antibody (ABIN6130346, ABIN6140124, ABIN6140126 and ABIN6217508). Western blot was performed from the immunoprecipitate using ESE1/ESE1/ELF3 antibody (ABIN6130346, ABIN6140124, ABIN6140126 and ABIN6217508) at a dilution of 1:500.____Detection: ECL Enhanced Kit (RM00021)._Exposure time: 30s.

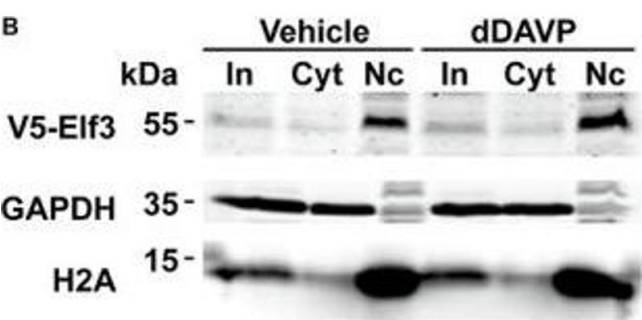
Western Blotting

Image 2. Elf3 overexpression enhanced basal and vasopressin-induced AQP2 promoter activity and transcription. (A) Expression of endogenous Elf3 isoform mRNA in the mpkCCD cells by RT-PCR and agarose gel electrophoresis analysis. The RPLP0 mRNA levels served loading control purposes. (B) Immunoblotting for Elf3 protein in the mpkCCD cells transfected with V5-tagged LacZ (β-galactosidase), V5-tagged Elf3 isoform 1, or V5-tagged Elf3 isoform 2 expression vector. β-actin staining served as a loading control. (C) Elf3 isoform 1. (D) Elf3 isoform 2. (E) AQP2 mRNA level in the mpkCCD cells transfected with LacZ, V5-tagged Elf3 isoform 1, or V5-tagged Elf3 isoform 2 expression vector. All cells were exposed to vehicle (Veh) or 0.1 nM dDAVP (AVP) for 8 h before mRNA measurements with quantitative RT-PCR. Values are means ± SE, adjusted for loading (RPLP0 mRNA levels) and standardized against the values in the control cells expressing LacZ under the vehicle conditions. Asterisk indicates significant difference (p < 0.05, t-test). (F) AQP2 mRNA ratios summarized from the experiments shown in (E). (G) AQP2 promoter activity assay in the mpkCCD cells expressing LacZ, Elf3 isoform 1, or Elf3 isoform 2 after exposed to vehicle or dDAVP. (H) AQP2 promoter activity ratios summarized from experiments shown in (G). - figure

provided by CiteAb. Source: PMID31681015

Western Blotting

Image 3. Vasopressin did not induce Elf3 nuclear translocation in the mpkCCD cells. (A) confocal immunofluorescence micrographs of mpkCCD cells transfected with the V5-tagged Elf3 isoform 1 expression vector and stimulated with dDAVP for 30 min. (B) Nucleus (Nc) vs. cytosol (Cyt) fractionation followed by immunoblotting for V5-tagged Elf3 in the mpkCCD cells under vehicle or dDAVP-stimulated conditions. GAPDH and histone H2A were stained as a cytosol and a nucleus marker, respectively. In, input i.e., cell lysate. - figure provided by CiteAb. Source: PMID31681015



Please check the [product details page](#) for more images. Overall 4 images are available for ABIN6140124.