



[Go to Product page](#)

Datasheet for ABIN6140142

## anti-ELP3/KAT9 antibody (AA 358-547)

### 3 Images

#### Overview

Quantity:	100 µL
Target:	ELP3/KAT9 (ELP3)
Binding Specificity:	AA 358-547
Reactivity:	Human
Host:	Rabbit
Clonality:	Polyclonal
Conjugate:	This ELP3/KAT9 antibody is un-conjugated
Application:	Western Blotting (WB), Immunohistochemistry (IHC)

#### Product Details

Immunogen:	Recombinant fusion protein containing a sequence corresponding to amino acids 358-547 of human KAT9/KAT9/Elp3 (NP_060561.3).
Sequence:	PWTRVYRVQR DIPMPLVSSG VEHGNLRELA LARMKDLGIQ CRDVRTREVG IQEIHKKVRP YQVELVRRDY VANGGWETFL SYEDPDQDIL IGLLRKCS EETFRFELGG GVSIVRELHV YGSVVPVSSR DPTKFQHQGF GMLLMEEAER IAREEHGSGK IAVISGVGTR NYRKGIGYRL QGPYMKMLK
Isotype:	IgG
Cross-Reactivity:	Human, Mouse, Rat
Characteristics:	Polyclonal Antibodies
Purification:	Affinity purification

## Target Details

---

Target:	ELP3/KAT9 (ELP3)
Alternative Name:	ELP3 ( <a href="#">ELP3 Products</a> )
Background:	ELP3 is the catalytic subunit of the histone acetyltransferase elongator complex, which contributes to transcript elongation and also regulates the maturation of projection neurons (Creppe et al., 2009 [PubMed 19185337]).[supplied by OMIM, Apr 2009],ELP3,KAT9,Epigenetics & Nuclear Signaling,Chromatin Modifying Enzymes,Acetylation,ELP3
Molecular Weight:	49 kDa/52 kDa/60 kDa/62 kDa
Gene ID:	55140
UniProt:	<a href="#">Q9H9T3</a>

## Application Details

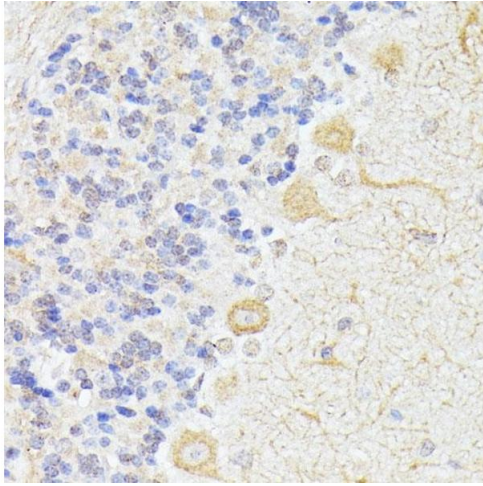
---

Application Notes:	WB,1:500 - 1:2000,IHC,1:50 - 1:200
Restrictions:	For Research Use only

## Handling

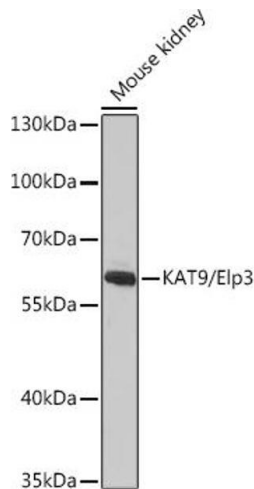
---

Format:	Liquid
Buffer:	PBS with 0.02 % sodium azide,50 % glycerol, pH 7.3.
Preservative:	Sodium azide
Precaution of Use:	This product contains Sodium azide: a POISONOUS AND HAZARDOUS SUBSTANCE which should be handled by trained staff only.
Storage:	-20 °C
Storage Comment:	Store at -20°C. Avoid freeze / thaw cycles.



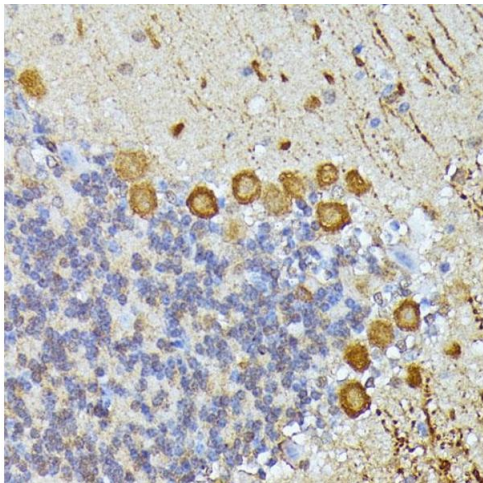
### Immunohistochemistry

**Image 1.** Immunohistochemistry of paraffin-embedded rat cerebellum using K/K/Elp3 antibody (ABIN6130883, ABIN6140142, ABIN6140143 and ABIN6225217) at dilution of 1:100 (40x lens). Perform microwave antigen retrieval with 10 mM PBS buffer pH 7.2 before commencing with IHC staining protocol.



### Western Blotting

**Image 2.** Western blot analysis of extracts of Mouse kidney, using K/K/Elp3 antibody (ABIN6130883, ABIN6140142, ABIN6140143 and ABIN6225217) at 1:1000 dilution. Secondary antibody: HRP Goat Anti-Rabbit IgG (H+L) (ABIN1684268 and ABIN3020597) at 1:10000 dilution. Lysates/proteins: 25 µg per lane. Blocking buffer: 3 % nonfat dry milk in TBST. Detection: ECL Basic Kit (RM00020). Exposure time: 120s.



### Immunohistochemistry

**Image 3.** Immunohistochemistry of paraffin-embedded mouse cerebellum using K/K/Elp3 antibody (ABIN6130883, ABIN6140142, ABIN6140143 and ABIN6225217) at dilution of 1:100 (40x lens). Perform microwave antigen retrieval with 10 mM PBS buffer pH 7.2 before commencing with IHC staining protocol.