



[Go to Product page](#)

Datasheet for ABIN6140146  
**anti-KIAA0090 antibody (AA 885-965)**

1 Image

Overview

Quantity:	100 µL
Target:	KIAA0090
Binding Specificity:	AA 885-965
Reactivity:	Human
Host:	Rabbit
Clonality:	Polyclonal
Conjugate:	This KIAA0090 antibody is un-conjugated
Application:	Western Blotting (WB), Immunohistochemistry (IHC)

Product Details

Immunogen:	Recombinant fusion protein containing a sequence corresponding to amino acids 885-965 of human EMC1 (NP_055862.1).
Sequence:	IPTEQSREEN LIPYSPDVQI HAERFINYNQ TVSRMRGIYT APSGLESTCL VWAYGLDIYQ TRVYPSKQFD VLKDDYDYVL I
Isotype:	IgG
Cross-Reactivity:	Human, Mouse, Rat
Characteristics:	Polyclonal Antibodies
Purification:	Affinity purification

## Target Details

---

Target:	KIAA0090
Alternative Name:	EMC1 ( <a href="#">KIAA0090 Products</a> )
Background:	This gene encodes a single-pass type I transmembrane protein, which is a subunit of the endoplasmic reticulum membrane protein complex (EMC). Multiple alternatively spliced transcript variants encoding different isoforms have been found for this gene.,EMC1,CAVIPMR,KIAA0090,Cell Biology & Developmental Biology,EMC1
Molecular Weight:	109 kDa/111 kDa
Gene ID:	23065
UniProt:	<a href="#">Q8N766</a>
Pathways:	<a href="#">SARS-CoV-2 Protein Interactome</a>

## Application Details

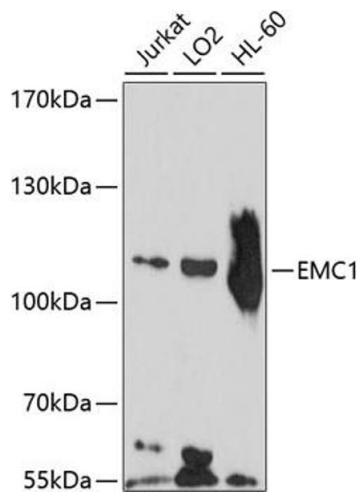
---

Application Notes:	WB,1:500 - 1:2000,IHC,1:100 - 1:200
Comment:	HIGH QUALITY
Restrictions:	For Research Use only

## Handling

---

Format:	Liquid
Buffer:	PBS with 0.02 % sodium azide,50 % glycerol, pH 7.3.
Preservative:	Sodium azide
Precaution of Use:	This product contains Sodium azide: a POISONOUS AND HAZARDOUS SUBSTANCE which should be handled by trained staff only.
Storage:	-20 °C
Storage Comment:	Store at -20°C. Avoid freeze / thaw cycles.



### Western Blotting

**Image 1.** Western blot analysis of extracts of various cell lines, using EMC1 antibody (ABIN6132155, ABIN6140146, ABIN6140147 and ABIN6214486) at 1:1000 dilution. Secondary antibody: HRP Goat Anti-Rabbit IgG (H+L) (ABIN1684268 and ABIN3020597) at 1:10000 dilution. Lysates/proteins: 25 µg per lane. Blocking buffer: 3 % nonfat dry milk in TBST. Detection: ECL Basic Kit (RM00020). Exposure time: 90s.