

Datasheet for ABIN6140172
anti-ENO2/NSE antibody (AA 195-434)



[Go to Product page](#)

3 Images

Overview

Quantity:	100 µL
Target:	ENO2/NSE (ENO2)
Binding Specificity:	AA 195-434
Reactivity:	Human
Host:	Rabbit
Clonality:	Polyclonal
Conjugate:	This ENO2/NSE antibody is un-conjugated
Application:	Western Blotting (WB), Immunofluorescence (IF)

Product Details

Immunogen:	Recombinant fusion protein containing a sequence corresponding to amino acids 195-434 of human ENO2 (NP_001966.1).
Sequence:	VIKDKYGGKA TNVGDEGGFA PNILENSEAL ELVKEAIDKA GYTEKIVIGM DVAASEFYRD GKYDLDFKSP TDPSRYITGD QLGALYQDFV RDYPVVSIED PFDQDDWAAW SKFTANVGIQ IVGDDLTVTN PKRIERAVEE KACNCLLLKV NQIGSVTEAI QACKLAQENG WGVMVSHRSG ETEDTFIADL VVGLCTGQIK TGAPCRSERL AKYNQLMRIE EELGDEARFA GHNFRNPSVL
Isotype:	IgG
Cross-Reactivity:	Human, Mouse, Rat
Characteristics:	Polyclonal Antibodies
Purification:	Affinity purification

Target Details

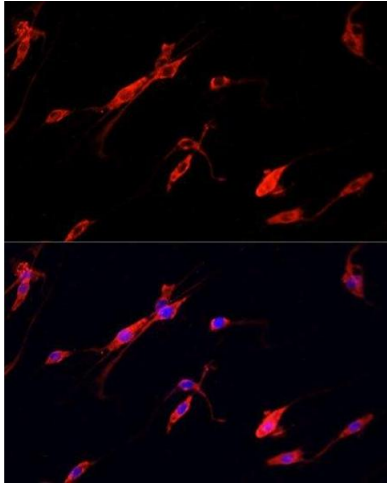
Target:	ENO2/NSE (ENO2)
Alternative Name:	ENO2 (ENO2 Products)
Background:	This gene encodes one of the three enolase isoenzymes found in mammals. This isoenzyme, a homodimer, is found in mature neurons and cells of neuronal origin. A switch from alpha enolase to gamma enolase occurs in neural tissue during development in rats and primates.,ENO2,HEL-S-279,NSE,enolase 2,Cancer,Tumor biomarkers,Cell Biology & Developmental Biology,Endocrine & Metabolism,Carbohydrate metabolism,Neuroscience,Cell Type Marker,Stem Cells,Neuron marker,ENO2
Molecular Weight:	42 kDa/47 kDa
Gene ID:	2026
UniProt:	P09104

Application Details

Application Notes:	WB,1:500 - 1:2000,IF,1:50 - 1:200
Comment:	HIGH QUALITY
Restrictions:	For Research Use only

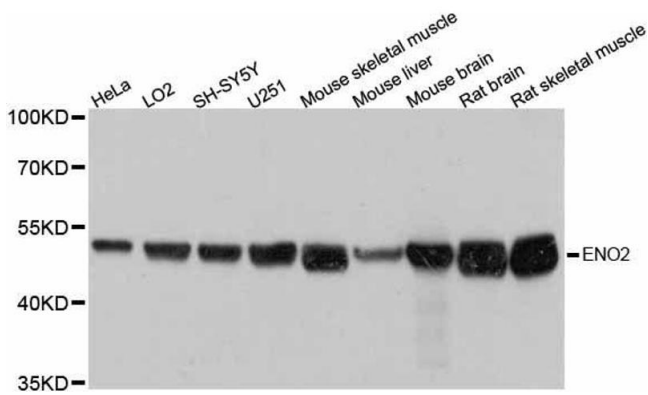
Handling

Format:	Liquid
Buffer:	PBS with 0.02 % sodium azide,50 % glycerol, pH 7.3.
Preservative:	Sodium azide
Precaution of Use:	This product contains Sodium azide: a POISONOUS AND HAZARDOUS SUBSTANCE which should be handled by trained staff only.
Storage:	-20 °C
Storage Comment:	Store at -20°C. Avoid freeze / thaw cycles.



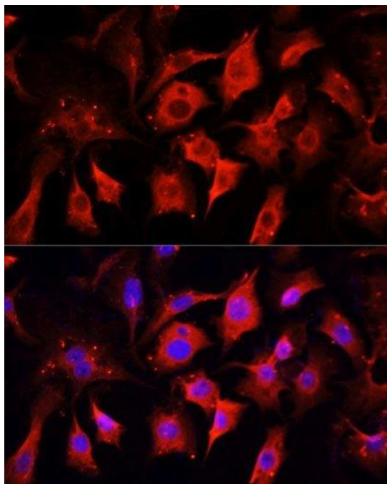
Immunofluorescence

Image 1. Immunofluorescence analysis of PC12 cells using ENO2 antibody.



Western Blotting

Image 2. Western blot analysis of extracts of various cell lines, using ENO2 antibody.



Immunofluorescence

Image 3. Immunofluorescence analysis of NIH/3T3 cells using ENO2 antibody.