

Datasheet for ABIN6140179
anti-ENPEP antibody (AA 850-950)



[Go to Product page](#)

1 Image

Overview

| | |
|----------------------|--------------------------------------|
| Quantity: | 100 µL |
| Target: | ENPEP |
| Binding Specificity: | AA 850-950 |
| Reactivity: | Human |
| Host: | Rabbit |
| Clonality: | Polyclonal |
| Conjugate: | This ENPEP antibody is un-conjugated |
| Application: | Western Blotting (WB) |

Product Details

| | |
|-------------------|--|
| Immunogen: | A synthetic peptide corresponding to a sequence within amino acids 850-950 of human ENPEP (NP_001968.3). |
| Sequence: | VFTVIRYISY NSYGKNMAWN WIQLNWDYLV NRYTLNNRNL GRIVTIAEPF NTELQLWQME SFFAKYPQAG AGEKPREQVL ETVKNNIEWL KQHRNTIREW F |
| Isotype: | IgG |
| Cross-Reactivity: | Human, Mouse |
| Characteristics: | Polyclonal Antibodies |
| Purification: | Affinity purification |

Target Details

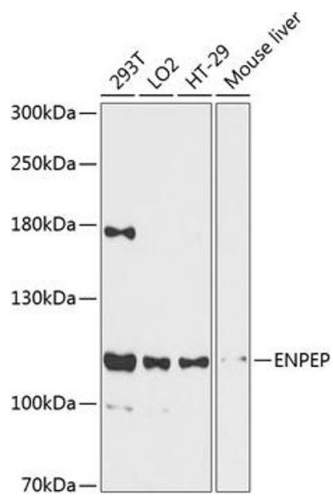
| | |
|-------------------|--|
| Target: | ENPEP |
| Alternative Name: | ENPEP (ENPEP Products) |
| Background: | Regulates central hypertension through its calcium-modulated preference to cleave N-terminal acidic residues from peptides such as angiotensin II.,ENPEP,APA,CD249,gp160,Immunology & Inflammation,CD markers,Stem Cells,Hematopoietic Progenitors,Cardiovascular,Angiogenesis,ENPEP |
| Molecular Weight: | 109 kDa |
| Gene ID: | 2028 |
| UniProt: | Q07075 |
| Pathways: | Peptide Hormone Metabolism, Regulation of Systemic Arterial Blood Pressure by Hormones |

Application Details

| | |
|--------------------|-----------------------|
| Application Notes: | WB,1:500 - 1:2000 |
| Comment: | HIGH QUALITY |
| Restrictions: | For Research Use only |

Handling

| | |
|--------------------|--|
| Format: | Liquid |
| Buffer: | PBS with 0.02 % sodium azide,50 % glycerol, pH 7.3. |
| Preservative: | Sodium azide |
| Precaution of Use: | This product contains Sodium azide: a POISONOUS AND HAZARDOUS SUBSTANCE which should be handled by trained staff only. |
| Storage: | -20 °C |
| Storage Comment: | Store at -20°C. Avoid freeze / thaw cycles. |



Western Blotting

Image 1. Western blot analysis of extracts of various cell lines, using ENPEP antibody at 1:3000 dilution. Secondary antibody: HRP Goat Anti-Rabbit IgG (H+L) (ABIN1684268 and ABIN3020597) at 1:10000 dilution. Lysates/proteins: 25 µg per lane. Blocking buffer: 3% nonfat dry milk in TBST. Detection: ECL Basic Kit (RM00020). Exposure time: 90s.