

Datasheet for ABIN6140180  
**anti-ENPEP antibody (AA 708-957)**



[Go to Product page](#)

4 Images

## Overview

Quantity:	100 µL
Target:	ENPEP
Binding Specificity:	AA 708-957
Reactivity:	Human
Host:	Rabbit
Clonality:	Polyclonal
Conjugate:	This ENPEP antibody is un-conjugated
Application:	Western Blotting (WB), Immunohistochemistry (IHC)

## Product Details

Immunogen:	Recombinant fusion protein containing a sequence corresponding to amino acids 708-957 of human ENPEP (NP_001968.3).
Sequence:	DDKELYPMIE EYFQGQVKPI ADSLGWNDAG DHVTKLLRSS VLGFAKMGD REALNNASSL FEQWLNGTVS LPVNLRLLVY RYGMQNSGNE ISWNYTLEQY QKTSLAQEKE KLLYGLASVK NVTLLSRYLD LLKDTNLIKT QDVFTVIRYI SYNSYGKNMA WNWIQLNWDY LVNRYTLNNR NLGRIVTIAE PFNTELQLWQ MESFFAKYPQ AGAGEKPREQ VLETVKNNIE WLKQHRNTIR EWWFFNLLESG
Isotype:	IgG
Cross-Reactivity:	Human, Mouse, Rat
Characteristics:	Polyclonal Antibodies
Purification:	Affinity purification

## Target Details

---

Target:	ENPEP
Alternative Name:	ENPEP ( <a href="#">ENPEP Products</a> )
Background:	Regulates central hypertension through its calcium-modulated preference to cleave N-terminal acidic residues from peptides such as angiotensin II.,ENPEP,APA,CD249,gp160,Immunology & Inflammation,CD markers,Stem Cells,Hematopoietic Progenitors,Cardiovascular,Angiogenesis,ENPEP
Molecular Weight:	109 kDa
Gene ID:	2028
UniProt:	<a href="#">Q07075</a>
Pathways:	<a href="#">Peptide Hormone Metabolism, Regulation of Systemic Arterial Blood Pressure by Hormones</a>

## Application Details

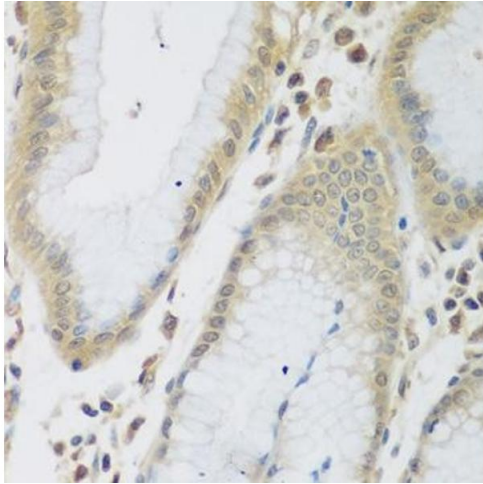
---

Application Notes:	WB,1:500 - 1:2000,IHC,1:50 - 1:200
Restrictions:	For Research Use only

## Handling

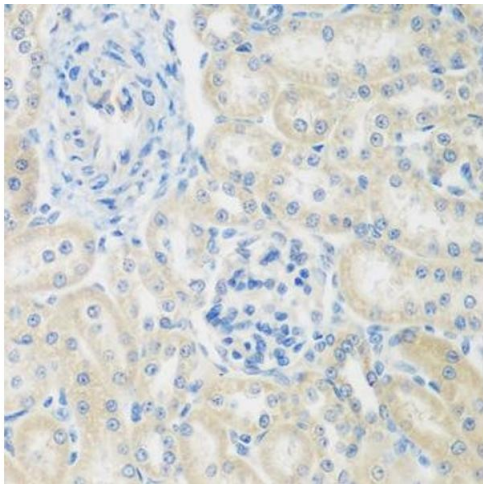
---

Format:	Liquid
Buffer:	PBS with 0.02 % sodium azide,50 % glycerol, pH 7.3.
Preservative:	Sodium azide
Precaution of Use:	This product contains Sodium azide: a POISONOUS AND HAZARDOUS SUBSTANCE which should be handled by trained staff only.
Storage:	-20 °C
Storage Comment:	Store at -20°C. Avoid freeze / thaw cycles.



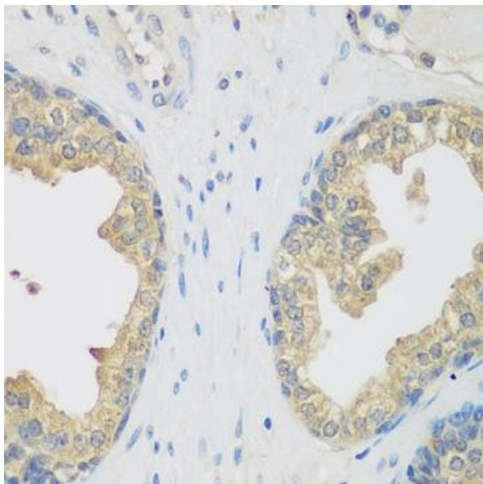
#### Immunohistochemistry

**Image 1.** Immunohistochemistry of paraffin-embedded human stomach using ENPEP antibody at dilution of 1:200 (40x lens). Perform microwave antigen retrieval with 10 mM PBS buffer pH 7.2 before commencing with IHC staining protocol.



#### Immunohistochemistry

**Image 2.** Immunohistochemistry of paraffin-embedded rat kidney using ENPEP antibody at dilution of 1:200 (40x lens). Perform microwave antigen retrieval with 10 mM PBS buffer pH 7.2 before commencing with IHC staining protocol.



#### Immunohistochemistry

**Image 3.** Immunohistochemistry of paraffin-embedded human prostate using ENPEP antibody at dilution of 1:200 (40x lens). Perform microwave antigen retrieval with 10 mM PBS buffer pH 7.2 before commencing with IHC staining protocol.

Please check the [product details page](#) for more images. Overall 4 images are available for ABIN6140180.