

Datasheet for ABIN6140193

anti-p300 antibody (AA 1-270)

6 Images

1 Publication



[Go to Product page](#)

Overview

Quantity:	100 µL
Target:	p300 (EP300)
Binding Specificity:	AA 1-270
Reactivity:	Human
Host:	Rabbit
Clonality:	Polyclonal
Conjugate:	This p300 antibody is un-conjugated
Application:	Western Blotting (WB), Immunohistochemistry (IHC), Immunofluorescence (IF)

Product Details

Immunogen:	Recombinant fusion protein containing a sequence corresponding to amino acids 1-270 of human EP300 (NP_001420.2).
Sequence:	MAENVVEPGP PSAKRPKLSS PALSASASDG TDFGSLFDLE HDLPDELINS TELGLTNGGD INQLQTSLSGM VQDAASKHKQ LSELLRSGSS PNLNMGVGGP GQVMASQAQQ SSPGLGLINS MVKSPMTQAG LTSPNMGMGMT SGPNQGPTQS TGMMNSPVNQ PAMGMNTGMN AGMNPGLAA GNGQGIMPNQ VMNGSIGAGR GRQNMQYPNP GMGSAGNLLT EPLQQGSPQM GGQTGLRGPQ PLKMGMMNNP NPYGSPYTQN PGQQIGASGL
Isotype:	IgG
Cross-Reactivity:	Human, Mouse, Rat
Characteristics:	Polyclonal Antibodies
Purification:	Affinity purification

Target Details

Target:	p300 (EP300)
Alternative Name:	EP300 (EP300 Products)
Background:	<p>This gene encodes the adenovirus E1A-associated cellular p300 transcriptional co-activator protein. It functions as histone acetyltransferase that regulates transcription via chromatin remodeling and is important in the processes of cell proliferation and differentiation. It mediates cAMP-gene regulation by binding specifically to phosphorylated CREB protein. This gene has also been identified as a co-activator of HIF1A (hypoxia-inducible factor 1 alpha), and thus plays a role in the stimulation of hypoxia-induced genes such as VEGF. Defects in this gene are a cause of Rubinstein-Taybi syndrome and may also play a role in epithelial cancer.,EP300,KAT3B,RSTS2,p300,Epigenetics & Nuclear Signaling,Chromatin Modifying Enzymes,Acetylation,Transcription Factors,Nuclear Receptor Signaling,Cancer,Tumor suppressors,Signal Transduction,Cell Biology & Developmental Biology,Apoptosis,Cell Cycle,G2/M DNA Damage Checkpoint,Notch Signaling Pathway,Endocrine & Metabolism,Mitochondrial metabolism,Endocrine and metabolic diseases,Obesity,Immunology & Inflammation,NF-kB Signaling Pathway,Neuroscience,Neurodegenerative Diseases,Stem Cells,Cardiovascular,Angiogenesis,EP300</p>
Molecular Weight:	264 kDa
Gene ID:	2033
UniProt:	Q09472
Pathways:	p53 Signaling , Notch Signaling , Interferon-gamma Pathway , Intracellular Steroid Hormone Receptor Signaling Pathway , Regulation of Intracellular Steroid Hormone Receptor Signaling , Regulation of Lipid Metabolism by PPARalpha , Regulation of Muscle Cell Differentiation , Regulation of Cell Size

Application Details

Application Notes:	WB,1:500 - 1:2000,IHC,1:50 - 1:200,IF,1:50 - 1:200
Restrictions:	For Research Use only

Handling

Format:	Liquid
Buffer:	PBS with 0.02 % sodium azide,50 % glycerol, pH 7.3.
Preservative:	Sodium azide

Handling

Precaution of Use: This product contains Sodium azide: a POISONOUS AND HAZARDOUS SUBSTANCE which should be handled by trained staff only.

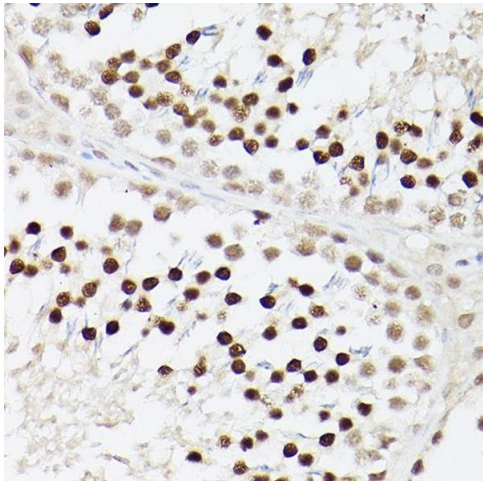
Storage: -20 °C

Storage Comment: Store at -20°C. Avoid freeze / thaw cycles.

Publications

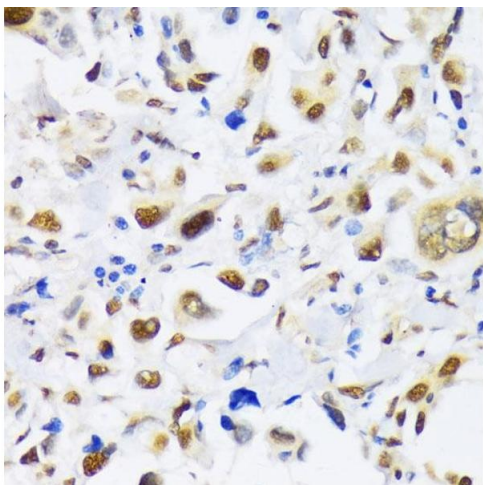
Product cited in: Dong, Wang, Kao, Diaz, Tasset, Kaushik, Thiruthuvanathan, Zintiridou, Nieves, Dzieciatkowska, Reisz, Gavathiotis, DAlessandro, Will, Cuervo: "Chaperone-mediated autophagy sustains haematopoietic stem-cell function." in: **Nature**, Vol. 591, Issue 7848, pp. 117-123, (2021) ([PubMed](#)).

Images



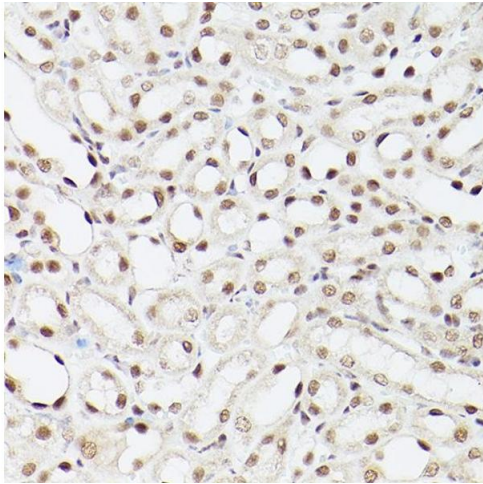
Immunohistochemistry

Image 1. Immunohistochemistry of paraffin-embedded Rat testis using EP300 antibody (ABIN6127823, ABIN6140193, ABIN6140194 and ABIN6216844) at dilution of 1:100 (40x lens). Perform high pressure antigen retrieval with 10 mM citrate buffer pH 6.0 before commencing with IHC staining protocol.



Immunohistochemistry

Image 2. Immunohistochemistry of paraffin-embedded human lung cancer using EP300 antibody (ABIN6127823, ABIN6140193, ABIN6140194 and ABIN6216844) at dilution of 1:100 (40x lens). Perform microwave antigen retrieval with 10 mM PBS buffer pH 7.2 before commencing with IHC staining protocol.



Immunohistochemistry

Image 3. Immunohistochemistry of paraffin-embedded Mouse kidney using EP300 antibody (ABIN6127823, ABIN6140193, ABIN6140194 and ABIN6216844) at dilution of 1:100 (40x lens). Perform high pressure antigen retrieval with 10 mM citrate buffer pH 6.0 before commencing with IHC staining protocol.

Please check the [product details page](#) for more images. Overall 6 images are available for ABIN6140193.