

Datasheet for ABIN6140210
anti-EPH Receptor A2 antibody (AA 847-976)

3 Images

[Go to Product page](#)

Overview

Quantity:	100 µL
Target:	EPH Receptor A2 (EPHA2)
Binding Specificity:	AA 847-976
Reactivity:	Human
Host:	Rabbit
Clonality:	Polyclonal
Conjugate:	This EPH Receptor A2 antibody is un-conjugated
Application:	Western Blotting (WB)

Product Details

Immunogen:	Recombinant fusion protein containing a sequence corresponding to amino acids 847-976 of human EPHA2 (NP_004422.2).
Sequence:	YQLMMQCWQQ ERARRPKFAD IVSILDKLIR APDSLKTLAD FDPVRSIRLP STSGSEGVPF RTVSEWLESI KMQQYTEHFM AAGYTAIEKV VQMTNDDIKR IGVRLPGHQK RIAYSLGLK DQVNTVGPI
Isotype:	IgG
Cross-Reactivity:	Human, Mouse, Rat
Characteristics:	Polyclonal Antibodies
Purification:	Affinity purification

Target Details

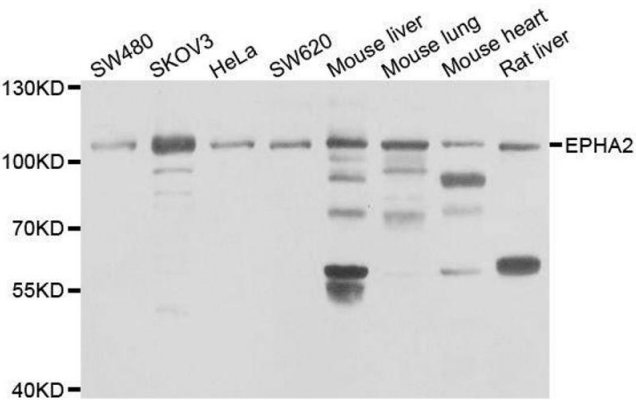
Target:	EPH Receptor A2 (EPHA2)
Alternative Name:	EPHA2 (EPHA2 Products)
Background:	<p>This gene belongs to the ephrin receptor subfamily of the protein-tyrosine kinase family. EPH and EPH-related receptors have been implicated in mediating developmental events, particularly in the nervous system. Receptors in the EPH subfamily typically have a single kinase domain and an extracellular region containing a Cys-rich domain and 2 fibronectin type III repeats. The ephrin receptors are divided into 2 groups based on the similarity of their extracellular domain sequences and their affinities for binding ephrin-A and ephrin-B ligands. This gene encodes a protein that binds ephrin-A ligands. Mutations in this gene are the cause of certain genetically-related cataract disorders.,ARCC2,CTPA,CTPP1,CTRCT6,ECK,EPHA2,Signal Transduction,Kinase,Tyrosine kinases,Neuroscience,Cell Type Marker,Cardiovascular,Angiogenesis,Neuron marker,Growth Cone,EPHA2</p>
Molecular Weight:	54 kDa/108 kDa
Gene ID:	1969
UniProt:	P29317
Pathways:	RTK Signaling

Application Details

Application Notes:	WB,1:500 - 1:2000
Comment:	HIGH QUALITY
Restrictions:	For Research Use only

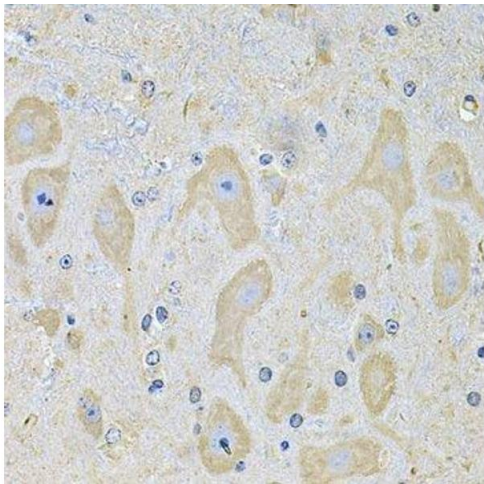
Handling

Format:	Liquid
Buffer:	PBS with 0.02 % sodium azide,50 % glycerol, pH 7.3.
Preservative:	Sodium azide
Precaution of Use:	This product contains Sodium azide: a POISONOUS AND HAZARDOUS SUBSTANCE which should be handled by trained staff only.
Storage:	-20 °C
Storage Comment:	Store at -20°C. Avoid freeze / thaw cycles.



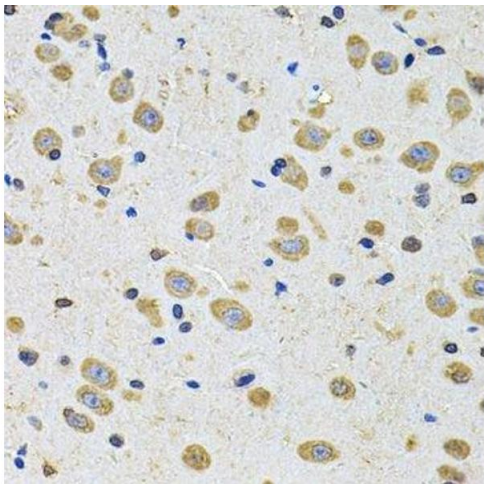
Western Blotting

Image 1. Western blot analysis of extracts of various cell lines, using EPHA2 antibody.



Immunohistochemistry (Paraffin-embedded Sections)

Image 2. Immunohistochemistry of paraffin-embedded mouse brain using EPHA2 Antibody.



Immunohistochemistry (Paraffin-embedded Sections)

Image 3. Immunohistochemistry of paraffin-embedded rat brain using EPHA2 Antibody.