

Datasheet for ABIN6140213  
**anti-EPH Receptor A3 antibody (AA 400-545)**[Go to Product page](#)

## 1 Image

## Overview

Quantity:	100 µL
Target:	EPH Receptor A3 (EPHA3)
Binding Specificity:	AA 400-545
Reactivity:	Human
Host:	Rabbit
Clonality:	Polyclonal
Conjugate:	This EPH Receptor A3 antibody is un-conjugated
Application:	Western Blotting (WB)

## Product Details

Immunogen:	Recombinant fusion protein containing a sequence corresponding to amino acids 400-545 of human EPHA3 (NP_005224.2).
Sequence:	LAHTNYTFEI DAVNGVSELS SPPRQFAAVS ITTNQAAPSP VLTIKKDRTS RNSISLSWQE PEHPNGIILD YEVKYYEKQE QETSYTILRA RGTNVTISSL KPDTIYVFQI RARTAAGYGT NSRKFEFETS PDSFSISGES SQVVM
Isotype:	IgG
Cross-Reactivity:	Human, Mouse, Rat
Characteristics:	Polyclonal Antibodies
Purification:	Affinity purification

## Target Details

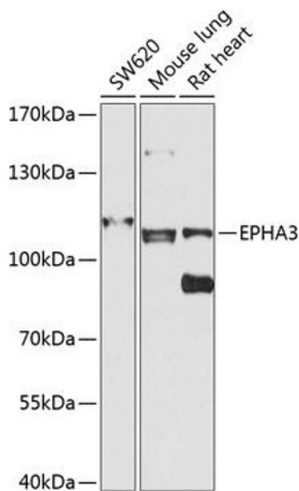
Target:	EPH Receptor A3 (EPHA3)
Alternative Name:	EPHA3 ( <a href="#">EPHA3 Products</a> )
Background:	<p>This gene belongs to the ephrin receptor subfamily of the protein-tyrosine kinase family. EPH and EPH-related receptors have been implicated in mediating developmental events, particularly in the nervous system. Receptors in the EPH subfamily typically have a single kinase domain and an extracellular region containing a Cys-rich domain and 2 fibronectin type III repeats. The ephrin receptors are divided into 2 groups based on the similarity of their extracellular domain sequences and their affinities for binding ephrin-A and ephrin-B ligands. This gene encodes a protein that binds ephrin-A ligands. Two alternatively spliced transcript variants have been described for this gene.,EK4,ETK,HEK,ETK1,HEK4,TYRO4,EPHA3,Signal Transduction,Kinase,Tyrosine kinases,Neuroscience,Cell Type Marker,Cardiovascular,Angiogenesis,Neuron marker,Growth Cone,EPHA3</p>
Molecular Weight:	60 kDa/110 kDa
Gene ID:	2042
UniProt:	<a href="#">P29320</a>
Pathways:	<a href="#">RTK Signaling</a> , <a href="#">Regulation of Cell Size</a>

## Application Details

Application Notes:	WB,1:500 - 1:2000
Comment:	HIGH QUALITY
Restrictions:	For Research Use only

## Handling

Format:	Liquid
Buffer:	PBS with 0.02 % sodium azide,50 % glycerol, pH 7.3.
Preservative:	Sodium azide
Precaution of Use:	This product contains Sodium azide: a POISONOUS AND HAZARDOUS SUBSTANCE which should be handled by trained staff only.
Storage:	-20 °C
Storage Comment:	Store at -20°C. Avoid freeze / thaw cycles.



### Western Blotting

**Image 1.** Western blot analysis of extracts of various cell lines, using EPH antibody (ABIN6131627, ABIN6140213, ABIN6140214 and ABIN6224468) at 1:1000 dilution. Secondary antibody: HRP Goat Anti-Rabbit IgG (H+L) (ABIN1684268 and ABIN3020597) at 1:10000 dilution. Lysates/proteins: 25 µg per lane. Blocking buffer: 3 % nonfat dry milk in TBST. Detection: ECL Basic Kit (RM00020). Exposure time: 30s.