



Datasheet for ABIN6140215
anti-EPH Receptor A4 antibody (AA 887-986)



[Go to Product page](#)

2 Images

Overview

Quantity:	100 µL
Target:	EPH Receptor A4 (EPHA4)
Binding Specificity:	AA 887-986
Reactivity:	Human
Host:	Rabbit
Clonality:	Polyclonal
Conjugate:	This EPH Receptor A4 antibody is un-conjugated
Application:	Western Blotting (WB), Immunofluorescence (IF)

Product Details

Immunogen:	Recombinant fusion protein containing a sequence corresponding to amino acids 887-986 of human EPHA4 (NP_004429.1).
Sequence:	SLKRTGTESS RPNTALLDPS SPEFSAVVSV GDWLQAIKMD RYKDNFTAAG YTTLEAVVHV NQEDLARIGI TAITHQNKIL SSVQAMRTQM QQMHGMRMPV
Isotype:	IgG
Cross-Reactivity:	Human, Mouse, Rat
Characteristics:	Polyclonal Antibodies
Purification:	Affinity purification

Target Details

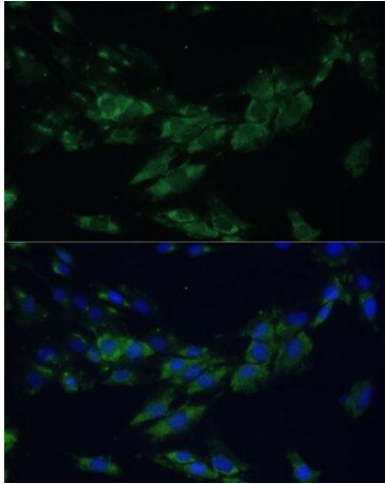
Target:	EPH Receptor A4 (EPHA4)
Alternative Name:	EPHA4 (EPHA4 Products)
Background:	<p>This gene belongs to the ephrin receptor subfamily of the protein-tyrosine kinase family. EPH and EPH-related receptors have been implicated in mediating developmental events, particularly in the nervous system. Receptors in the EPH subfamily typically have a single kinase domain and an extracellular region containing a Cys-rich domain and 2 fibronectin type III repeats. The ephrin receptors are divided into 2 groups based on the similarity of their extracellular domain sequences and their affinities for binding ephrin-A and ephrin-B ligands. Multiple transcript variants encoding different isoforms have been found for this gene.,EPHA4,HEK8,SEK,TYRO1,Signal Transduction,Kinase,Tyrosine kinases,Neuroscience,Cell Type Marker,Cardiovascular,Angiogenesis,Neuron marker,Growth Cone,EPHA4</p>
Molecular Weight:	104 kDa/109 kDa
Gene ID:	2043
UniProt:	P54764
Pathways:	RTK Signaling

Application Details

Application Notes:	WB,1:500 - 1:2000,IF,1:50 - 1:200
Comment:	HIGH QUALITY
Restrictions:	For Research Use only

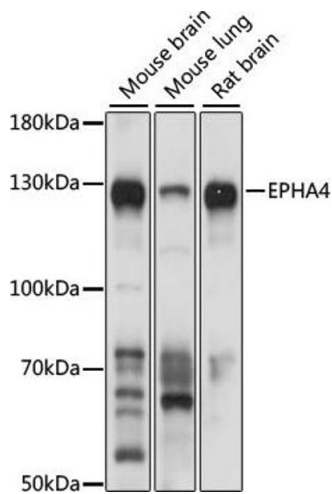
Handling

Format:	Liquid
Buffer:	PBS with 0.02 % sodium azide,50 % glycerol, pH 7.3.
Preservative:	Sodium azide
Precaution of Use:	This product contains Sodium azide: a POISONOUS AND HAZARDOUS SUBSTANCE which should be handled by trained staff only.
Storage:	-20 °C
Storage Comment:	Store at -20°C. Avoid freeze / thaw cycles.



Immunofluorescence

Image 1. Immunofluorescence analysis of C6 cells using EPH antibody (ABIN6132064, ABIN6140215, ABIN6140216 and ABIN6224369) at dilution of 1:100. Blue: DAPI for nuclear staining.



Western Blotting

Image 2. Western blot analysis of extracts of various cell lines, using EPH antibody (ABIN6132064, ABIN6140215, ABIN6140216 and ABIN6224369) at 1:1000 dilution. Secondary antibody: HRP Goat Anti-Rabbit IgG (H+L) (ABIN1684268 and ABIN3020597) at 1:10000 dilution. Lysates/proteins: 25 µg per lane. Blocking buffer: 3 % nonfat dry milk in TBST. Detection: ECL Basic Kit (RM00020). Exposure time: 3s.