

Datasheet for ABIN6140236
anti-EPS15 antibody (AA 660-840)



[Go to Product page](#)

4 Images

Overview

Quantity:	100 µL
Target:	EPS15
Binding Specificity:	AA 660-840
Reactivity:	Human
Host:	Rabbit
Clonality:	Polyclonal
Conjugate:	This EPS15 antibody is un-conjugated
Application:	Western Blotting (WB)

Product Details

Immunogen:	Recombinant fusion protein containing a sequence corresponding to amino acids 660-840 of human EPS15 (NP_001972.1).
Sequence:	RQSTDPFATS STDPFSAANN SSITSVETLK HNDPFAPGGT VVAASDSATD PFASVFGNES FGGGFADFST LSKVNNEDPF RSATSSSVSN VVITKNVFEE TSVKSEDEPP ALPPKIGTPT RPCPLPPGKR SINKLDSPDP FKLNDPFQPF PGNDSPKEKD PEIFCDPFTS ATTTTNKEAD P
Isotype:	IgG
Cross-Reactivity:	Human, Mouse
Characteristics:	Polyclonal Antibodies
Purification:	Affinity purification

Target Details

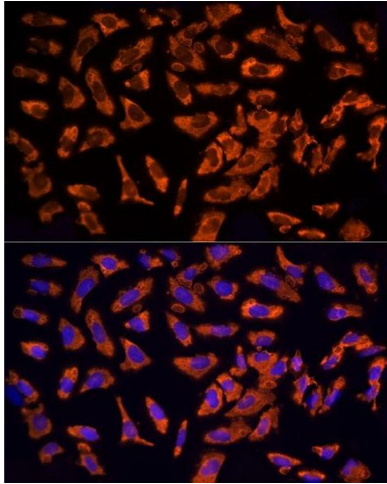
Target:	EPS15
Alternative Name:	EPS15 (EPS15 Products)
Background:	This gene encodes a protein that is part of the EGFR pathway. The protein is present at clatherin-coated pits and is involved in receptor-mediated endocytosis of EGF. Notably, this gene is rearranged with the HRX/ALL/MLL gene in acute myelogenous leukemias. Alternative splicing results in multiple transcript variants encoding distinct isoforms.,EPS15,AF-1P,AF1P,MLLT5,Signal Transduction,EPS15
Molecular Weight:	64 kDa/98 kDa
Gene ID:	2060
UniProt:	P42566
Pathways:	EGFR Signaling Pathway , Regulation of Muscle Cell Differentiation , Skeletal Muscle Fiber Development , EGFR Downregulation

Application Details

Application Notes:	WB,1:500 - 1:2000
Comment:	HIGH QUALITY
Restrictions:	For Research Use only

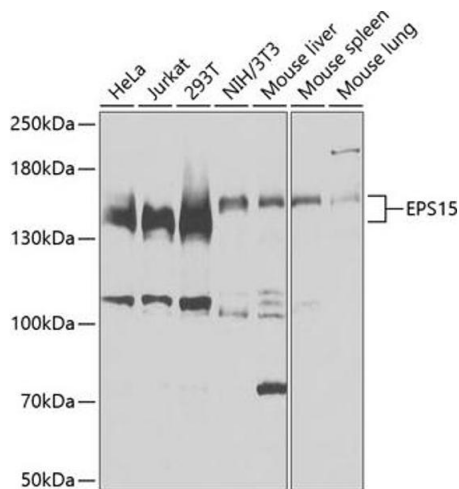
Handling

Format:	Liquid
Buffer:	PBS with 0.02 % sodium azide,50 % glycerol, pH 7.3.
Preservative:	Sodium azide
Precaution of Use:	This product contains Sodium azide: a POISONOUS AND HAZARDOUS SUBSTANCE which should be handled by trained staff only.
Storage:	-20 °C
Storage Comment:	Store at -20°C. Avoid freeze / thaw cycles.



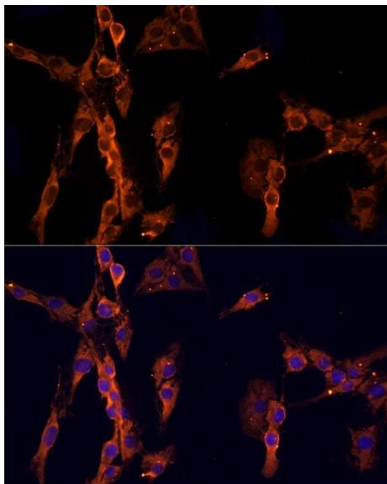
Immunofluorescence

Image 1. Immunofluorescence analysis of U2OS cells using EPS15 Rabbit pAb at dilution of 1:200 (40x lens). Blue: DAPI for nuclear staining.



Western Blotting

Image 2. Western blot analysis of extracts of various cell lines, using EPS15 antibody at 1:3000 dilution. Secondary antibody: HRP Goat Anti-Rabbit IgG (H+L) (ABIN1684268 and ABIN3020597) at 1:10000 dilution. Lysates/proteins: 25 µg per lane. Blocking buffer: 3% nonfat dry milk in TBST. Detection: ECL Basic Kit (RM00020). Exposure time: 15s.



Immunofluorescence

Image 3. Immunofluorescence analysis of C6 cells using EPS15 Rabbit pAb at dilution of 1:200 (40x lens). Blue: DAPI for nuclear staining.

Please check the [product details page](#) for more images. Overall 4 images are available for ABIN6140236.