

Datasheet for ABIN6140246
anti-ERAP2 antibody (AA 1-170)



[Go to Product page](#)

1 Image

Overview

Quantity:	100 µL
Target:	ERAP2
Binding Specificity:	AA 1-170
Reactivity:	Human
Host:	Rabbit
Clonality:	Polyclonal
Conjugate:	This ERAP2 antibody is un-conjugated
Application:	Western Blotting (WB)

Product Details

Immunogen:	Recombinant fusion protein containing a sequence corresponding to amino acids 1-170 of human ERAP2 (NP_071745.1).
Sequence:	MFHSSAMVNS HRKPMFNIHR GFYCLTAILP QICICSQFSV PSSYHFTEDP GAFFPVATNGE RFPWQELRLP SVVIPLHYDL FVHPNLTSLD FVASEKIEVL VSNATQFIIL HSKDLEITNA TLQSEEDSRY MKPGKELKVL SYPAHEQIAL LVPEKLTPHL KYYVAMDFQA
Isotype:	IgG
Cross-Reactivity:	Human
Characteristics:	Polyclonal Antibodies
Purification:	Affinity purification

Target Details

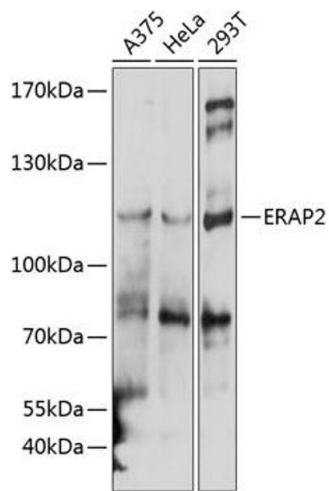
Target:	ERAP2
Alternative Name:	ERAP2 (ERAP2 Products)
Background:	This gene encodes a zinc metalloaminopeptidase of the M1 protease family that resides in the endoplasmic reticulum and functions in N-terminal trimming antigenic epitopes for presentation by major histocompatibility complex (MHC) class I molecules. Certain mutations in this gene are associated with the inflammatory arthritis syndrome ankylosing spondylitis and pre-eclampsia. This gene is located adjacent to a closely related aminopeptidase gene on chromosome 5. [provided by RefSeq, Jul 2016],ERAP2,L-RAP,LRAP,Cell Biology & Developmental Biology,Ubiquitin,Immunology & Inflammation,ERAP2
Molecular Weight:	40 kDa/60 kDa/105 kDa/110 kDa
Gene ID:	64167
UniProt:	Q6P179

Application Details

Application Notes:	WB,1:500 - 1:2000
Restrictions:	For Research Use only

Handling

Format:	Liquid
Buffer:	PBS with 0.02 % sodium azide,50 % glycerol, pH 7.3.
Preservative:	Sodium azide
Precaution of Use:	This product contains Sodium azide: a POISONOUS AND HAZARDOUS SUBSTANCE which should be handled by trained staff only.
Storage:	-20 °C
Storage Comment:	Store at -20°C. Avoid freeze / thaw cycles.



Western Blotting

Image 1. Western blot analysis of extracts of various cell lines, using ER antibody at 1:1000 dilution. Secondary antibody: HRP Goat Anti-Rabbit IgG (H+L) (ABIN1684268 and ABIN3020597) at 1:10000 dilution. Lysates/proteins: 25 µg per lane. Blocking buffer: 3% nonfat dry milk in TBST. Detection: ECL Basic Kit (RM00020). Exposure time: 5s.