



[Go to Product page](#)

Datasheet for ABIN6140284
anti-ERH antibody (AA 1-104)

1 Image

Overview

Quantity:	100 µL
Target:	ERH
Binding Specificity:	AA 1-104
Reactivity:	Human
Host:	Rabbit
Clonality:	Polyclonal
Conjugate:	This ERH antibody is un-conjugated
Application:	Western Blotting (WB)

Product Details

Immunogen:	Recombinant fusion protein containing a sequence corresponding to amino acids 1-104 of human ERH (NP_004441.1).
Sequence:	MSHTILLVQP TKRPEGRTYA DYESVNECME GVCKMYEEHL KRMNPNPSPI TYDISQLFDF IDDLADLSCL VYRADTQTYQ PYNKDWIKEK IYVLLRRQAQ QAGK
Isotype:	IgG
Cross-Reactivity:	Human
Characteristics:	Polyclonal Antibodies
Purification:	Affinity purification

Target Details

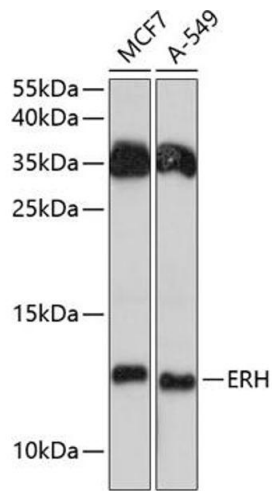
Target:	ERH
Alternative Name:	ERH (ERH Products)
Background:	May have a role in the cell cycle.,ERH,DROER,Epigenetics & Nuclear Signaling,ERH
Molecular Weight:	12 kDa
Gene ID:	2079
UniProt:	P84090

Application Details

Application Notes:	WB,1:500 - 1:2000
Comment:	HIGH QUALITY
Restrictions:	For Research Use only

Handling

Format:	Liquid
Buffer:	PBS with 0.02 % sodium azide,50 % glycerol, pH 7.3.
Preservative:	Sodium azide
Precaution of Use:	This product contains Sodium azide: a POISONOUS AND HAZARDOUS SUBSTANCE which should be handled by trained staff only.
Storage:	-20 °C
Storage Comment:	Store at -20°C. Avoid freeze / thaw cycles.



Western Blotting

Image 1. Western blot analysis of extracts of various cell lines, using ERH antibody (ABIN6133507, ABIN6140284, ABIN6140286 and ABIN6215884) at 1:3000 dilution. Secondary antibody: HRP Goat Anti-Rabbit IgG (H+L) (ABIN1684268 and ABIN3020597) at 1:10000 dilution. Lysates/proteins: 25 µg per lane. Blocking buffer: 3 % nonfat dry milk in TBST. Detection: ECL Basic Kit (RM00020). Exposure time: 90s.