

Datasheet for ABIN6140313
anti-ETF1 antibody (AA 278-437)



[Go to Product page](#)

2 Images

Overview

| | |
|----------------------|--|
| Quantity: | 100 µL |
| Target: | ETF1 |
| Binding Specificity: | AA 278-437 |
| Reactivity: | Human |
| Host: | Rabbit |
| Clonality: | Polyclonal |
| Conjugate: | This ETF1 antibody is un-conjugated |
| Application: | Western Blotting (WB), Immunofluorescence (IF) |

Product Details

| | |
|-------------------|---|
| Immunogen: | Recombinant fusion protein containing a sequence corresponding to amino acids 278-437 of human ETF1 (NP_004721.1). |
| Sequence: | VKFIQEKKLI GRYFDEISQD TGKYCFGVED TLKALEMGAV EILIVYENLD IMRYVLHCQG TEEEKILYLT PEQEKDKSHF TDKETGQEHE LIESMPLLEW FANNYKKFGA TLEIVTDKSQ EGSQFVKGFG GIGGILRYRV DFQGMFYQGG DDEFFDLDDY |
| Isotype: | IgG |
| Cross-Reactivity: | Human, Mouse, Rat |
| Characteristics: | Polyclonal Antibodies |
| Purification: | Affinity purification |

Target Details

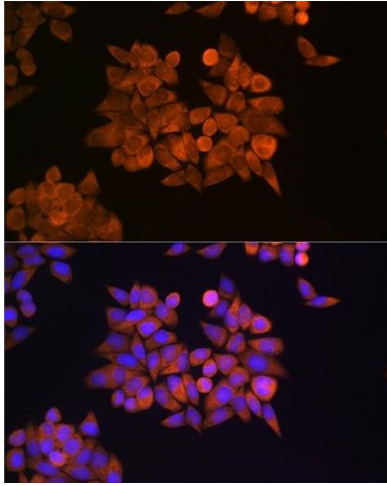
| | |
|-------------------|--|
| Target: | ETF1 |
| Alternative Name: | ETF1 (ETF1 Products) |
| Background: | This gene encodes a class-1 polypeptide chain release factor. The encoded protein plays an essential role in directing termination of mRNA translation from the termination codons UAA, UAG and UGA. This protein is a component of the SURF complex which promotes degradation of prematurely terminated mRNAs via the mechanism of nonsense-mediated mRNA decay (NMD). Alternate splicing results in multiple transcript variants. Pseudogenes of this gene are found on chromosomes 6, 7, and X.,ETF1,D5S1995,ERF,ERF1,RF1,SUP45L1,TB3-1,Epigenetics & Nuclear Signaling,RNA Binding,ETF1 |
| Molecular Weight: | 45 kDa/49 kDa |
| Gene ID: | 2107 |
| UniProt: | P62495 |

Application Details

| | |
|--------------------|-----------------------------------|
| Application Notes: | WB,1:200 - 1:2000,IF,1:50 - 1:200 |
| Comment: | HIGH QUALITY |
| Restrictions: | For Research Use only |

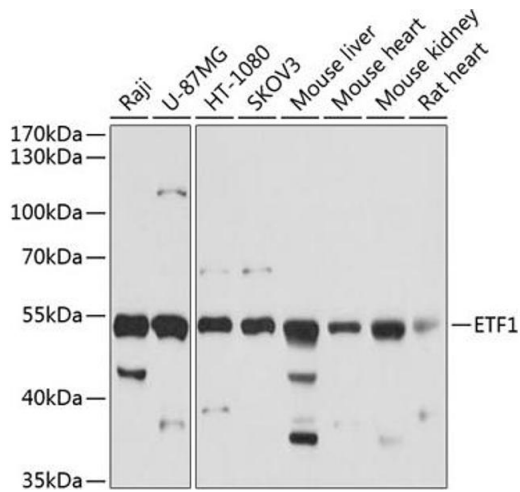
Handling

| | |
|--------------------|--|
| Format: | Liquid |
| Buffer: | PBS with 0.02 % sodium azide,50 % glycerol, pH 7.3. |
| Preservative: | Sodium azide |
| Precaution of Use: | This product contains Sodium azide: a POISONOUS AND HAZARDOUS SUBSTANCE which should be handled by trained staff only. |
| Storage: | -20 °C |
| Storage Comment: | Store at -20°C. Avoid freeze / thaw cycles. |



Immunofluorescence

Image 1. Immunofluorescence analysis of HeLa cells using ETF1 Rabbit pAb (ABIN6129660, ABIN6140313, ABIN6140314 and ABIN6221622) at dilution of 1:100 (40x lens). Blue: DAPI for nuclear staining.



Western Blotting

Image 2. Western blot analysis of extracts of various cell lines, using ETF1 antibody (ABIN6129660, ABIN6140313, ABIN6140314 and ABIN6221622) at 1:1000 dilution. Secondary antibody: HRP Goat Anti-Rabbit IgG (H+L) (ABIN1684268 and ABIN3020597) at 1:10000 dilution. Lysates/proteins: 25 µg per lane. Blocking buffer: 3 % nonfat dry milk in TBST. Detection: ECL Basic Kit (RM00020). Exposure time: 3s.