

Datasheet for ABIN6140315
anti-ETFA antibody (AA 1-333)



[Go to Product page](#)

7 Images

Overview

Quantity:	100 µL
Target:	ETFA
Binding Specificity:	AA 1-333
Reactivity:	Human
Host:	Rabbit
Clonality:	Polyclonal
Conjugate:	This ETFA antibody is un-conjugated
Application:	Western Blotting (WB), Immunohistochemistry (IHC), Immunoprecipitation (IP)

Product Details

Immunogen:	Recombinant fusion protein containing a sequence corresponding to amino acids 1-333 of human ETFA (NP_000117.1).
Sequence:	MFRAAAPGQL RRAASLLRFQ STLVIAEHAN DSLAPITLNT ITAATRLGGE VSCLVAGTKC DKVAQDLCKV AGIAKVLVAQ HDVYKGLLPE ELTPLILATQ KQFNythica GASAFGKNLL PRVAAKLEVA PISDIIAIKS PDTFVRTIYA GNALCTVKCD EKVKVFSVRG TSFDAAATSG GSASSEKASS TSPVEISEWL DQKLTKSDRP ELTGAKVVVS GGRGLKSGEN FKLLYDLADQ LHAAVGASRA AVDAGFVPND MQVGQTGKIV APELYIAVGI SGAIQHLAGM KDSKTIVAIN KDPEAPIFQV ADYGIVADLF KVPPEMTEIL KKK
Isotype:	IgG
Cross-Reactivity:	Human, Mouse, Rat
Characteristics:	Polyclonal Antibodies

Product Details

Purification: Affinity purification

Target Details

Target: ETFA

Alternative Name: ETFA ([ETFAs Products](#))

Background: ETFA participates in catalyzing the initial step of the mitochondrial fatty acid beta-oxidation. It shuttles electrons between primary flavoprotein dehydrogenases and the membrane-bound electron transfer flavoprotein ubiquinone oxidoreductase. Defects in electron-transfer-flavoprotein have been implicated in type II glutaricaciduria in which multiple acyl-CoA dehydrogenase deficiencies result in large excretion of glutaric, lactic, ethylmalonic, butyric, isobutyric, 2-methyl-butyric, and isovaleric acids. Two transcript variants encoding different isoforms have been found for this gene.,ETFAs,EMA,GA2,MADD,Cancer,Signal Transduction,Endocrine & Metabolism,Mitochondrial metabolism,Mitochondrial markers,ETFAs

Molecular Weight: 30 kDa/35 kDa

Gene ID: 2108

UniProt: [P13804](#)

Pathways: [SARS-CoV-2 Protein Interactome](#)

Application Details

Application Notes: WB,1:500 - 1:2000,IHC,1:50 - 1:200,IP,1:50 - 1:200

Comment: HIGH QUALITY

Restrictions: For Research Use only

Handling

Format: Liquid

Buffer: PBS with 0.02 % sodium azide,50 % glycerol, pH 7.3.

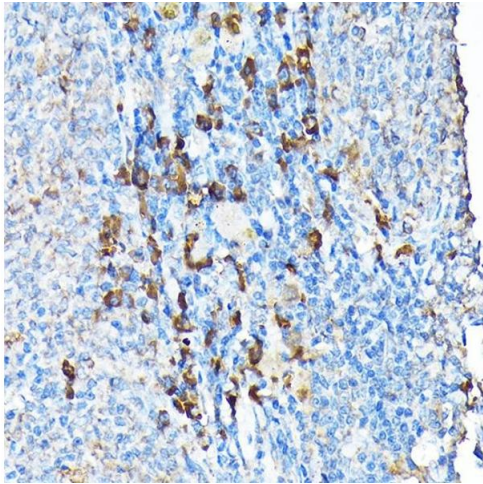
Preservative: Sodium azide

Precaution of Use: This product contains Sodium azide: a POISONOUS AND HAZARDOUS SUBSTANCE which should be handled by trained staff only.

Storage: -20 °C

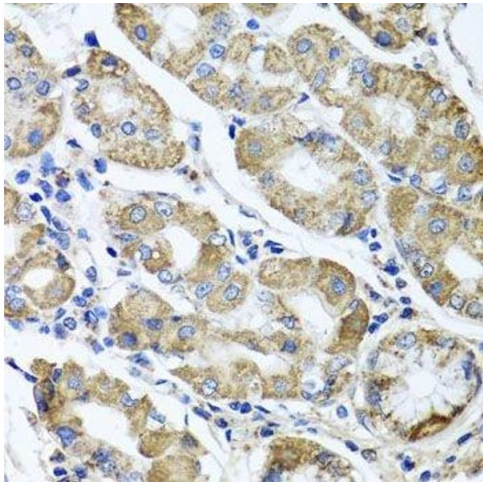
Storage Comment: Store at -20°C. Avoid freeze / thaw cycles.

Images



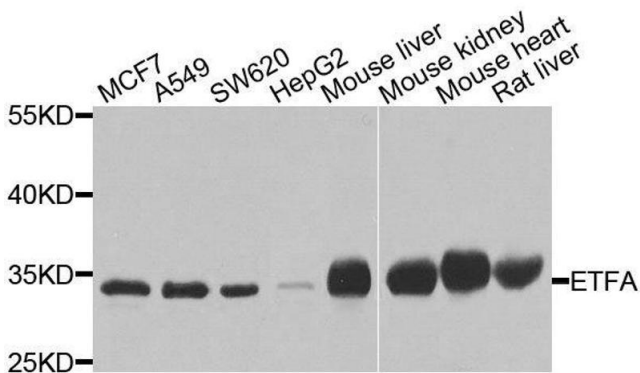
Immunohistochemistry

Image 1. Immunohistochemistry of paraffin-embedded mouse spleen using ETFA Rabbit pAb at dilution of 1:200 (40x lens). Perform high pressure antigen retrieval with 10 mM citrate buffer pH 6.0 before commencing with IHC staining protocol.



Immunohistochemistry (Paraffin-embedded Sections)

Image 2. Immunohistochemistry of paraffin-embedded human stomach using ETFA antibody.



Western Blotting

Image 3. Western blot analysis of extracts of various cell lines, using ETFA antibody.

Please check the [product details page](#) for more images. Overall 7 images are available for ABIN6140315.