

Datasheet for ABIN6140372  
**anti-EXOSC1 antibody (AA 1-195)**



[Go to Product page](#)

1 Image

## Overview

Quantity:	100 µL
Target:	EXOSC1
Binding Specificity:	AA 1-195
Reactivity:	Human
Host:	Rabbit
Clonality:	Polyclonal
Conjugate:	This EXOSC1 antibody is un-conjugated
Application:	Western Blotting (WB)

## Product Details

Immunogen:	Recombinant fusion protein containing a sequence corresponding to amino acids 1-195 of human EXOSC1 (NP_057130.1).
Sequence:	MAPPVRYCIP GERLCNLEEG SPGSGTYTRH GYIFSSLAGC LMKSSENGAL PVSVVRETE SQLLPDVGAI VTCKVSSINS RFAKVHILYV GSMPLKNSFR GTIRKEDVRA TEKDKVEIYK SFRPGDIVLA KVISLGDAQS NYLLTTAENE LGVVVAHSES GIQMPISWC EMQCPKTHTK EFRKVARVQP EFLQT
Isotype:	IgG
Cross-Reactivity:	Human
Characteristics:	Polyclonal Antibodies
Purification:	Affinity purification

## Target Details

---

Target:	EXOSC1
Alternative Name:	EXOSC1 ( <a href="#">EXOSC1 Products</a> )
Background:	This gene encodes a core component of the exosome. The mammalian exosome is required for rapid degradation of AU rich element-containing RNAs but not for poly(A) shortening. The association of this protein with the exosome is mediated by protein-protein interactions with ribosomal RNA-processing protein 42 and ribosomal RNA-processing protein 46. Alternative splicing of this gene results in multiple transcript variants.,EXOSC1,CGI-108,CSL4,Csl4p,SKI4,Ski4p,p13,Epigenetics & Nuclear Signaling,EXOSC1
Molecular Weight:	21 kDa
Gene ID:	51013
UniProt:	<a href="#">Q9Y3B2</a>

## Application Details

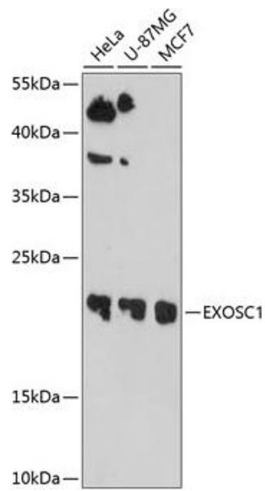
---

Application Notes:	WB,1:500 - 1:2000
Comment:	HIGH QUALITY
Restrictions:	For Research Use only

## Handling

---

Format:	Liquid
Buffer:	PBS with 0.02 % sodium azide,50 % glycerol, pH 7.3.
Preservative:	Sodium azide
Precaution of Use:	This product contains Sodium azide: a POISONOUS AND HAZARDOUS SUBSTANCE which should be handled by trained staff only.
Storage:	-20 °C
Storage Comment:	Store at -20°C. Avoid freeze / thaw cycles.



### Western Blotting

**Image 1.** Western blot analysis of extracts of various cell lines, using EXOSC1 antibody at 1:1000 dilution. Secondary antibody: HRP Goat Anti-Rabbit IgG (H+L) (ABIN1684268 and ABIN3020597) at 1:10000 dilution. Lysates/proteins: 25 µg per lane. Blocking buffer: 3% nonfat dry milk in TBST. Detection: ECL Basic Kit (RM00020). Exposure time: 90s.