

Datasheet for ABIN6140408  
**anti-F2RL3 antibody (AA 20-150)**[Go to Product page](#)

## 1 Image

## Overview

Quantity:	100 µL
Target:	F2RL3
Binding Specificity:	AA 20-150
Reactivity:	Human
Host:	Rabbit
Clonality:	Polyclonal
Conjugate:	This F2RL3 antibody is un-conjugated
Application:	Western Blotting (WB)

## Product Details

Immunogen:	Recombinant fusion protein containing a sequence corresponding to amino acids 20-150 of human F2RL3 (NP_003941.2).
Sequence:	TQTPSVYDES GSTGGGDDST PSILPAPRGY PGQVCANDSD TLELPDSSRA LLLGWVPTRL VPALYGLVLV VGLPANGLAL WVLATQAPRL PSTMLLMNLA AADLLLALAL PPRIAYHLRG QRWPFGEAAC R
Isotype:	IgG
Cross-Reactivity:	Human, Mouse, Rat
Characteristics:	Polyclonal Antibodies
Purification:	Affinity purification

## Target Details

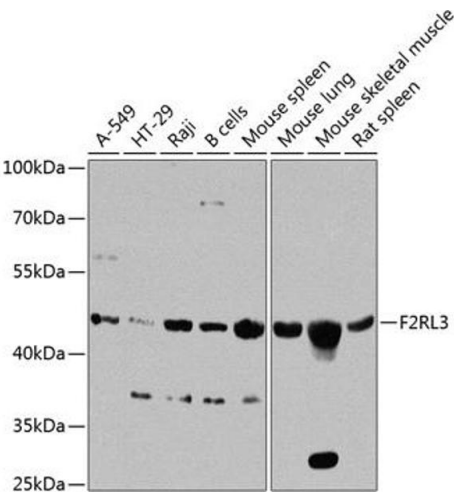
Target:	F2RL3
Alternative Name:	F2RL3 ( <a href="#">F2RL3 Products</a> )
Background:	Coagulation factor II (thrombin) receptor-like 3 (F2RL3) is a member of the large family of 7-transmembrane-region receptors that couple to guanosine-nucleotide-binding proteins. F2RL3 is also a member of the protease-activated receptor family. F2RL3 is activated by proteolytic cleavage of its extracellular amino terminus. The new amino terminus functions as a tethered ligand and activates the receptor. F2RL3 is activated by thrombin and trypsin.,F2RL3,PAR4,Signal Transduction,G protein signaling,G-Protein-Coupled Receptors(GPCR),F2RL3
Molecular Weight:	41 kDa
Gene ID:	9002
UniProt:	<a href="#">Q96RI0</a>
Pathways:	<a href="#">Carbohydrate Homeostasis</a> , <a href="#">Regulation of Carbohydrate Metabolic Process</a>

## Application Details

Application Notes:	WB,1:500 - 1:2000
Comment:	HIGH QUALITY
Restrictions:	For Research Use only

## Handling

Format:	Liquid
Buffer:	PBS with 0.02 % sodium azide,50 % glycerol, pH 7.3.
Preservative:	Sodium azide
Precaution of Use:	This product contains Sodium azide: a POISONOUS AND HAZARDOUS SUBSTANCE which should be handled by trained staff only.
Storage:	-20 °C
Storage Comment:	Store at -20°C. Avoid freeze / thaw cycles.



### Western Blotting

**Image 1.** Western blot analysis of extracts of various cell lines, using F2RL3 antibody (ABIN6133491, ABIN6140408, ABIN6140409 and ABIN6224543) at 1:1000 dilution. Secondary antibody: HRP Goat Anti-Rabbit IgG (H+L) (ABIN1684268 and ABIN3020597) at 1:10000 dilution. Lysates/proteins: 25 µg per lane. Blocking buffer: 3 % nonfat dry milk in TBST. Detection: ECL Basic Kit (RM00020). Exposure time: 90s.