

Datasheet for ABIN6140490

anti-FASTKD1 antibody (AA 638-847)

3 Images

[Go to Product page](#)

Overview

Quantity:	100 µL
Target:	FASTKD1
Binding Specificity:	AA 638-847
Reactivity:	Human
Host:	Rabbit
Clonality:	Polyclonal
Conjugate:	This FASTKD1 antibody is un-conjugated
Application:	Western Blotting (WB)

Product Details

Immunogen:	Recombinant fusion protein containing a sequence corresponding to amino acids 638-847 of human FASTKD1 (NP_078898.3).
Sequence:	KFLARLDSQL EILSPRSAR VQFHLMELNR SVCLECPEFQ IPWFHDRFCQ QYNKGIGGMD GTQQQIFKML AEVLGGINCV KASVLTPYYH KVDFECILDK RKKPLPYGSH NIALGQLPEM PWESNIEIVG SRLPPGAERI ALEFLDSKAL CRNIPHMKGK SAMKKRHLEI LGYRVIQISQ FEWNSMALST KDARMDYLRE CIFGEVKSC
Isotype:	IgG
Cross-Reactivity:	Human, Mouse, Rat
Characteristics:	Polyclonal Antibodies
Purification:	Affinity purification

Target Details

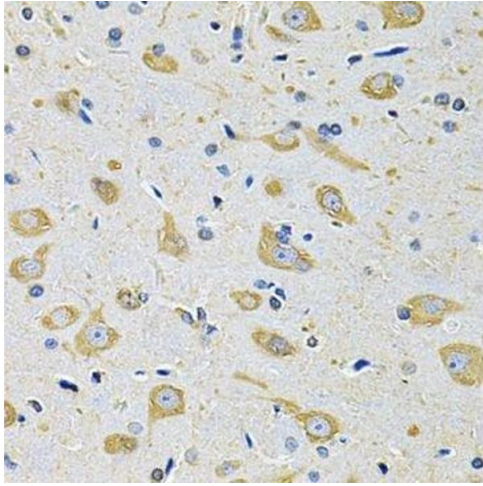
Target:	FASTKD1
Alternative Name:	FASTKD1 (FASTKD1 Products)
Background:	Involved in the down-regulation of mitochondrial MT-ND3 mRNA levels which leads to decreased respiratory complex I abundance and activity.,FASTKD1,Epigenetics & Nuclear Signaling,RNA Binding,Signal Transduction,Kinase,Cell Biology & Developmental Biology,Apoptosis,FASTKD1
Molecular Weight:	92 kDa/97 kDa
Gene ID:	79675
UniProt:	Q53R41

Application Details

Application Notes:	WB,1:500 - 1:2000
Comment:	HIGH QUALITY
Restrictions:	For Research Use only

Handling

Format:	Liquid
Buffer:	PBS with 0.02 % sodium azide,50 % glycerol, pH 7.3.
Preservative:	Sodium azide
Precaution of Use:	This product contains Sodium azide: a POISONOUS AND HAZARDOUS SUBSTANCE which should be handled by trained staff only.
Storage:	-20 °C
Storage Comment:	Store at -20°C. Avoid freeze / thaw cycles.

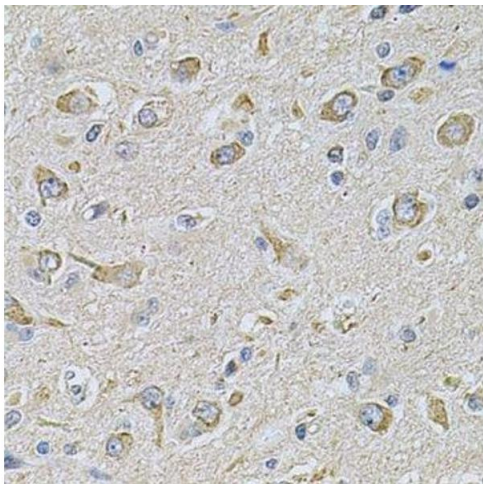
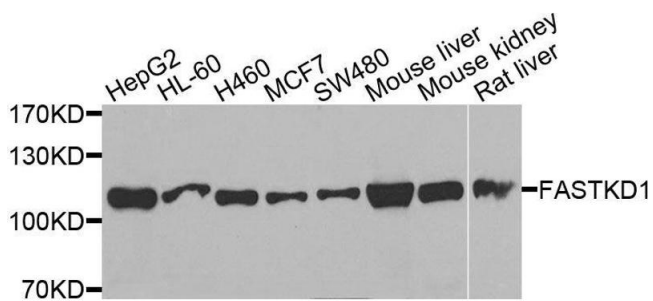


Immunohistochemistry (Paraffin-embedded Sections)

Image 1. Immunohistochemistry of paraffin-embedded mouse brain using FASTKD1 Antibody.

Western Blotting

Image 2. Western blot analysis of extracts of various cell lines, using FASTKD1 antibody.



Immunohistochemistry (Paraffin-embedded Sections)

Image 3. Immunohistochemistry of paraffin-embedded rat brain using FASTKD1 Antibody.