

Datasheet for ABIN6140504
anti-FBP2 antibody (AA 1-339)



[Go to Product page](#)

3 Images

Overview

Quantity:	100 µL
Target:	FBP2
Binding Specificity:	AA 1-339
Reactivity:	Human
Host:	Rabbit
Clonality:	Polyclonal
Conjugate:	This FBP2 antibody is un-conjugated
Application:	Western Blotting (WB), Immunofluorescence (IF)

Product Details

Immunogen:	Recombinant fusion protein containing a sequence corresponding to amino acids 1-339 of human FBP2 (NP_003828.2).
Sequence:	MTDRSPFETD MLTLTRYVME KGRQAKGTGE LTQLLNSMLT AIKAISSAVR KAGLAHLYGI AGSVNVTGDE VKKLDVLSNS LVINMVQSSY STCVLVSEEN KDAITAKEK RGKYVVCFDP LDGSSNIDCL ASIGTIFAIY RKTSEDEPSE KDALQCGRNI VAAGYALYGS ATLVALSTGQ GVDLFMLDPA LGEFVLVEKD VKIKKKGKIY SLNEGYAKYF DAATTEYVQK KKFPEGGSAP YGARYVGS MV ADVHRTL VYG GIFLYPANQK SPKGKLRLLY ECNPVAYIIE QAGGLATTGT QPVLVDKPEA IHQRVPLILG SPEDVQEYLT CVQKNQAGS
Isotype:	IgG
Cross-Reactivity:	Mouse, Rat
Characteristics:	Polyclonal Antibodies

Product Details

Purification: Affinity purification

Target Details

Target: FBP2

Alternative Name: FBP2 ([FBP2 Products](#))

Background: This gene encodes a gluconeogenesis regulatory enzyme which catalyzes the hydrolysis of fructose 1,6-bisphosphate to fructose 6-phosphate and inorganic phosphate.,FBP2,Cancer,Signal Transduction,Endocrine & Metabolism,Carbohydrate metabolism,FBP2

Molecular Weight: 36 kDa

Gene ID: 8789

UniProt: [O00757](#)

Application Details

Application Notes: WB,1:500 - 1:2000,IF,1:50 - 1:200

Comment: HIGH QUALITY

Restrictions: For Research Use only

Handling

Format: Liquid

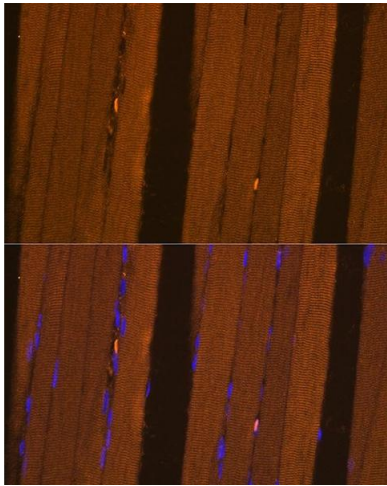
Buffer: PBS with 0.02 % sodium azide,50 % glycerol, pH 7.3.

Preservative: Sodium azide

Precaution of Use: This product contains Sodium azide: a POISONOUS AND HAZARDOUS SUBSTANCE which should be handled by trained staff only.

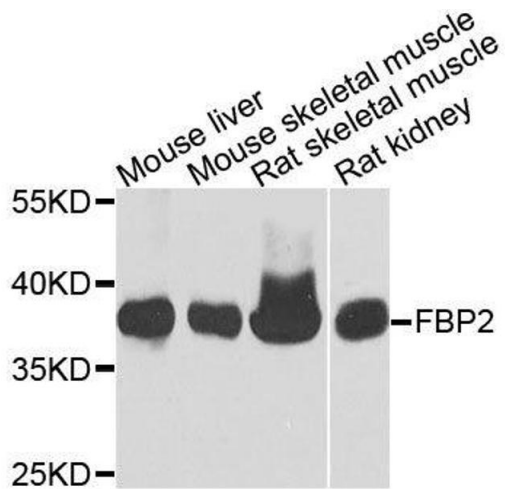
Storage: -20 °C

Storage Comment: Store at -20°C. Avoid freeze / thaw cycles.



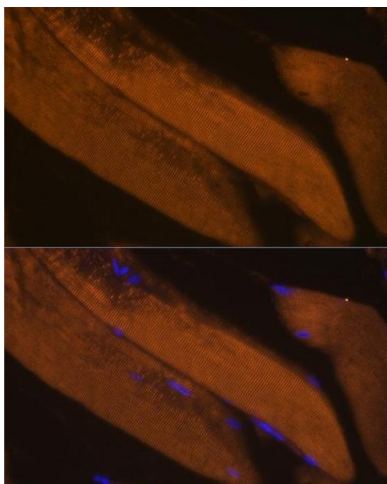
Immunofluorescence

Image 1. Immunofluorescence analysis of Rat skeletal muscle using FBP2 antibody at dilution of 1:100. Blue: DAPI for nuclear staining.



Western Blotting

Image 2. Western blot analysis of extracts of various cell lines, using FBP2 antibody.



Immunofluorescence

Image 3. Immunofluorescence analysis of Mouse skeletal muscle using FBP2 antibody at dilution of 1:100. Blue: DAPI for nuclear staining.