

Datasheet for ABIN6140542
anti-FCGR2B antibody (AA 241-310)



[Go to Product page](#)

1 Image

Overview

Quantity:	100 µL
Target:	FCGR2B
Binding Specificity:	AA 241-310
Reactivity:	Human
Host:	Rabbit
Clonality:	Polyclonal
Conjugate:	This FCGR2B antibody is un-conjugated
Application:	Western Blotting (WB)

Product Details

Immunogen:	Recombinant fusion protein containing a sequence corresponding to amino acids 241-310 of human FCGR2B (NP_003992.3).
Sequence:	VVALIYCRKK RISALPGYPE CREMGETLPE KPANPTNPDE ADKVG AENTI TYSLLMHPDA LEEPDDQNRI
Isotype:	IgG
Cross-Reactivity:	Human
Characteristics:	Polyclonal Antibodies
Purification:	Affinity purification

Target Details

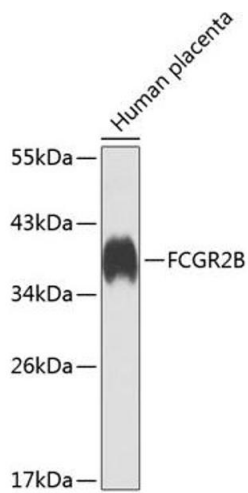
Target:	FCGR2B
Alternative Name:	FCGR2B (FCGR2B Products)
Background:	<p>The protein encoded by this gene is a low affinity receptor for the Fc region of immunoglobulin gamma complexes. The encoded protein is involved in the phagocytosis of immune complexes and in the regulation of antibody production by B-cells. Variations in this gene may increase susceptibility to systemic lupus erythematosus (SLE). Several transcript variants encoding different isoforms have been found for this gene.,FCGR2B,CD32,CD32B,FCG2,FCGR2,IGFR2,Immunology & Inflammation,CD markers,B Cell Receptor Signaling Pathway,Cell Intrinsic Innate Immunity Signaling Pathway,Stem Cells,Hematopoietic Progenitors,FCGR2B</p>
Molecular Weight:	31 kDa/33 kDa/34 kDa
Gene ID:	2213
UniProt:	P31994
Pathways:	Cellular Response to Molecule of Bacterial Origin , Regulation of Leukocyte Mediated Immunity , Production of Molecular Mediator of Immune Response , BCR Signaling

Application Details

Application Notes:	WB,1:500 - 1:2000
Comment:	HIGH QUALITY
Restrictions:	For Research Use only

Handling

Format:	Liquid
Buffer:	PBS with 0.02 % sodium azide,50 % glycerol, pH 7.3.
Preservative:	Sodium azide
Precaution of Use:	This product contains Sodium azide: a POISONOUS AND HAZARDOUS SUBSTANCE which should be handled by trained staff only.
Storage:	-20 °C
Storage Comment:	Store at -20°C. Avoid freeze / thaw cycles.



Western Blotting

Image 1. Western blot analysis of extracts of human placenta, using FCGR2B antibody at 1:1000 dilution. Secondary antibody: HRP Goat Anti-Rabbit IgG (H+L) (ABIN1684268 and ABIN3020597) at 1:10000 dilution. Lysates/proteins: 25 µg per lane. Blocking buffer: 3 % nonfat dry milk in TBST. Detection: ECL Basic Kit (RM00020). Exposure time: 90s.