

Datasheet for ABIN6140580  
**anti-FER antibody (AA 200-450)**



[Go to Product page](#)

1 Image

## Overview

Quantity:	100 µL
Target:	FER
Binding Specificity:	AA 200-450
Reactivity:	Human
Host:	Rabbit
Clonality:	Polyclonal
Conjugate:	This FER antibody is un-conjugated
Application:	Western Blotting (WB)

## Product Details

Immunogen:	Recombinant fusion protein containing a sequence corresponding to amino acids 200-450 of human FER (NP_005237.2).
Sequence:	YDITLPLLLD SLQKMQEEMI KALKGIFDEY SQITSLVTEE IVNVHKEIQM SVEQIDPSTE YNNFIDVHRT TAAKEQEIEF DTSLLEENEN LQANEIMWNN LTAESLQVML KTLAEELMQT QQMLLNKEEA VLELEKRIEE SSETCEKKS D IVLLLSQKQA LEELKQSVQQ LRC TEAKFSA QKELLEQKVQ ENDGKEPPPV VNYEEDAR SV TSMERKERLS KFESIRHSIA GIIRSPKSAL GSSALSDMIS I
Isotype:	IgG
Cross-Reactivity:	Human, Mouse, Rat
Characteristics:	Polyclonal Antibodies
Purification:	Affinity purification

## Target Details

---

Target:	FER
Alternative Name:	FER ( <a href="#">FER Products</a> )
Background:	The protein encoded by this gene is a member of the FPS/FES family of non-transmembrane receptor tyrosine kinases. It regulates cell-cell adhesion and mediates signaling from the cell surface to the cytoskeleton via growth factor receptors. Alternative splicing results in multiple transcript variants. A related pseudogene has been identified on chromosome X.,FER,PPP1R74,TYK3,p94-Fer,Signal Transduction,Kinase,Tyrosine kinases,Cell Biology & Developmental Biology,Cell Cycle,Wnt/ $\beta$ -Catenin Signaling Pathway,FER
Molecular Weight:	51 kDa/74 kDa/94 kDa
Gene ID:	2241
UniProt:	<a href="#">P16591</a>

## Application Details

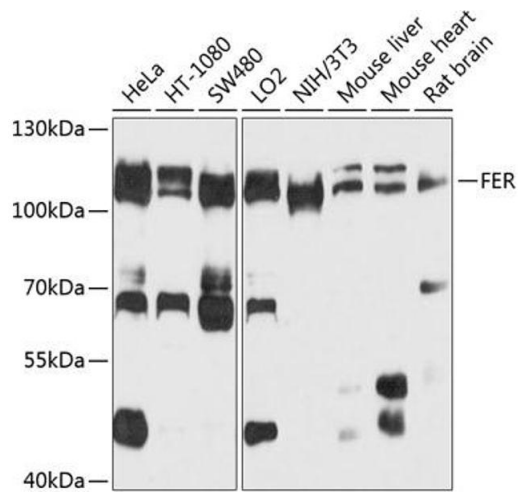
---

Application Notes:	WB,1:500 - 1:2000
Comment:	HIGH QUALITY
Restrictions:	For Research Use only

## Handling

---

Format:	Liquid
Buffer:	PBS with 0.02 % sodium azide,50 % glycerol, pH 7.3.
Preservative:	Sodium azide
Precaution of Use:	This product contains Sodium azide: a POISONOUS AND HAZARDOUS SUBSTANCE which should be handled by trained staff only.
Storage:	-20 °C
Storage Comment:	Store at -20°C. Avoid freeze / thaw cycles.



### Western Blotting

**Image 1.** Western blot analysis of extracts of various cell lines, using FER antibody at 1:1000 dilution. Secondary antibody: HRP Goat Anti-Rabbit IgG (H+L) (ABIN1684268 and ABIN3020597) at 1:10000 dilution. Lysates/proteins: 25 µg per lane. Blocking buffer: 3 % nonfat dry milk in TBST. Detection: ECL Basic Kit (RM00020). Exposure time: 10s.